

N1/2 OF NE1/4 SEC.26, T.18S., R.24E., M.D.B.&M.

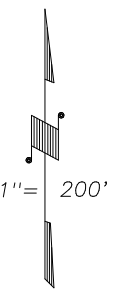
Tax Area Code 077-09

006-123

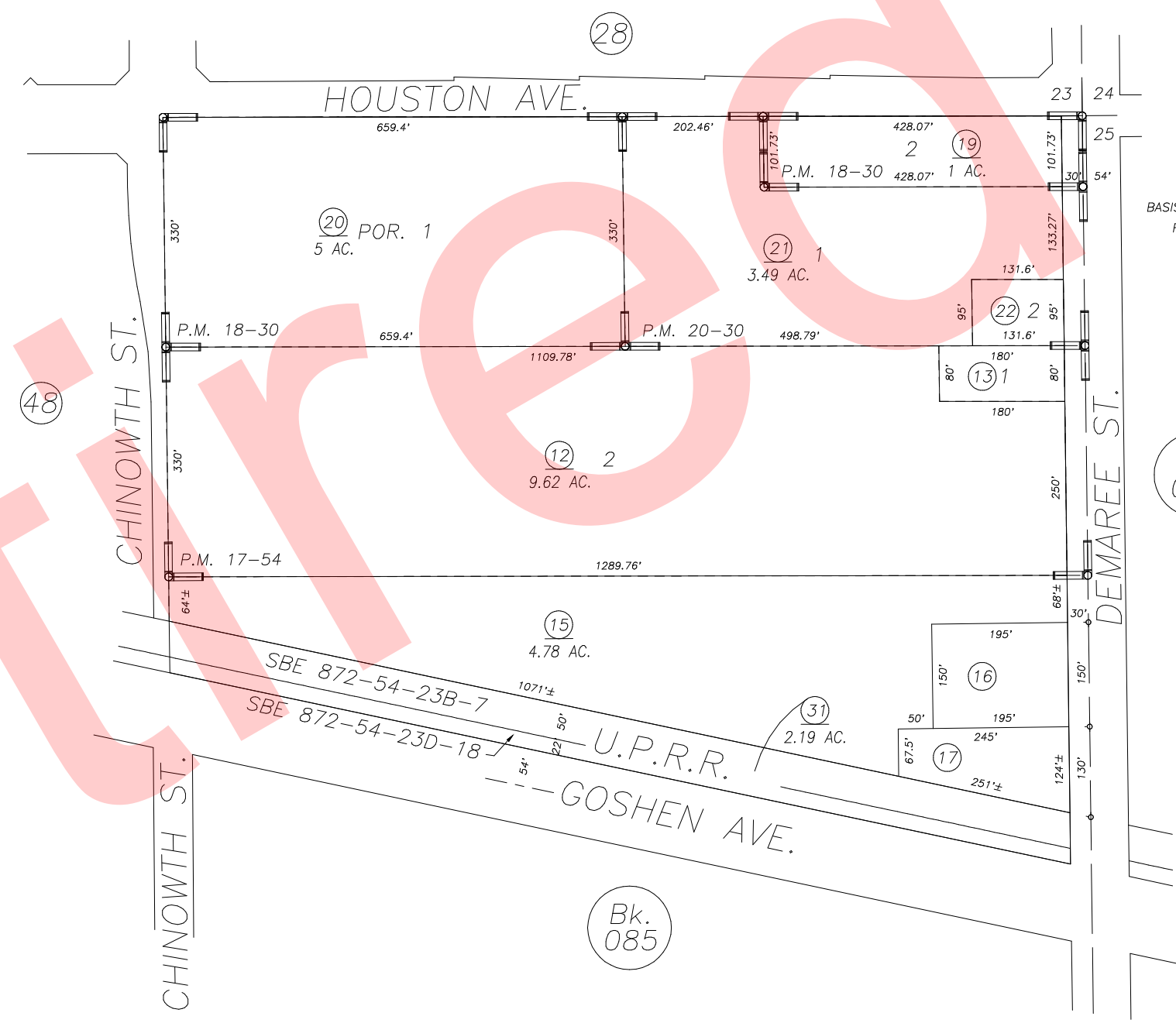
006-200

006-215

**DISCLAIMER**  
THIS MAP WAS PREPARED FOR LOCAL PROPERTY ASSESSMENT PURPOSES ONLY AND THE PARCELS SHOWN HEREON MAY NOT COMPLY WITH STATE AND LOCAL SUBDIVISION ORDINANCES, AND NO LIABILITY IS ASSUMED FOR THE USE OF THE INFORMATION SHOWN HEREON.



BASIS OF BEARINGS:  
R.M. 38-62



PARCEL MAP 1653, P.M. 17-54  
PARCEL MAP 1729, P.M. 18-30  
PARCEL MAP 1929, P.M. 20-30

CITY OF VISALIA  
ASSESSOR'S MAPS BK.077 , PG.09  
COUNTY OF TULARE, CALIFORNIA, U.S.A.

NOTE: Assessor's Parcel Numbers Shown in Circles ① 123  
Assessor's Block Numbers Shown in Ellipses (Bk. 085)

|              |            |      |
|--------------|------------|------|
| 2004-0078479 | 09/29/2004 | JAL  |
| REVISION     | DATE       | TECH |