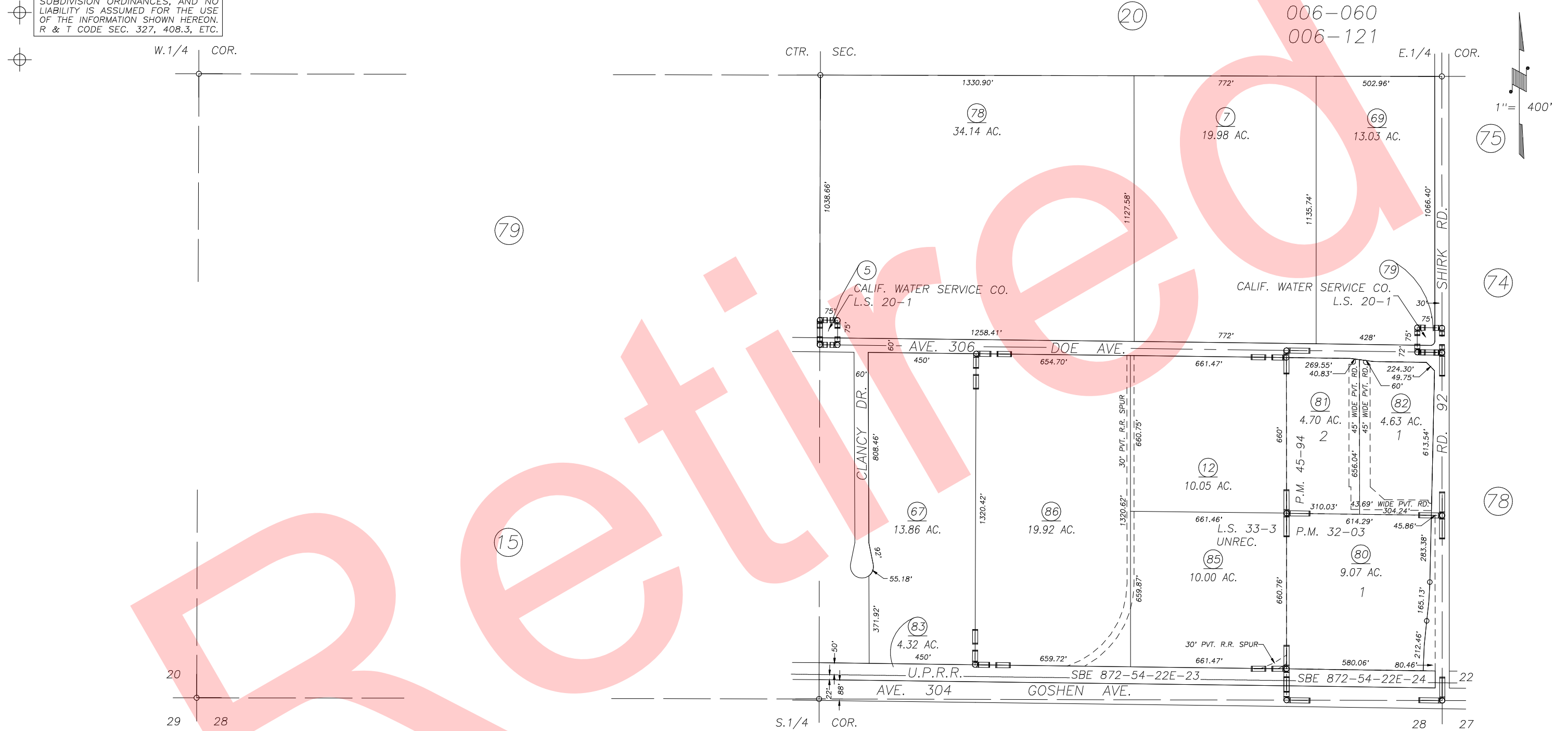


**DISCLAIMER**  
 THIS MAP WAS PREPARED FOR LOCAL PROPERTY ASSESSMENT PURPOSES ONLY AND THE PARCELS SHOWN HEREON MAY NOT COMPLY WITH STATE AND LOCAL SUBDIVISION ORDINANCES, AND NO LIABILITY IS ASSUMED FOR THE USE OF THE INFORMATION SHOWN HEREON. R & T CODE SEC. 327, 408.3, ETC.

S 1/2 SEC. 21, T.18S., R.24E., M.D.B.& M.

Tax Area Code 077-13

006-006  
 006-114  
 006-060  
 006-121



PARCEL MAP 1189, P.M. 12-90  
 PARCEL MAP 2322, P.M. 24-23  
 PARCEL MAP 2808, P.M. 29-09  
 RECORD OF SURVEY, L.S. 20-1  
 PARCEL MAP 3102, P.M. 32-03  
 PARCEL MAP 3103, P.M. 32-04  
 PARCEL MAP 4095, P.M. 41-99

PARCEL MAP 4489, P.M. 45-94  
 RECORD OF SURVEY, L.S. 33-3  
 B.P. POLYMERS INC., (UNREC.)

Bk. 081

CITY OF VISALIA  
 ASSESSOR'S MAPS BK. 077 , PG. 13  
 COUNTY OF TULARE, CALIFORNIA, U.S.A.

NOTE: Assessor's Parcel Numbers Shown in Circles (1) (123) Assessor's Block Numbers Shown in Ellipses

2015-0021134	11/25/2015	ARL
REVISION	DATE	TECH