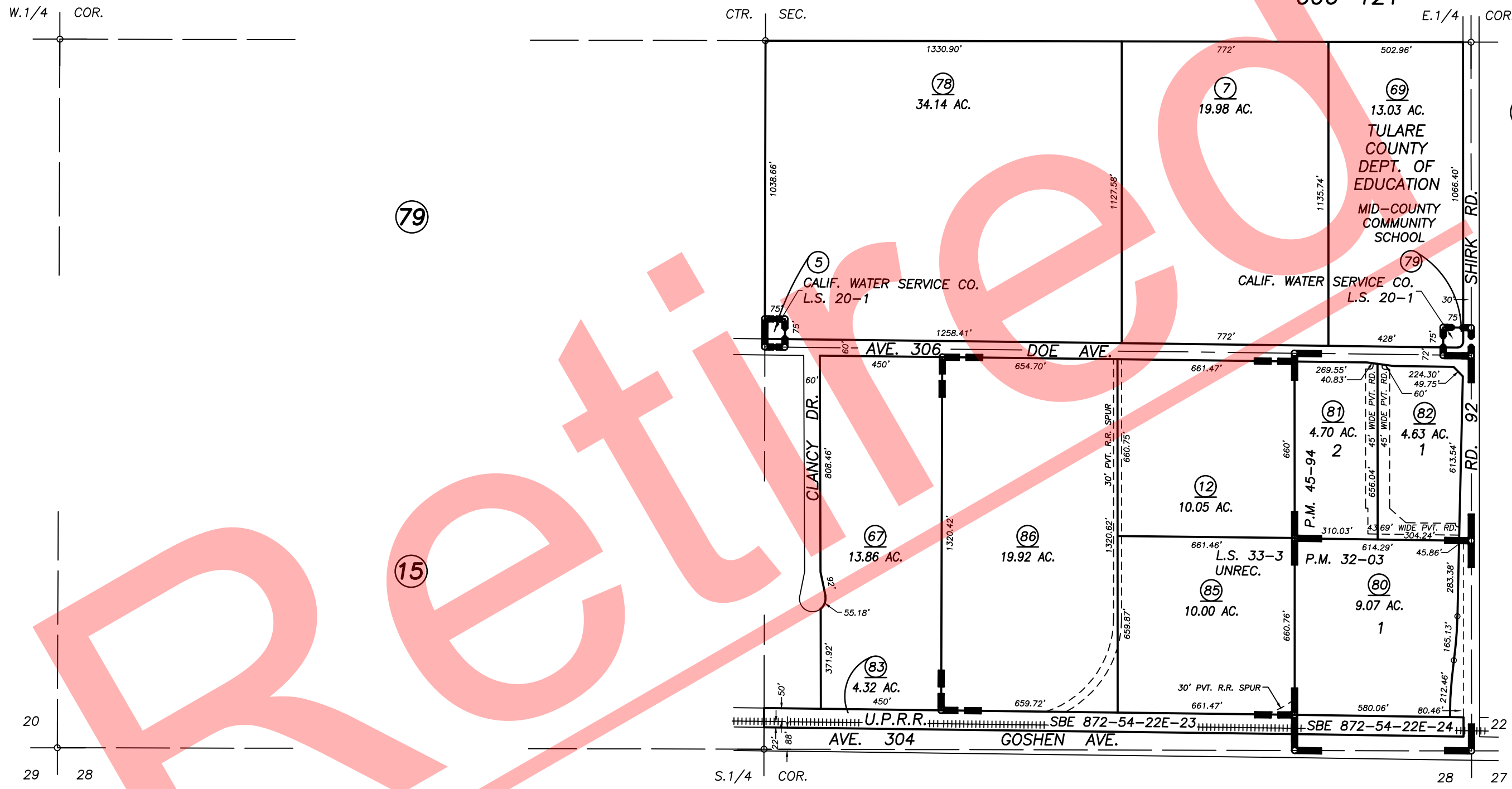
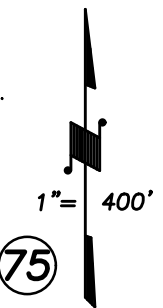
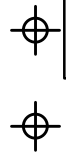


006-006
006-114
006-060
006-121

DISCLAIMER
THIS MAP WAS PREPARED FOR LOCAL PROPERTY ASSESSMENT PURPOSES ONLY AND THE PARCELS SHOWN HEREON MAY NOT COMPLY WITH STATE AND LOCAL SUBDIVISION ORDINANCES, AND NO LIABILITY IS ASSUMED FOR THE USE OF THE INFORMATION SHOWN HEREON. R & T CODE SEC. 327, 40B.3, ETC.



PARCEL MAP 1189, P.M. 12-90
 PARCEL MAP 2322, P.M. 24-23
 PARCEL MAP 2808, P.M. 29-09
 RECORD OF SURVEY, L.S. 20-1
 PARCEL MAP 3102, P.M. 32-03
 PARCEL MAP 3103, P.M. 32-04
 PARCEL MAP 4095, P.M. 41-99

PARCEL MAP 4489, P.M. 45-94
 RECORD OF SURVEY, L.S. 33-3
 B.P. POLYMERS INC., (UNREC.)

Bk. 081

CITY OF VISALIA
 ASSESSOR'S MAPS BK. 077 , PG. 13
 COUNTY OF TULARE, CALIFORNIA, U.S.A.

NOTE: Assessor's Parcel Numbers Shown in Circles (1) (123)
 Assessor's Block Numbers Shown in Elipses

ADD SCHOOL NAME	12/16/2015	ARL
REVISION	DATE	TECH