

DISCLAIMER

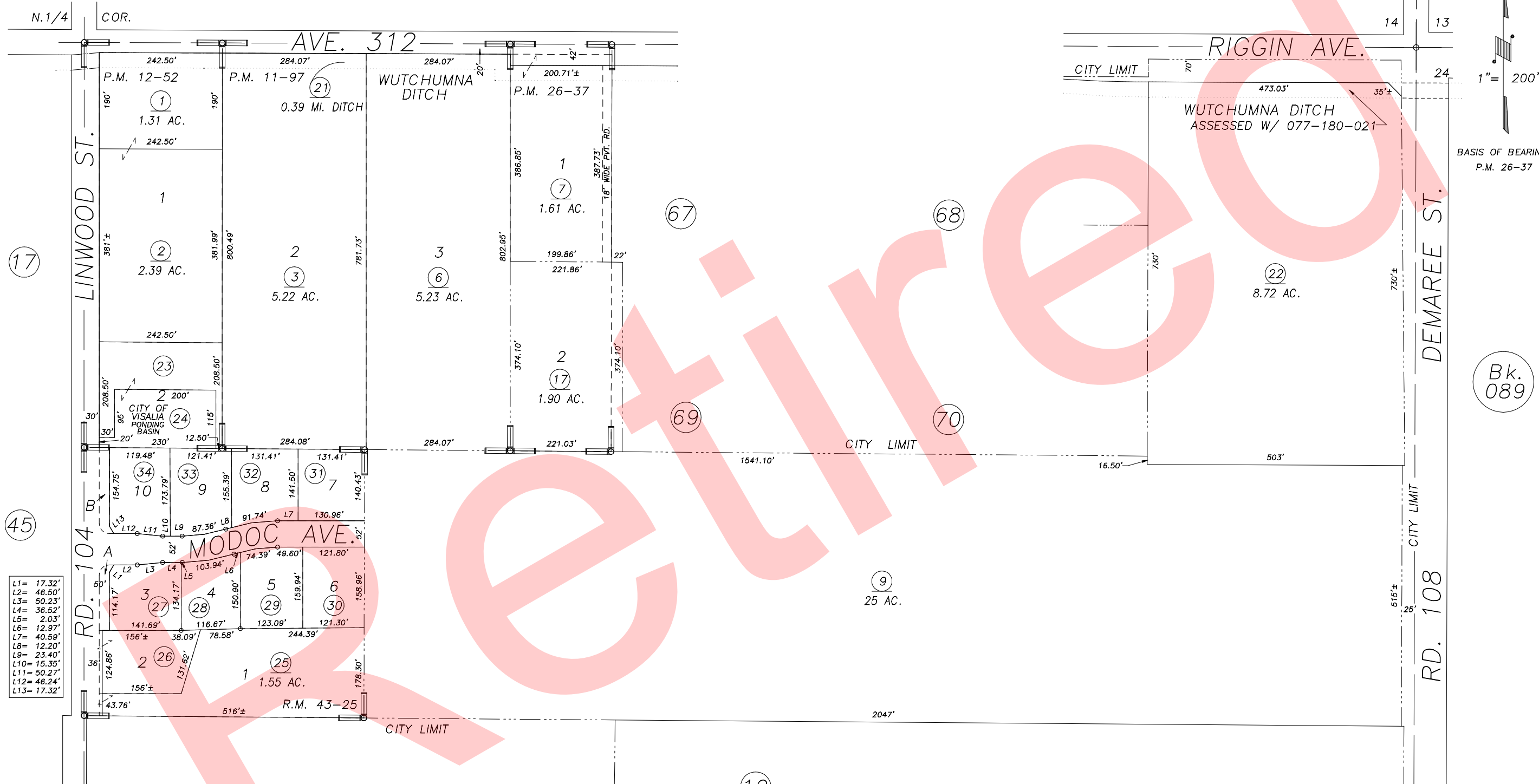
THIS MAP WAS PREPARED FOR LOCAL PROPERTY ASSESSMENT PURPOSES ONLY AND THE PARCELS SHOWN HEREON MAY NOT COMPLY WITH STATE AND LOCAL SUBDIVISION ORDINANCES, AND NO LIABILITY IS ASSUMED FOR THE USE OF THE INFORMATION SHOWN HEREON.

N1/2 OF NE1/4 SEC.23, T.18S., R.24E., M.D.B.&M.

Tax Area Codes 077-18

153-015

006-215



- L1= 17.32'
- L2= 46.50'
- L3= 50.23'
- L4= 36.52'
- L5= 2.03'
- L6= 12.97'
- L7= 40.58'
- L8= 12.20'
- L9= 23.40'
- L10= 15.35'
- L11= 50.27'
- L12= 46.24'
- L13= 17.32'

PARCEL MAP NO. 1096, P.M. 11-97  
 PARCEL MAP NO. 1151, P.M. 12-52  
 PARCEL MAP NO. 2536, P.M. 26-37  
 LOS GATOS, R.M. 43-25

VICINITY OF VISALIA  
 ASSESSOR'S MAPS BK.077 , PG.18  
 COUNTY OF TULARE, CALIFORNIA, U.S.A.