

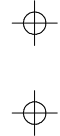
N1/2 OF NE1/4 SEC.23, T.18S., R.24E., M.D.B.&M.

Tax Area Codes 077-18

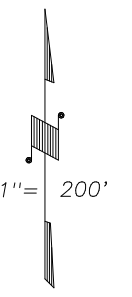
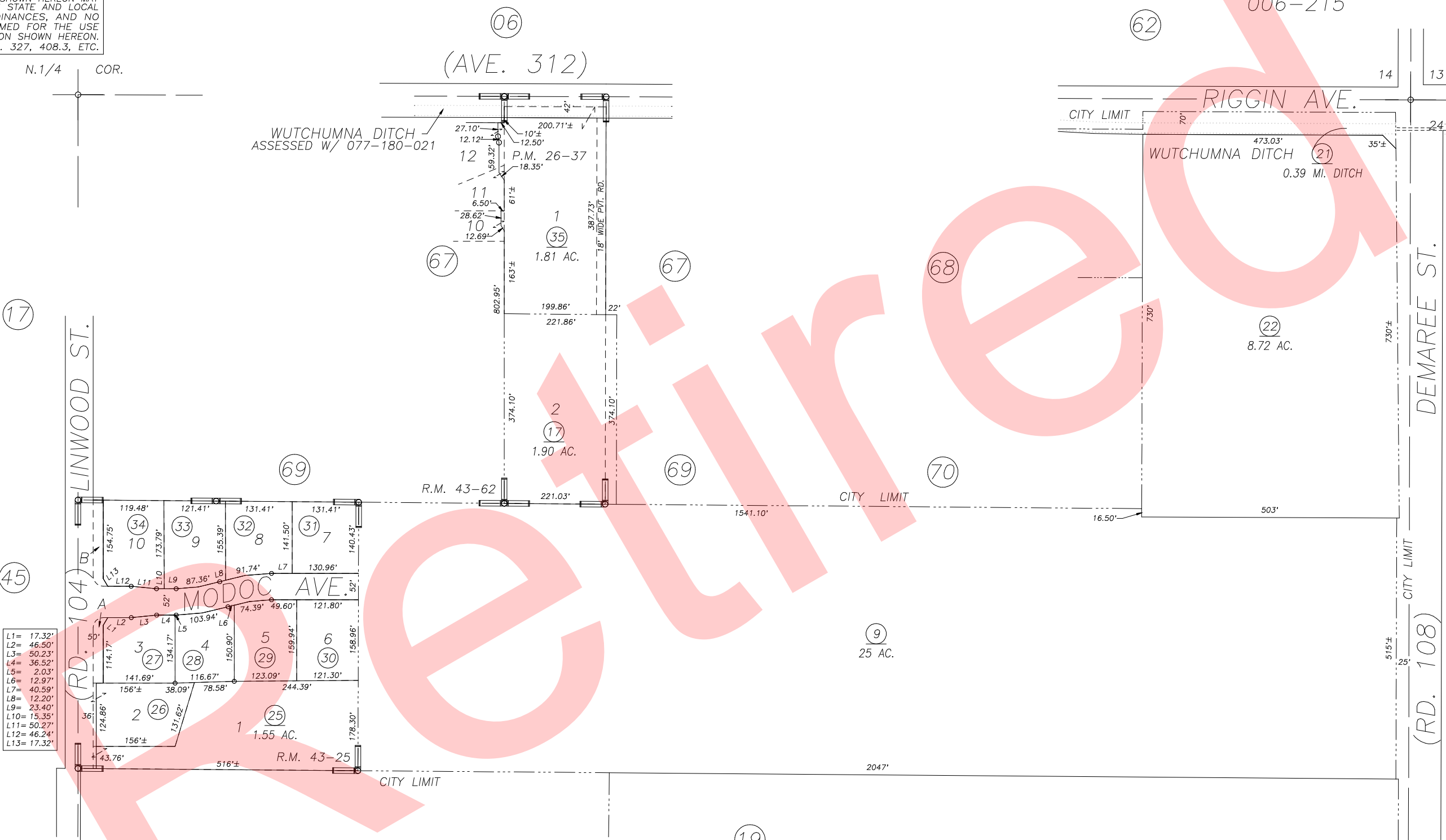
153-015

006-215

DISCLAIMER
 THIS MAP WAS PREPARED FOR LOCAL
 PROPERTY ASSESSMENT PURPOSES ONLY
 AND THE PARCELS SHOWN HEREON MAY
 NOT COMPLY WITH STATE AND LOCAL
 SUBDIVISION ORDINANCES, AND NO
 LIABILITY IS ASSUMED FOR THE USE
 OF THE INFORMATION SHOWN HEREON.
 R & T CODE SEC. 327, 408.3, ETC.



N.1/4 COR.



BASIS OF BEARINGS:
 P.M. 26-37

(17)

(45)

- L1= 17.32'
- L2= 46.50'
- L3= 50.23'
- L4= 36.52'
- L5= 2.03'
- L6= 12.97'
- L7= 40.59'
- L8= 12.20'
- L9= 23.40'
- L10= 15.35'
- L11= 50.27'
- L12= 46.24'
- L13= 17.32'

Bk.
 089

PARCEL MAP NO. 2536, P.M. 26-37
 LOS GATOS, R.M. 43-25
 POR. TUMBLE ROSE SUBDIVISION, R.M. 43-62

VICINITY OF VISALIA
 ASSESSOR'S MAPS BK. 077 , PG. 18
 COUNTY OF TULARE, CALIFORNIA, U.S.A.

NOTE: Assessor's Parcel Numbers Shown in Circles
 Assessor's Block Numbers Shown in Elipses

2016-0024969	06/23/2016	ARL
REVISION	DATE	TECH

(1) (123)