

N1/2 OF NE1/4 SEC.23, T.18S., R.24E., M.D.B.&M.

Tax Area Codes 077-18

153-015

006-215

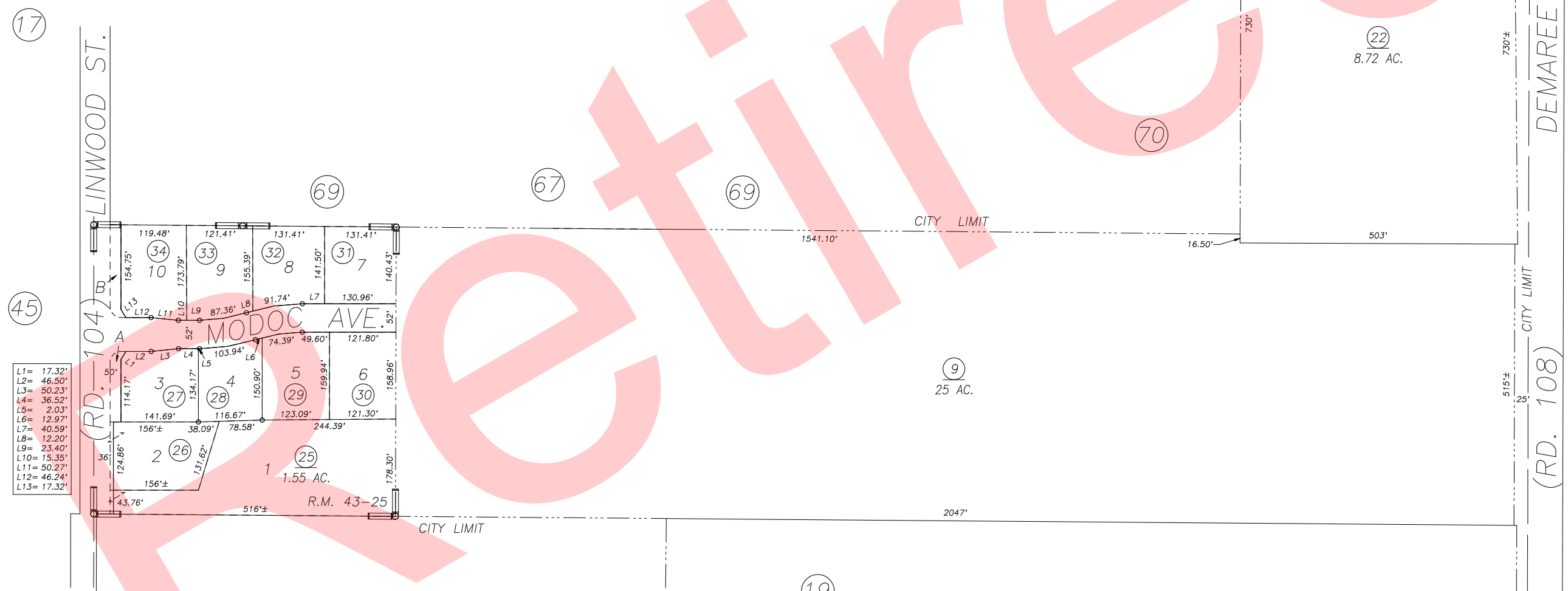
**DISCLAIMER**  
THIS MAP WAS PREPARED FOR LOCAL PROPERTY ASSESSMENT PURPOSES ONLY AND THE PARCELS SHOWN HEREON MAY NOT COMPLY WITH STATE AND LOCAL SUBDIVISION ORDINANCES, AND NO LIABILITY IS ASSUMED FOR THE USE OF THE INFORMATION SHOWN HEREON. R & T CODE SEC. 327, 408.3, ETC.

N.1/4 COR.

1" = 200'

BASIS OF BEARINGS:  
P.M. 26-37

Bk.  
089



- L1= 17.32'
- L2= 46.50'
- L3= 50.23'
- L4= 36.52'
- L5= 2.03'
- L6= 12.97'
- L7= 40.59'
- L8= 12.20'
- L9= 23.40'
- L10= 15.35'
- L11= 50.27'
- L12= 46.24'
- L13= 17.32'

PARCEL MAP NO. 2536, P.M. 26-37  
LOS GATOS, R.M. 43-25

VICINITY OF VISALIA  
ASSESSOR'S MAPS BK. 077 , PG. 18  
COUNTY OF TULARE, CALIFORNIA, U.S.A.

NOTE: Assessor's Parcel Numbers Shown in Circles ① 123  
Assessor's Block Numbers Shown in Elipses

2016-0036123	08/23/2016	GL
REVISION	DATE	TECH