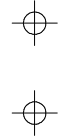


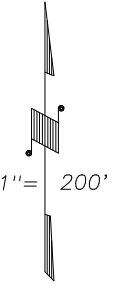
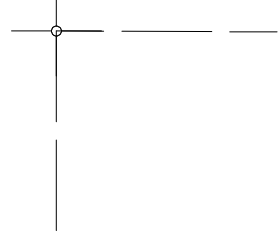
N1/2 OF NE1/4 SEC.23, T.18S., R.24E., M.D.B.&M.

Tax Area Codes 077-18
006-215

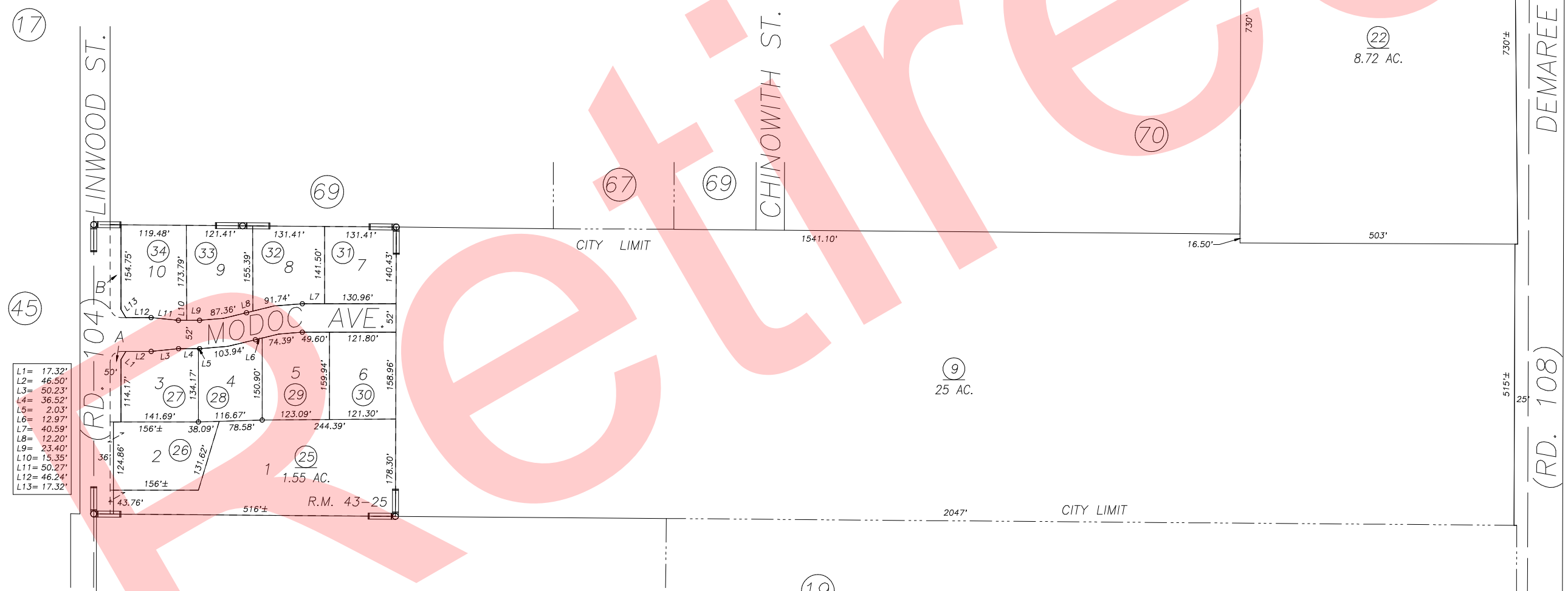
DISCLAIMER
THIS MAP WAS PREPARED FOR LOCAL
PROPERTY ASSESSMENT PURPOSES ONLY
AND THE PARCELS SHOWN HEREON MAY
NOT COMPLY WITH STATE AND LOCAL
SUBDIVISION ORDINANCES, AND NO
LIABILITY IS ASSUMED FOR THE USE
OF THE INFORMATION SHOWN HEREON.
R & T CODE SEC. 327, 408.3, ETC.



N.1/4 COR.



BASIS OF BEARINGS:
P.M. 26-37



- L1= 17.32'
- L2= 46.50'
- L3= 50.23'
- L4= 36.52'
- L5= 2.03'
- L6= 12.97'
- L7= 40.59'
- L8= 12.20'
- L9= 23.40'
- L10= 15.35'
- L11= 50.27'
- L12= 46.24'
- L13= 17.32'

PARCEL MAP NO. 2536, P.M. 26-37
LOS GATOS, R.M. 43-25

CITY OF VISALIA
ASSESSOR'S MAPS BK. 077 , PG. 18
COUNTY OF TULARE, CALIFORNIA, U.S.A.

NOTE: Assessor's Parcel Numbers Shown in Circles ① (123)
Assessor's Block Numbers Shown in Ellipses (123)

TRAC CHANGE	06/02/2017	ASG
REVISION	DATE	TECH