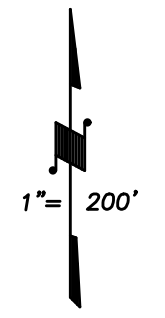
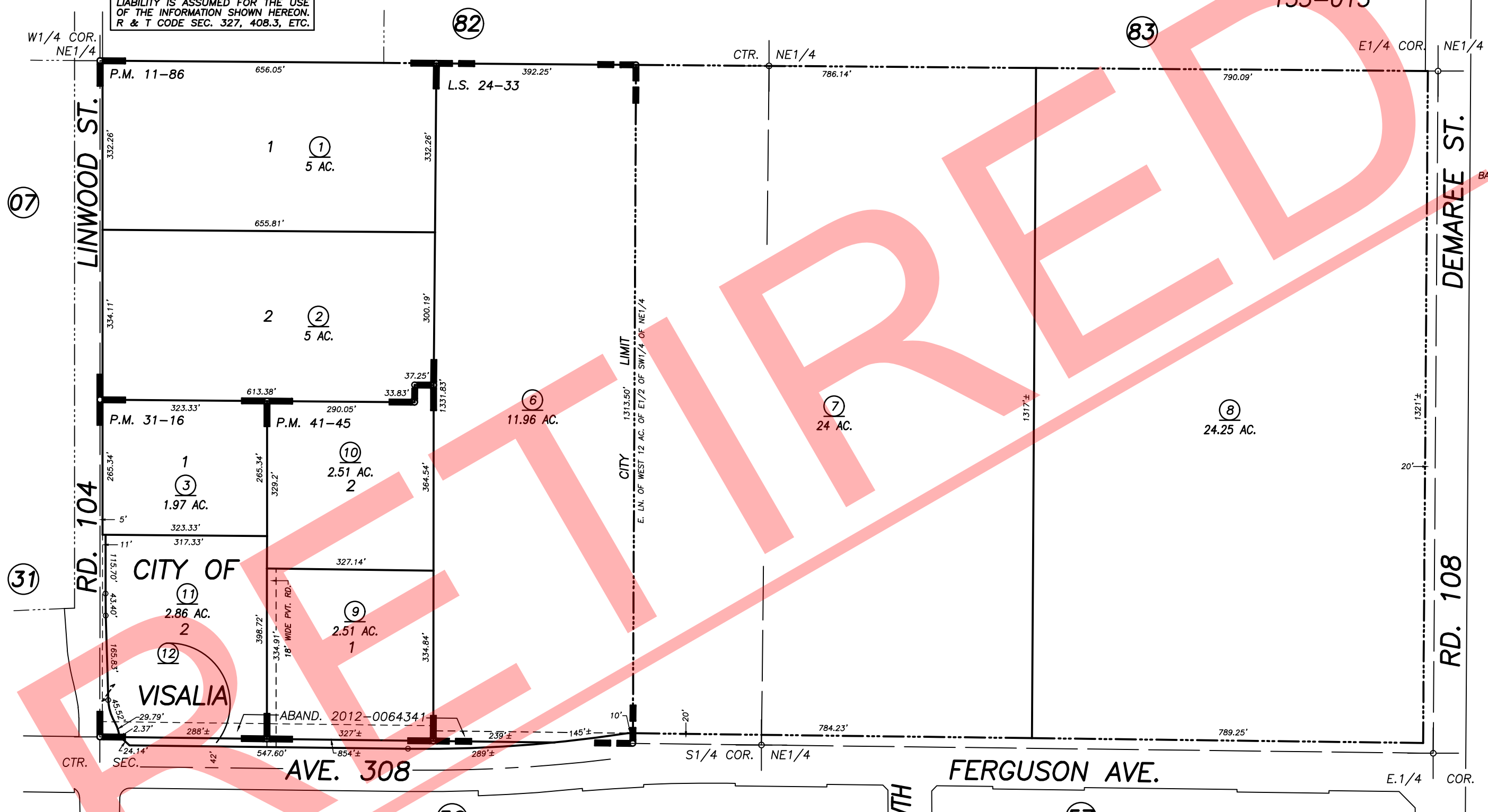


S1/2 OF NE1/4 SEC.23, T.18S., R.24E., M.D.B.&M.

Tax Area Codes 077-19

006-200
006-215
153-015

DISCLAIMER
THIS MAP WAS PREPARED FOR LOCAL PROPERTY ASSESSMENT PURPOSES ONLY AND THE PARCELS SHOWN HEREON MAY NOT COMPLY WITH STATE AND LOCAL SUBDIVISION ORDINANCES, AND NO LIABILITY IS ASSUMED FOR THE USE OF THE INFORMATION SHOWN HEREON. R & T CODE SEC. 327, 408.3, ETC.



BASIS OF BEARINGS:
P.M. 41-45

Bk. 089

PARCEL MAP NO. 1085, P.M. 11-86
PARCEL MAP NO. 3015, P.M. 31-16
PARCEL MAP NO. 4041, P.M. 41-45
RECORD OF SURVEY, L.S. 24-33

VICINITY OF VISALIA
ASSESSOR'S MAPS BK. 077 , PG. 19
COUNTY OF TULARE, CALIFORNIA, U.S.A.

NOTE: Assessor's Parcel Numbers Shown in Circles (1) (123)
Assessor's Block Numbers Shown in Ellipses (07) (31) (56) (82) (83) (57)

ADJ PAGE UPDATE	09/14/2017	NFL
REVISION	DATE	TECH