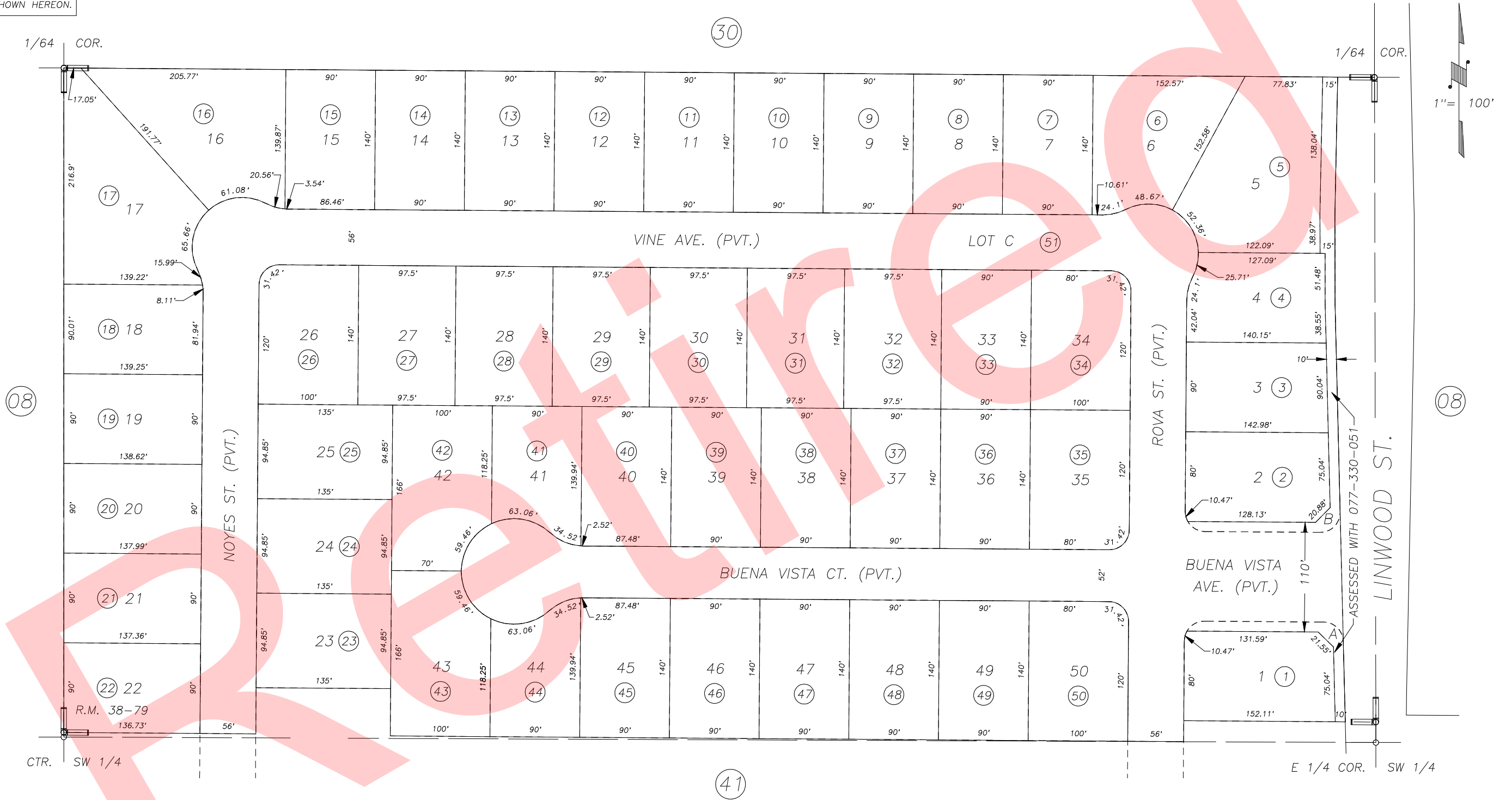


DISCLAIMER
 THIS MAP WAS PREPARED FOR LOCAL PROPERTY ASSESSMENT PURPOSES ONLY AND THE PARCELS SHOWN HEREON MAY NOT COMPLY WITH STATE AND LOCAL SUBDIVISION ORDINANCES, AND NO LIABILITY IS ASSUMED FOR THE USE OF THE INFORMATION SHOWN HEREON.

POR. NE1/4 OF SW1/4 SEC.23, T.18S., R.24E., M.D.B.&M.

Tax Area Code 077-33
 006-215



POR. COBBLESTONE ESTATES UNIT NO. 1, R.M. 38-79

CITY OF VISALIA
 ASSESSOR'S MAPS BK. 077 , PG. 33
 COUNTY OF TULARE, CALIFORNIA, U.S.A.

NOTE: Assessor's Parcel Numbers Shown in Circles ① 123
 Assessor's Block Numbers Shown in Elipses ① ② ③

| | | |
|-----------------|------------|------|
| PRIVATE STREETS | 10/16/2002 | KMS |
| REVISION | DATE | TECH |