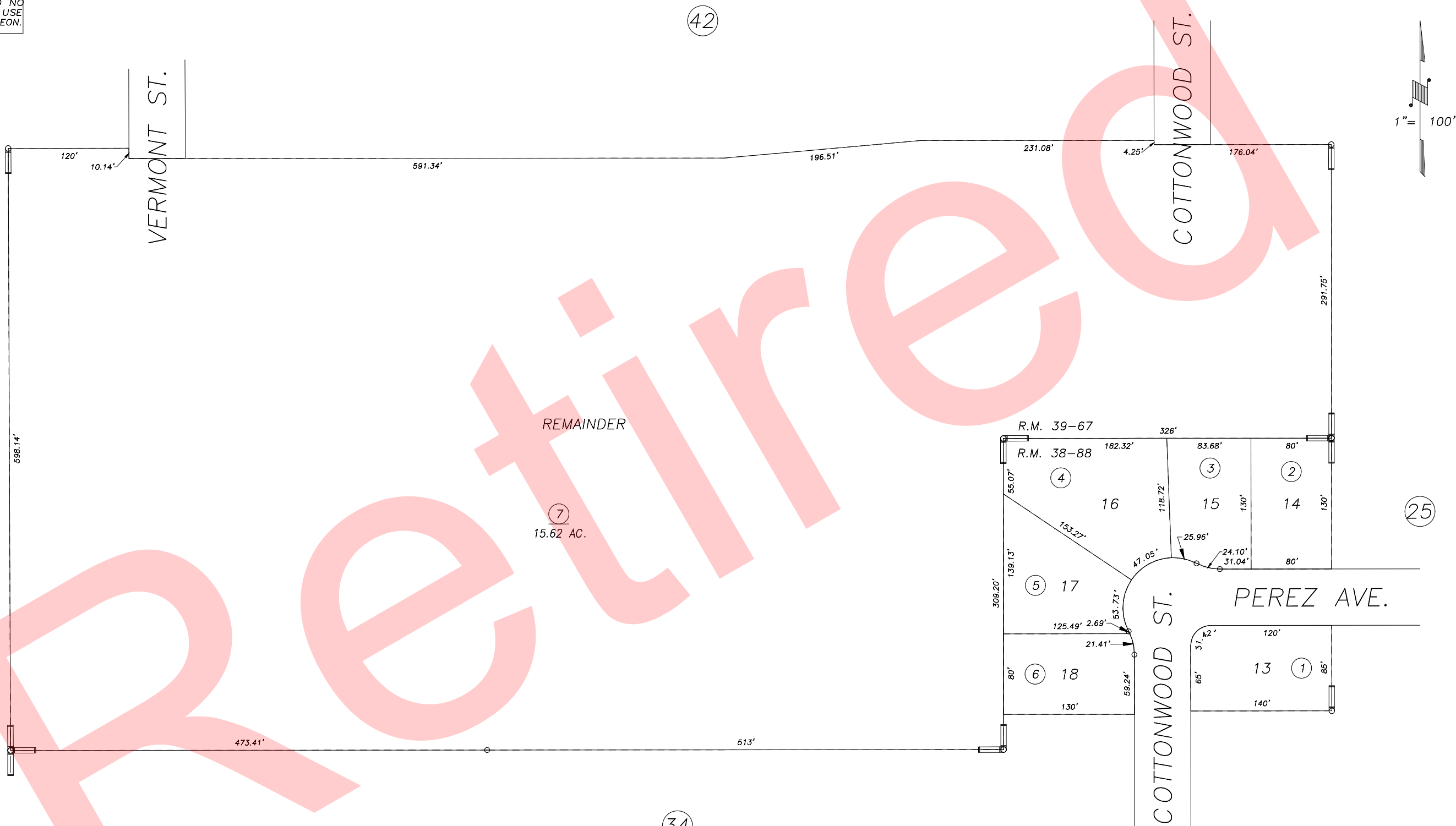


DISCLAIMER
 THIS MAP WAS PREPARED FOR LOCAL PROPERTY ASSESSMENT PURPOSES ONLY AND THE PARCELS SHOWN HEREON MAY NOT COMPLY WITH STATE AND LOCAL SUBDIVISION ORDINANCES, AND NO LIABILITY IS ASSUMED FOR THE USE OF THE INFORMATION SHOWN HEREON.

N1/2 OF NW1/4 OF SE1/4, SEC.22, T.18S., R.24E., M.D.B.&M.

Tax Area Codes 077-35
 006-174



POR. MARSEILLE SUBDIVISION UNIT NO. 3, R.M. 38-88
 POR. AMENDED FOXWOOD ESTATES, UNIT NO. 3, R.M. 39-67

CITY OF VISALIA
 ASSESSOR'S MAPS BK.077 , PG.35
 COUNTY OF TULARE, STATE OF CALIFORNIA, U.S.A.

NOTE: Assessor's Parcel Numbers Shown in Circles
 Assessor's Block Numbers Shown in Elipses

2002-REVIEW	12/17/2002	RJL
REVISION	DATE	TECH