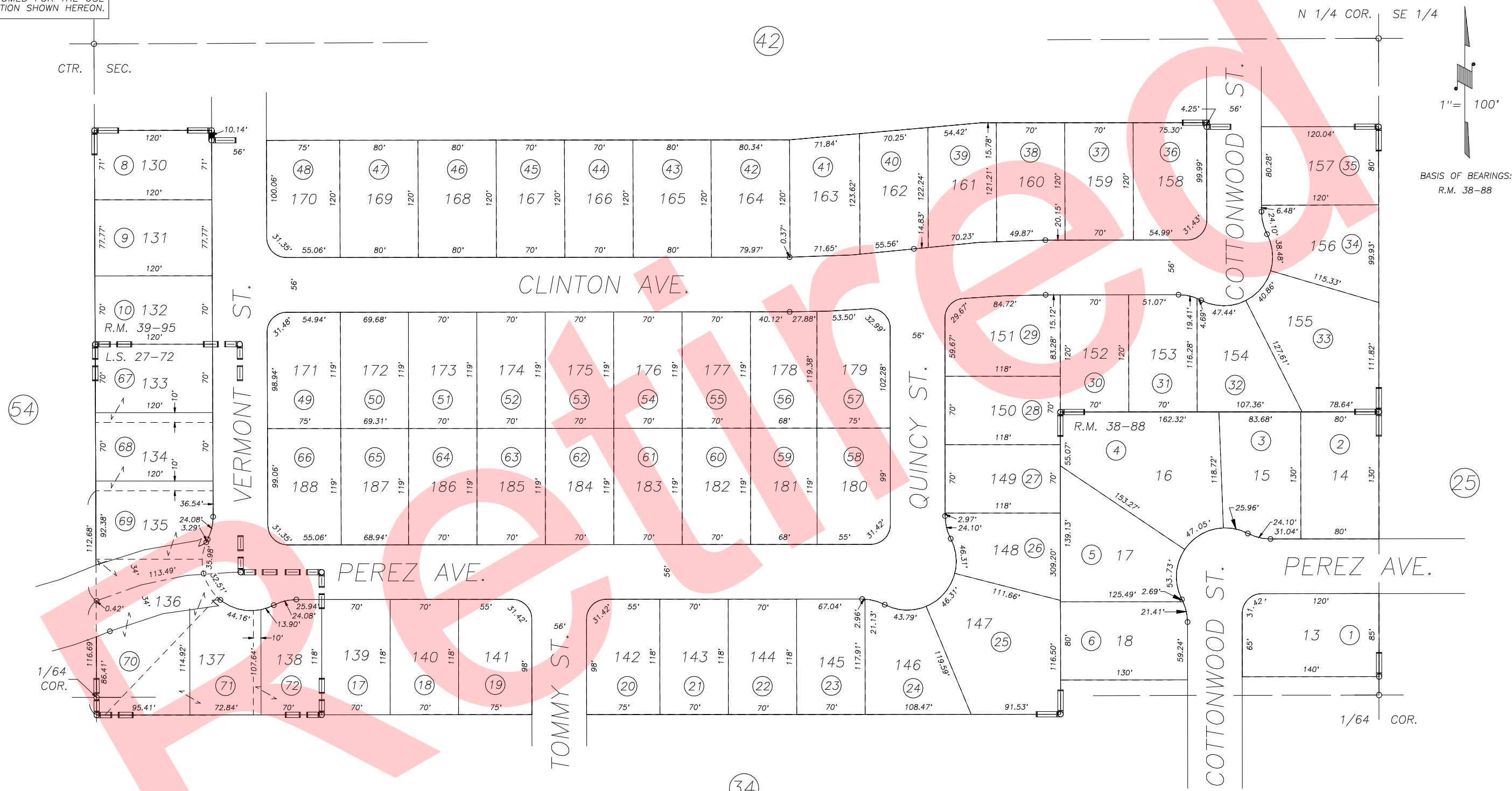


DISCLAIMER
 THIS MAP WAS PREPARED FOR LOCAL PROPERTY ASSESSMENT PURPOSES ONLY AND THE PARCELS SHOWN HEREON MAY NOT COMPLY WITH STATE AND LOCAL SUBDIVISION ORDINANCES, AND NO LIABILITY IS ASSUMED FOR THE USE OF THE INFORMATION SHOWN HEREON.

N1/2 OF NW1/4 OF SE1/4, SEC.22, T.18S., R.24E., M.D.B.&M.

Tax Area Codes 077-35
 006-174



POR. MARSEILLE SUBDIVISION UNIT NO. 3, R.M. 38-88
 FOXWOOD ESTATES, UNIT NO. 4, R.M. 39-95
 POR. RECORD OF SURVEY, L.S. 20-17 (SEC.22,ETC.)
 RECORD OF SURVEY, L.S. 27-72

CITY OF VISALIA
 ASSESSOR'S MAPS BK.077 , PG.35
 COUNTY OF TULARE, STATE OF CALIFORNIA, U.S.A.

NOTE: Assessor's Parcel Numbers Shown in Circles ① 123
 Assessor's Block Numbers Shown in Ellipses

2005-0142766	05/31/2006	MLC
REVISION	DATE	TECH