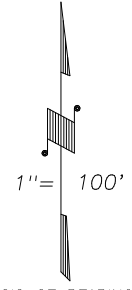
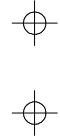


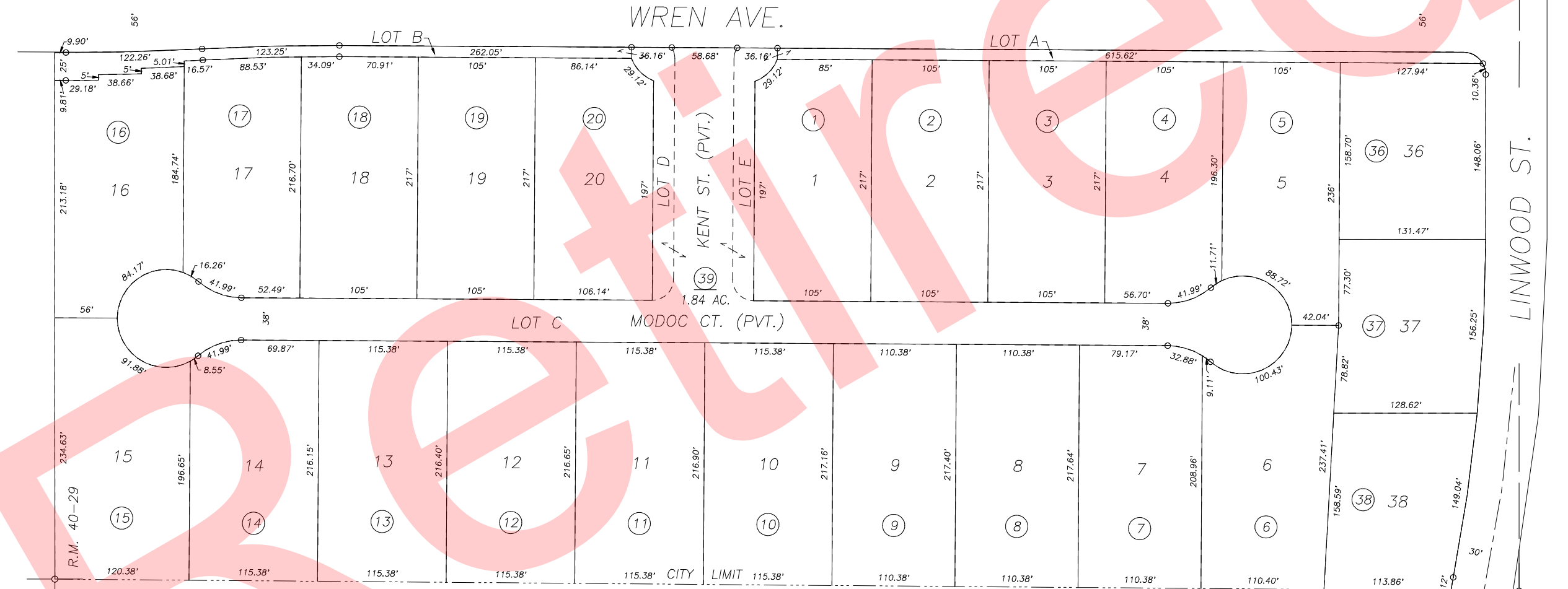
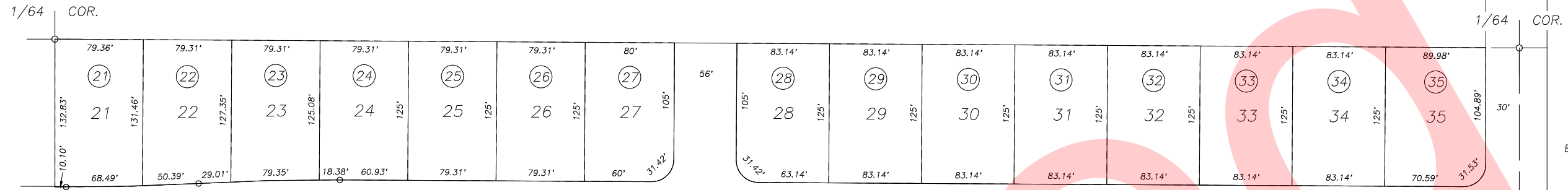
S1/2 OF NE1/4 OF NW1/4 SEC.23, T.18S., R.24E., M.D.B.&M.

Tax Area Codes 077-45
006-215

DISCLAIMER
THIS MAP WAS PREPARED FOR LOCAL PROPERTY ASSESSMENT PURPOSES ONLY AND THE PARCELS SHOWN HEREON MAY NOT COMPLY WITH STATE AND LOCAL SUBDIVISION ORDINANCES, AND NO LIABILITY IS ASSUMED FOR THE USE OF THE INFORMATION SHOWN HEREON.



1" = 100'
BASIS OF BEARINGS:
R.M. 40-29



43

18

LA VALENCIA, R.M. 40-29

CITY OF VISALIA
ASSESSOR'S MAPS BK. 077 , PG. 45
COUNTY OF TULARE, CALIFORNIA, U.S.A.

NOTE: Assessor's Parcel Numbers Shown in Circles
Assessor's Block Numbers Shown in Elipses

123

UPDATE T.R.A.C.	07/19/2007	JRS
REVISION	DATE	TECH