

N1/2 OF NW1/4 OF NE1/4 SEC.26, T.18S., R.24E., M.D.B.&M.

Tax Area Codes 077-48

006-123

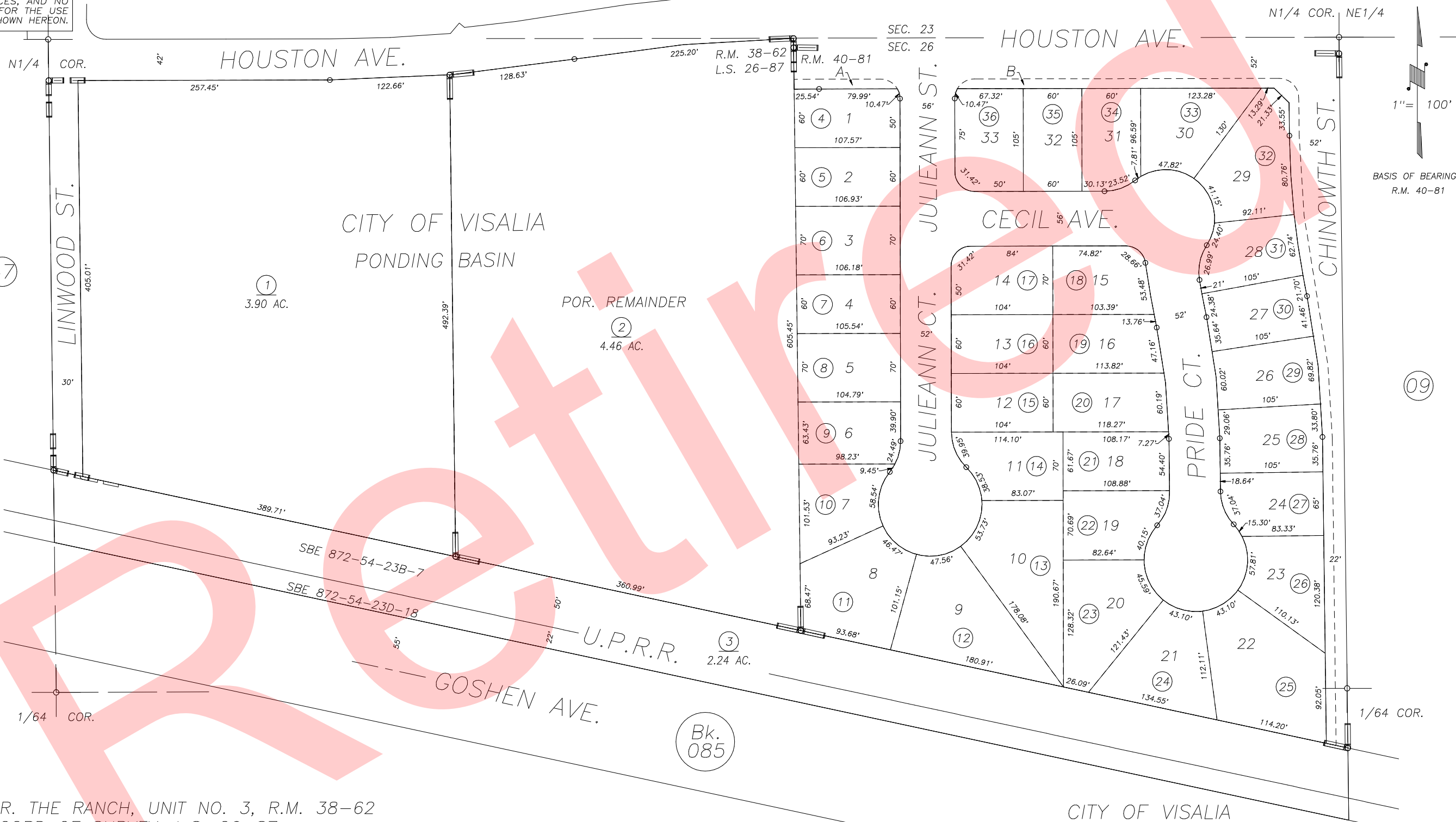
006-215

DISCLAIMER
THIS MAP WAS PREPARED FOR LOCAL PROPERTY ASSESSMENT PURPOSES ONLY AND THE PARCELS SHOWN HEREON MAY NOT COMPLY WITH STATE AND LOCAL SUBDIVISION ORDINANCES, AND NO LIABILITY IS ASSUMED FOR THE USE OF THE INFORMATION SHOWN HEREON.

(38)

1" = 100'

BASIS OF BEARINGS:
R.M. 40-81



CITY OF VISALIA
PONDING BASIN
POR. REMAINDER

HOUSTON AVE.

CECIL AVE.

JULIEANN ST.

PRIDE CT.

GOSHEN AVE.

LINWOOD ST.

CHINOWTH ST.

POR. THE RANCH, UNIT NO. 3, R.M. 38-62
RECORD OF SURVEY, L.S. 26-87
THE RANCH, UNIT NO. 4, R.M. 40-81

CITY OF VISALIA
ASSESSOR'S MAPS BK. 077 , PG. 48
COUNTY OF TULARE, CALIFORNIA, U.S.A.

NOTE: Assessor's Parcel Numbers Shown in Circles
Assessor's Block Numbers Shown in Elipses

| | | |
|--------------|------------|------|
| 2004-0078479 | 09/29/2004 | JAL |
| REVISION | DATE | TECH |

Bk. 085

(09)

(47)

(1)
3.90 AC.

(2)
4.46 AC.

(3)
2.24 AC.

(1) (123)