

N1/2 OF NW1/4 OF NE1/4 SEC.26, T.18S., R.24E., M.D.B.&M.

Tax Area Codes 077-48

006-123

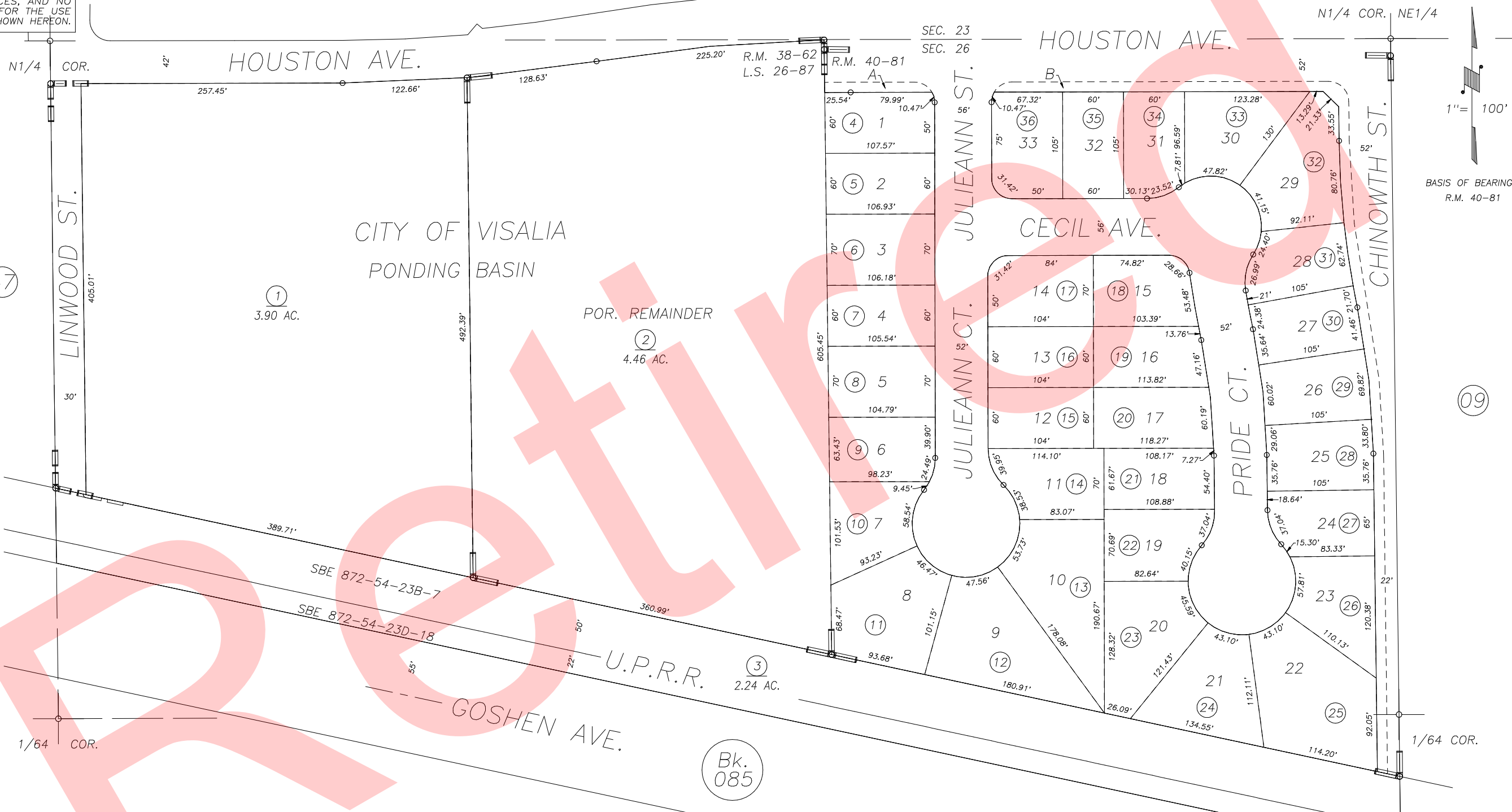
006-215

DISCLAIMER
THIS MAP WAS PREPARED FOR LOCAL PROPERTY ASSESSMENT PURPOSES ONLY AND THE PARCELS SHOWN HEREON MAY NOT COMPLY WITH STATE AND LOCAL SUBDIVISION ORDINANCES, AND NO LIABILITY IS ASSUMED FOR THE USE OF THE INFORMATION SHOWN HEREON.

(38)

1" = 100'

BASIS OF BEARINGS:
R.M. 40-81



POR. THE RANCH, UNIT NO. 3, R.M. 38-62
RECORD OF SURVEY, L.S. 26-87
THE RANCH, UNIT NO. 4, R.M. 40-81

CITY OF VISALIA
ASSESSOR'S MAPS BK. 077 , PG. 48
COUNTY OF TULARE, CALIFORNIA, U.S.A.

NOTE: Assessor's Parcel Numbers Shown in Circles
Assessor's Block Numbers Shown in Elipses

2004-0078479	09/29/2004	JAL
REVISION	DATE	TECH

(1) (123)

(09)

Bk.
085

(47)

1/64 COR.

N1/4 COR. NE1/4

1/64 COR.

SEC. 23
SEC. 26

R.M. 38-62
L.S. 26-87

R.M. 40-81

JULIEANN ST.

HOUSTON AVE.

CECIL AVE.

PRIDE CT.

CHINOWTH ST.

CITY OF VISALIA
PONDING BASIN

POR. REMAINDER

U.P.R.R.

GOSHEN AVE.

LINWOOD ST.

HOUSTON AVE.

(1)
3.90 AC.

(2)
4.46 AC.

(3)
2.24 AC.

(4) 1

(5) 2

(6) 3

(7) 4

(8) 5

(9) 6

(10) 7

(11) 8

(12) 9

(13) 10

(36) 33

(35) 32

(34) 31

(14) 17

(13) 16

(12) 15

(11) 14

(10) 13

(23) 20

(22) 19

(21) 18

(20) 17

(19) 16

(18) 15

(17) 14

(16) 13

(15) 12

(14) 11

(33) 30

(32) 29

(31) 28

(30) 27

(29) 26

(28) 25

(27) 24

(26) 23

(25) 22

(24) 21

(23) 20

(22) 19

(21) 18

(20) 17

(19) 16

(18) 15

(17) 14

(16) 13

(32) 29

(31) 28

(30) 27

(29) 26

(28) 25

(27) 24

(26) 23

(25) 22

(24) 21

(23) 20

(22) 19

(21) 18

(20) 17

(19) 16

(18) 15

(17) 14

(16) 13

(15) 12

(32) 29

(31) 28

(30) 27

(29) 26

(28) 25

(27) 24

(26) 23

(25) 22

(24) 21

(23) 20

(22) 19

(21) 18

(20) 17

(19) 16

(18) 15

(17) 14

(16) 13

(15) 12