

N1/2 OF NW1/4 OF NE1/4 SEC.26, T.18S., R.24E., M.D.B.&M.

Tax Area Codes 077-48

006-123

006-215

DISCLAIMER
THIS MAP WAS PREPARED FOR LOCAL
PROPERTY ASSESSMENT PURPOSES ONLY
AND THE PARCELS SHOWN HEREON MAY
NOT COMPLY WITH STATE AND LOCAL
SUBDIVISION ORDINANCES, AND NO
LIABILITY IS ASSUMED FOR THE USE
OF THE INFORMATION SHOWN HEREON.

HOUSTON AVE.

(38)

N1/4 COR.

HOUSTON AVE.

SEC. 23
SEC. 26

HOUSTON AVE.

N1/4 COR. NE1/4

42' 257.45' 122.66' 128.63' 225.20' R.M. 38-62 L.S. 26-87 R.M. 40-81

(47)

(37)

(1)
3.90 AC.

POR. REMAINDER

(2)
4.46 AC.

CITY OF VISALIA
PONDING BASIN

30.76'

399'±

405.01'

30'± WIDE PVT. RD.

30.76'

389.71'

360.99'

1/64 COR.

SBE 872-54-23B-7

SBE 872-54-23D-18

U.P.R.R.

(3)
2.24 AC.

GOSHEN AVE.

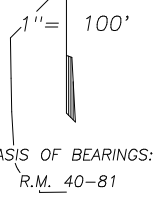
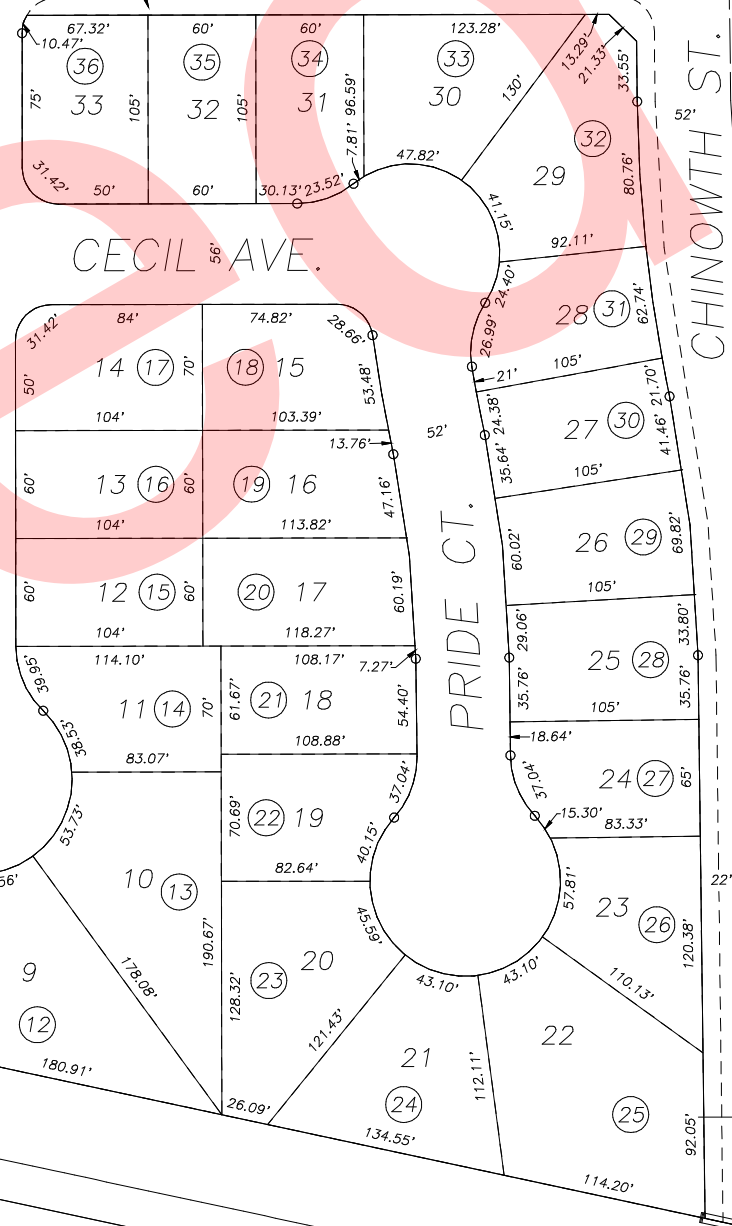
Bk.
085

JULIEANN CT.

CECIL AVE.

PRIDE CT.

CHINOWTH ST.



POR. THE RANCH, UNIT NO. 3, R.M. 38-62
RECORD OF SURVEY, L.S. 26-87
THE RANCH, UNIT NO. 4, R.M. 40-81

CITY OF VISALIA
ASSESSOR'S MAPS BK. 077 , PG. 48
COUNTY OF TULARE, CALIFORNIA, U.S.A.

NOTE: Assessor's Parcel Numbers Shown in Circles (1) (123)
Assessor's Block Numbers Shown in Elipses

ADD APN 037	02/07/2012	JRS
REVISION	DATE	TECH