

N1/2 OF NW1/4 OF NE1/4 SEC. 22, T.18S., R.24E., M.D.B.&M.

Tax Area Codes 077-49
153-015

DISCLAIMER

THIS MAP WAS PREPARED FOR LOCAL
PROPERTY ASSESSMENT PURPOSES ONLY
AND THE PARCELS SHOWN HEREON MAY
NOT COMPLY WITH STATE AND LOCAL
SUBDIVISION ORDINANCES, AND NO
LIABILITY IS ASSUMED FOR THE USE
OF THE INFORMATION SHOWN HEREON.

10

N.1/4 COR.

N1/4 COR. NE1/4

RIGGIN AVE.

1156.40'

1

1" = 100'

BASIS OF BEARINGS:
R.M. 41-1

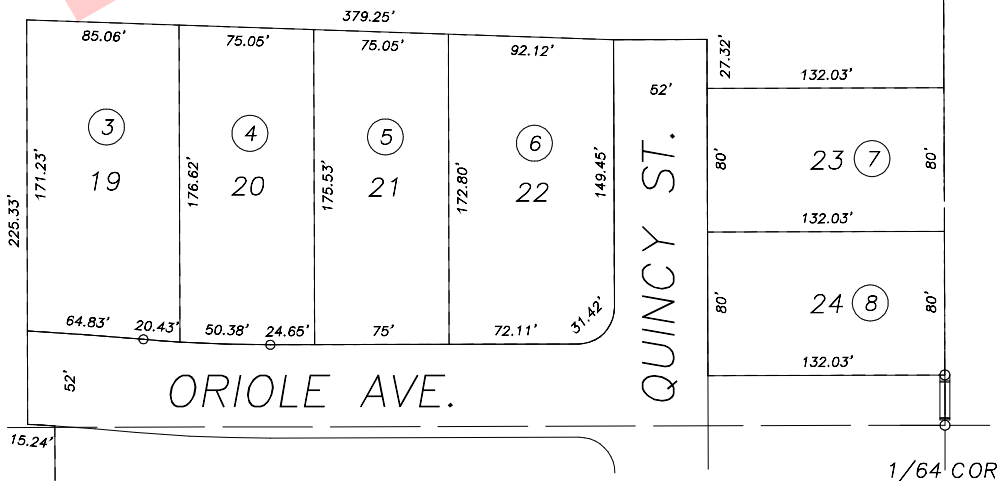
10

2

19.12 AC.
REMAINDER

10

801.18'



1/64 COR.

R.M. 41-1

819.79'

POR. AMBER CROSSING UNIT NO. 1, R.M. 41-1

50

VICINITY OF VISALIA
ASSESSOR'S MAPS BK.077 , PG.49
COUNTY OF TULARE, CALIFORNIA, U.S.A.

NOTE: Assessor's Parcel Numbers Shown in Circles
Assessor's Block Numbers Shown in Elipses

2004-0120371	12/07/2004	LDG
REVISION	DATE	TECH

Retired