

N1/2 OF NW1/4 OF NE1/4 SEC.22, T.18S., R.24E., M.D.B.&M.

Tax Area Codes 077-49
006-215

DISCLAIMER

THIS MAP WAS PREPARED FOR LOCAL
PROPERTY ASSESSMENT PURPOSES ONLY
AND THE PARCELS SHOWN HEREON MAY
NOT COMPLY WITH STATE AND LOCAL
SUBDIVISION ORDINANCES, AND NO
LIABILITY IS ASSUMED FOR THE USE
OF THE INFORMATION SHOWN HEREON.

10

N.1/4 COR.

N1/4 COR. NE1/4

CITY RIGGIN AVE. LIMIT

1156.40'

1

1" = 100'

BASIS OF BEARINGS:
R.M. 41-1

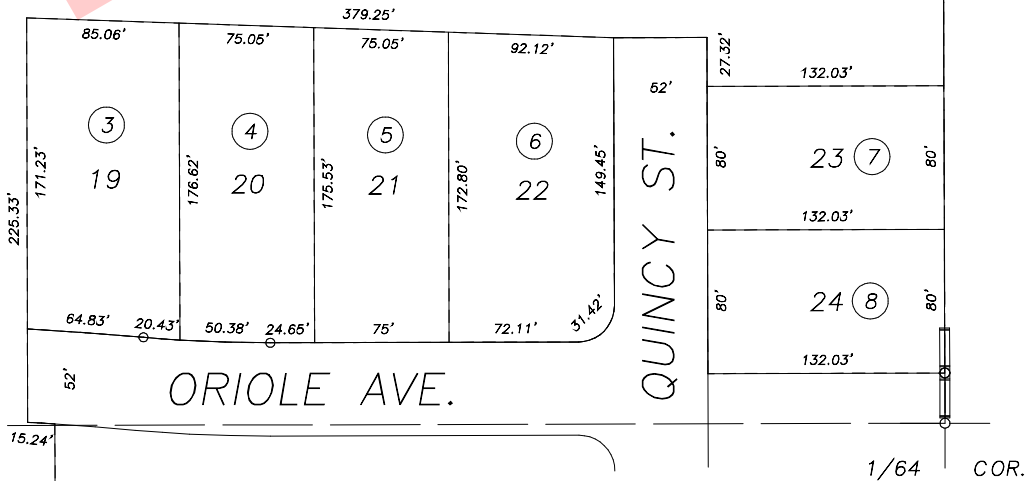
10

2

19.12 AC.
REMAINDER

10

801.18'



1/64 COR.

1/64 COR.

ORIOLE AVE.

QUINCY ST.

R.M. 41-1

819.79'

POR. AMBER CROSSING UNIT NO. 1, R.M. 41-1

CITY OF VISALIA
ASSESSOR'S MAPS BK.077 , PG.49
COUNTY OF TULARE, CALIFORNIA, U.S.A.

NOTE: Assessor's Parcel Numbers Shown in Circles
Assessor's Block Numbers Shown in Elipses

1	123	T.R.A.C. CHANGE	07/17/2006	PHN
		REVISION	DATE	TECH

Retired