

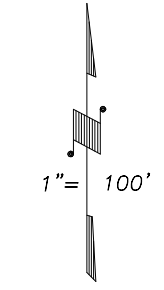
N1/2 OF NW1/4 OF NE1/4 SEC.22, T.18S., R.24E., M.D.B.&M.

Tax Area Codes 077-49  
006-215

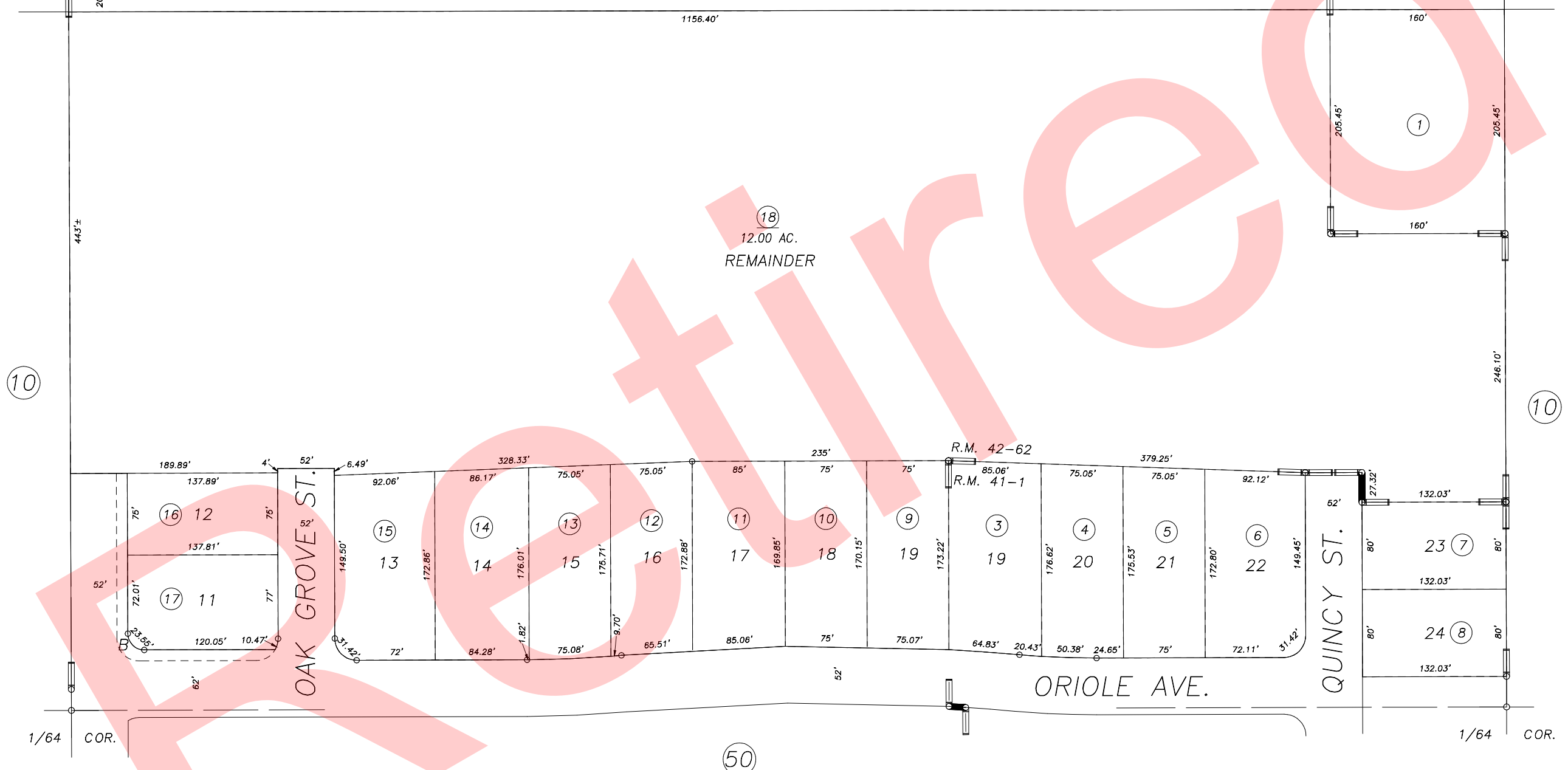
**DISCLAIMER**  
THIS MAP WAS PREPARED FOR LOCAL PROPERTY ASSESSMENT PURPOSES ONLY AND THE PARCELS SHOWN HEREON MAY NOT COMPLY WITH STATE AND LOCAL SUBDIVISION ORDINANCES, AND NO LIABILITY IS ASSUMED FOR THE USE OF THE INFORMATION SHOWN HEREON.

10

N.1/4 COR. RIGGIN AVE. CITY LIMIT N1/4 COR. NE1/4



BASIS OF BEARINGS:  
R.M. 41-1



10

10

50

POR. AMBER CROSSING UNIT NO. 1, R.M. 41-1  
POR. AMBER CROSSING UNIT NO. 3, R.M. 42-62

CITY OF VISALIA  
ASSESSOR'S MAPS BK.077 , PG.49  
COUNTY OF TULARE, CALIFORNIA, U.S.A.

NOTE: Assessor's Parcel Numbers Shown in Circles ① 123  
Assessor's Block Numbers Shown in Elipses ⑩ 123

2007-0037574	04/15/2008	MLC
REVISION	DATE	TECH

Retired