

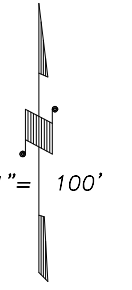
N1/2 OF NW1/4 OF NE1/4 SEC.22, T.18S., R.24E., M.D.B.&M.

Tax Area Codes 077-49  
006-215

DISCLAIMER

THIS MAP WAS PREPARED FOR LOCAL PROPERTY ASSESSMENT PURPOSES ONLY AND THE PARCELS SHOWN HEREON MAY NOT COMPLY WITH STATE AND LOCAL SUBDIVISION ORDINANCES, AND NO LIABILITY IS ASSUMED FOR THE USE OF THE INFORMATION SHOWN HEREON.

10



BASIS OF BEARINGS:  
R.M. 41-1

N.1/4 COR.

N1/4 COR. NE1/4

RIGGIN AVE. CITY LIMIT

1156.40'

443'±

10

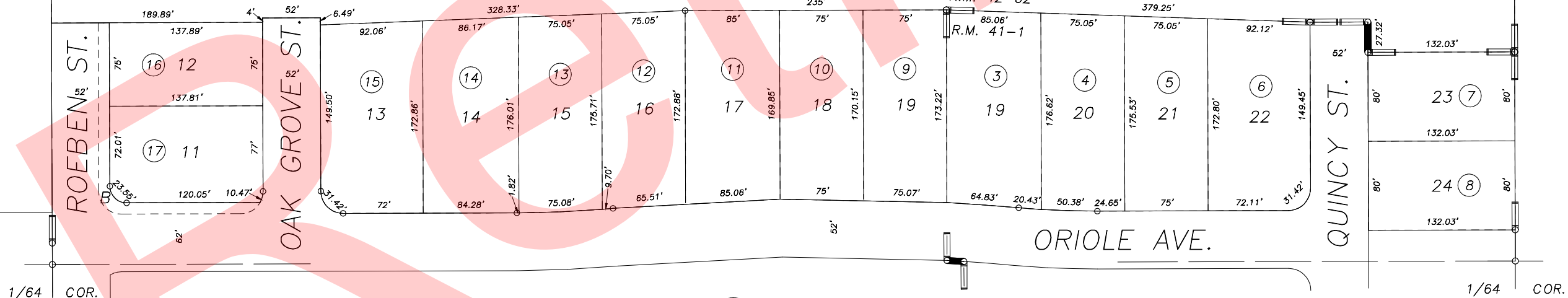
10

18  
12.00 AC.  
REMAINDER

ROEBEN ST.

OAK GROVE ST.

QUINCY ST.



POR. AMBER CROSSING UNIT NO. 1, R.M. 41-1  
POR. AMBER CROSSING UNIT NO. 3, R.M. 42-62

50

ORIOLE AVE.

1/64 COR.

CITY OF VISALIA

ASSESSOR'S MAPS BK.077 , PG.49  
COUNTY OF TULARE, CALIFORNIA, U.S.A.

NOTE: Assessor's Parcel Numbers Shown in Circles  
Assessor's Block Numbers Shown in Elipses

UPDATE ADJ. PAGE	03/02/2010	MLC
REVISION	DATE	TECH

Retired