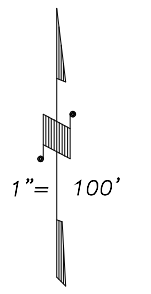
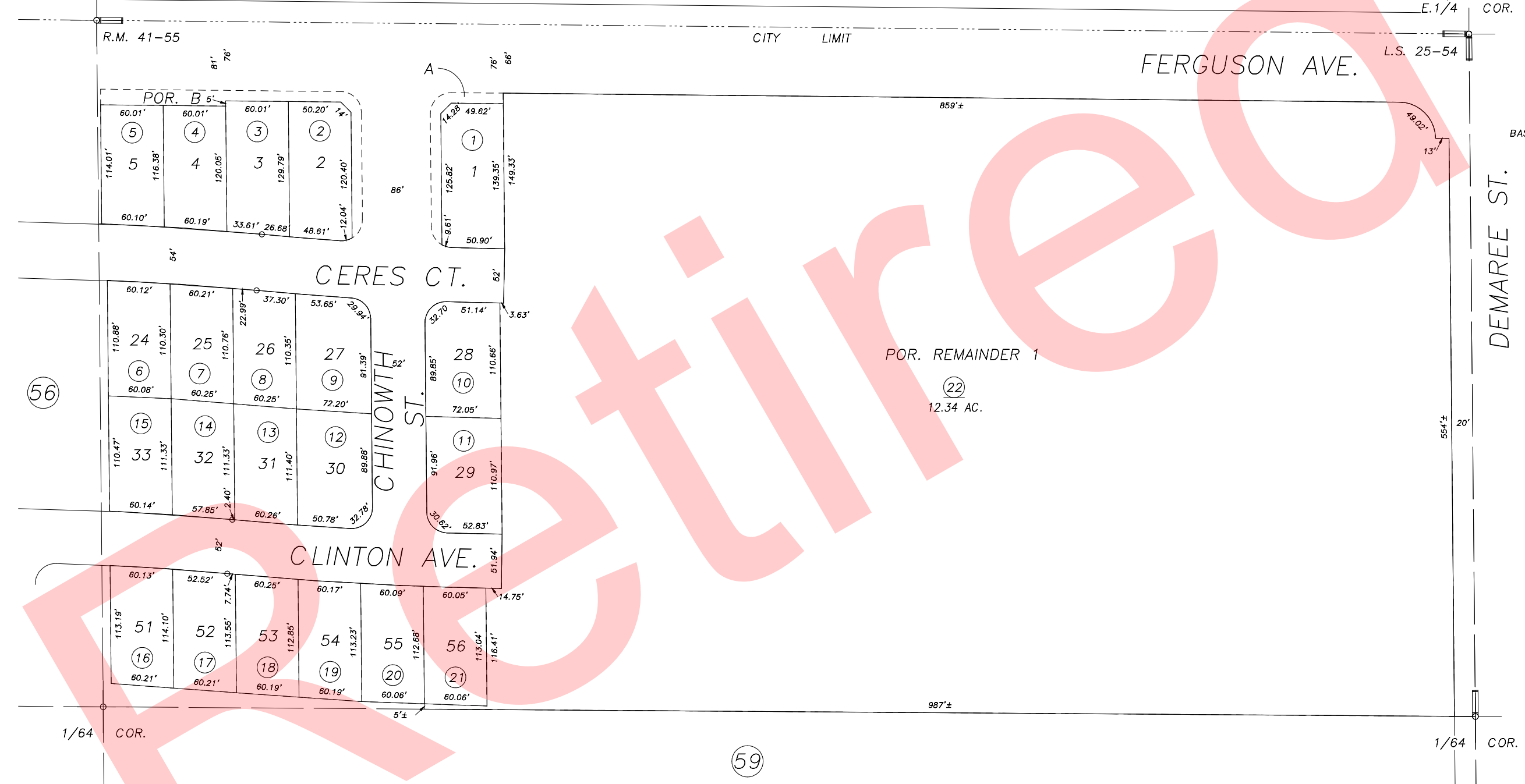


DISCLAIMER
THIS MAP WAS PREPARED FOR LOCAL PROPERTY ASSESSMENT PURPOSES ONLY AND THE PARCELS SHOWN HEREON MAY NOT COMPLY WITH STATE AND LOCAL SUBDIVISION ORDINANCES, AND NO LIABILITY IS ASSUMED FOR THE USE OF THE INFORMATION SHOWN HEREON.

19

N 1/4 COR. SE 1/4



BASIS OF BEARINGS:
L.S. 25-54

DEMAREE ST.

Bk.
089

POR. RECORD OF SURVEY, L.S. 25-54,
POR. SILVER OAKS, UNIT NO. 1, R.M. 41-44

CITY OF VISALIA
ASSESSOR'S MAPS BK.077 , PG.57
COUNTY OF TULARE, CALIFORNIA, U.S.A.