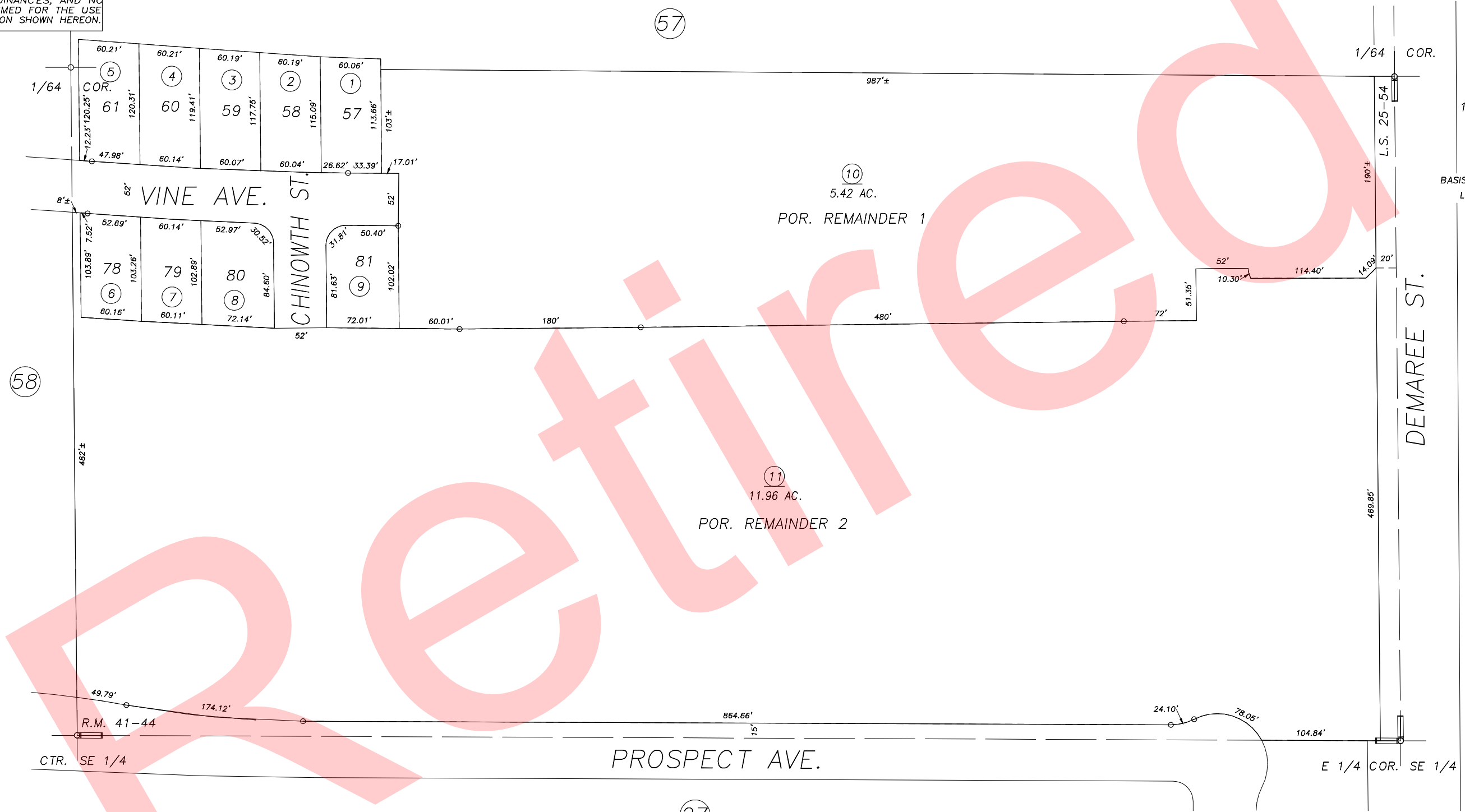
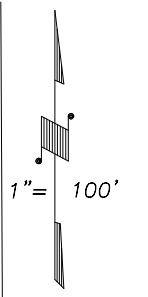
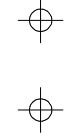


S1/2 OF NE1/4 OF SE1/4 SEC.23, T.18S., R.24E., M.D.B&M

Tax Area Codes 077-59  
006-200

**DISCLAIMER**  
THIS MAP WAS PREPARED FOR LOCAL PROPERTY ASSESSMENT PURPOSES ONLY AND THE PARCELS SHOWN HEREON MAY NOT COMPLY WITH STATE AND LOCAL SUBDIVISION ORDINANCES, AND NO LIABILITY IS ASSUMED FOR THE USE OF THE INFORMATION SHOWN HEREON.



POR. RECORD OF SURVEY, L.S. 25-54,  
POR. SILVER OAKS, UNIT NO. 1, R.M. 41-44

CITY OF VISALIA  
ASSESSOR'S MAPS BK.077 , PG.59  
COUNTY OF TULARE, CALIFORNIA, U.S.A.

NOTE: Assessor's Parcel Numbers Shown in Circles (1) (123)  
Assessor's Block Numbers Shown in Elipses (57) (58) (27) (Bk. 089)

|              |            |      |
|--------------|------------|------|
| 2005-0067686 | 01/31/2006 | MLC  |
| REVISION     | DATE       | TECH |