

N1/2 OF SE1/4 OF SE1/4 SEC.14, T.18S., R.24E., M.D.B.&M.

Tax Area Codes 077-61

153-015

006-215

DISCLAIMER

THIS MAP WAS PREPARED FOR LOCAL PROPERTY ASSESSMENT PURPOSES ONLY AND THE PARCELS SHOWN HEREON MAY NOT COMPLY WITH STATE AND LOCAL SUBDIVISION ORDINANCES, AND NO LIABILITY IS ASSUMED FOR THE USE OF THE INFORMATION SHOWN HEREON.

CTR. SE. 1/4

E. 1/4 COR.

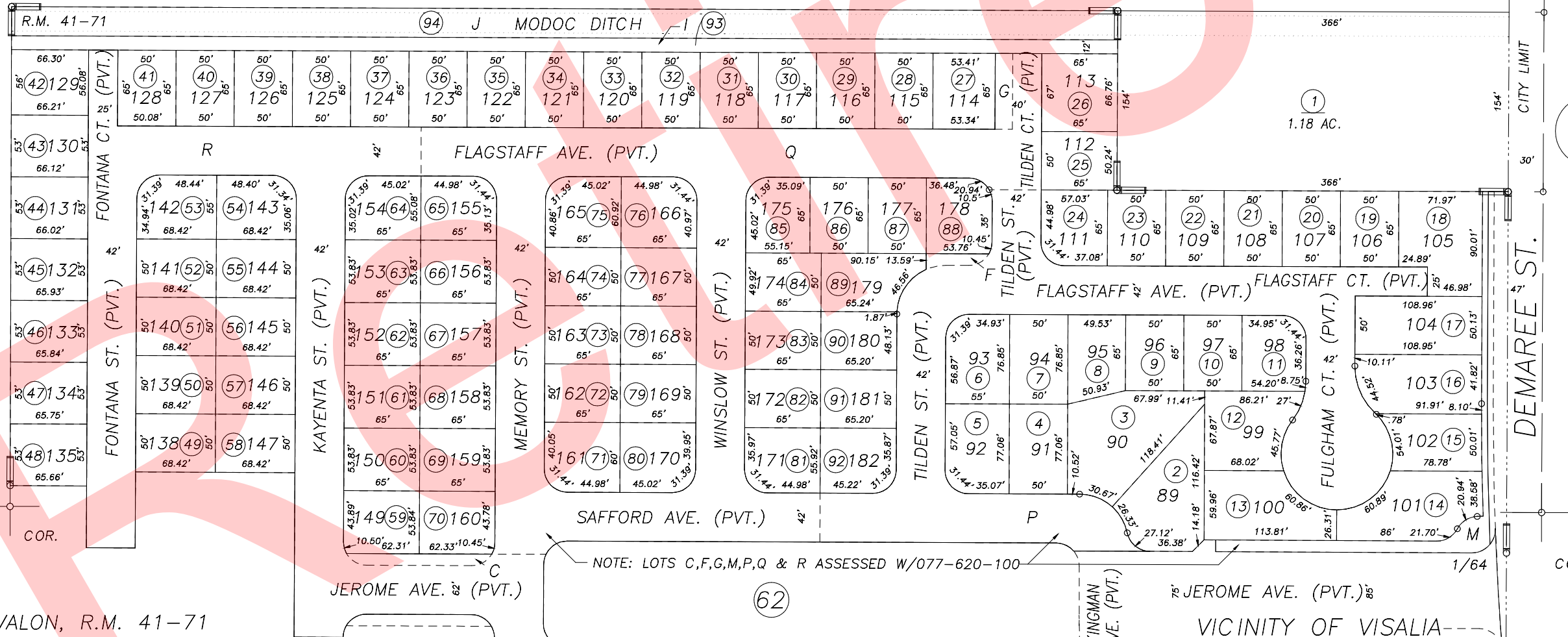
SE. 1/4

1" = 100'

BASIS OF BEARINGS:  
R.M. 41-71

06

06



Bk. 078

NOTE: LOTS C,F,G,M,P,Q & R ASSESSED W/077-620-100

POR. AVALON, R.M. 41-71

VICINITY OF VISALIA  
ASSESSOR'S MAPS BK.077 , PG.61  
COUNTY OF TULARE, CALIFORNIA, U.S.A.

NOTE: Assessor's Parcel Numbers Shown in Circles	077	123	2005-0110924	03/21/2006	JRS
Assessor's Block Numbers Shown in Elipses	077	123	REVISION	DATE	TECH