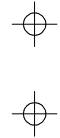


N1/2 OF NW1/4 OF NE1/4 SEC.23, T.18S., R.24E., M.D.B.&M.

Tax Area Codes 077-67
006-215

DISCLAIMER
THIS MAP WAS PREPARED FOR LOCAL PROPERTY ASSESSMENT PURPOSES ONLY AND THE PARCELS SHOWN HEREON MAY NOT COMPLY WITH STATE AND LOCAL SUBDIVISION ORDINANCES, AND NO LIABILITY IS ASSUMED FOR THE USE OF THE INFORMATION SHOWN HEREON.

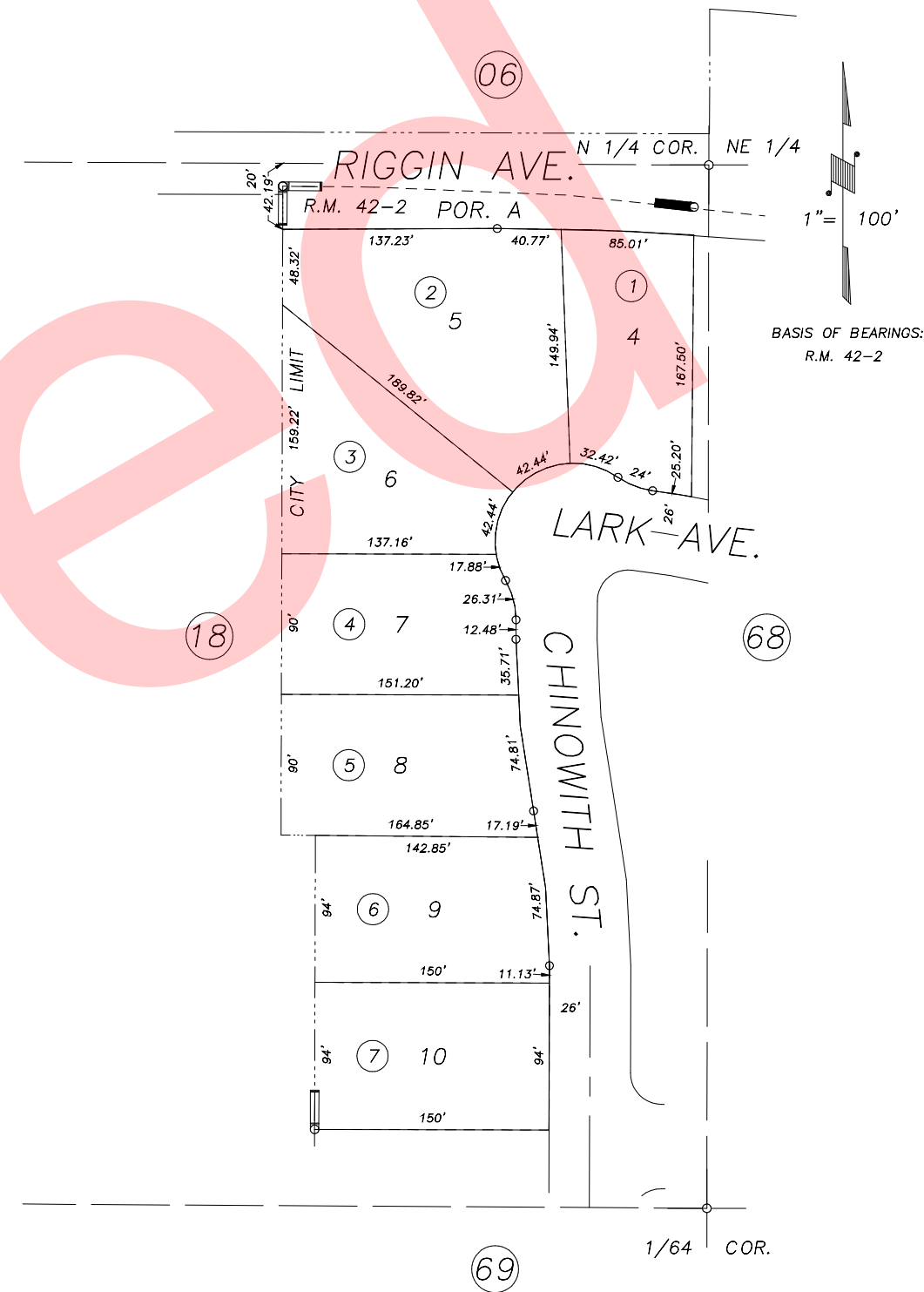


N.1/4 COR.



1/64 COR.

POR. VALLEY PALMS, R.M. 42-2



Draft

CITY OF VISALIA
ASSESSOR'S MAPS BK.077 , PG.67
COUNTY OF TULARE, CALIFORNIA, U.S.A.

NOTE: Assessor's Parcel Numbers Shown in Circles (1) 123
Assessor's Block Numbers Shown in Elipses

2006-0025279	09/11/2006	JRS
REVISION	DATE	TECH