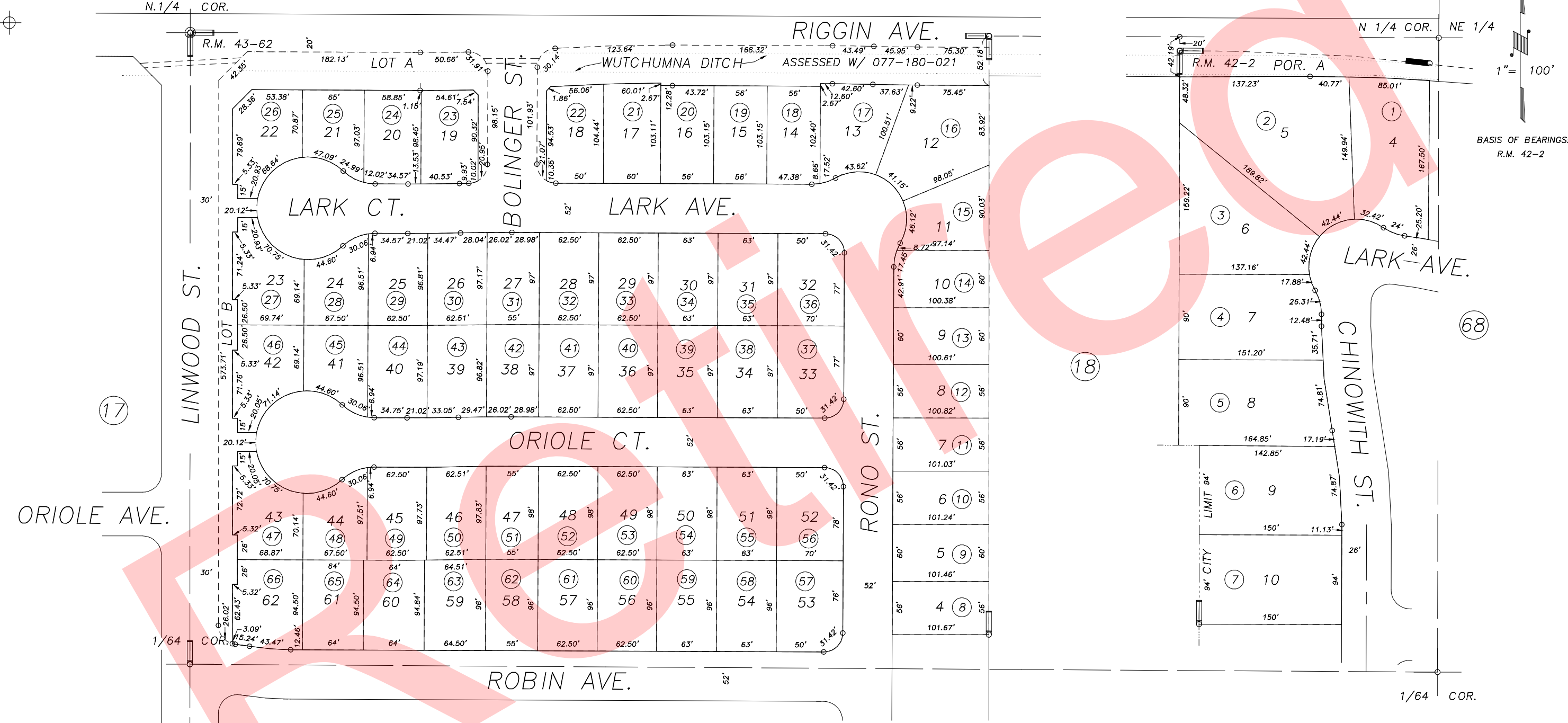


N1/2 OF NW1/4 OF NE1/4 SEC.23, T.18S., R.24E., M.D.B.&M.

Tax Area Codes 077-67
006-215

DISCLAIMER
THIS MAP WAS PREPARED FOR LOCAL PROPERTY ASSESSMENT PURPOSES ONLY AND THE PARCELS SHOWN HEREON MAY NOT COMPLY WITH STATE AND LOCAL SUBDIVISION ORDINANCES, AND NO LIABILITY IS ASSUMED FOR THE USE OF THE INFORMATION SHOWN HEREON. R & T CODE SEC. 327, 408.3, ETC



POR. VALLEY PALMS, R.M. 42-2
POR. TUMBLE ROSE SUBDIVISION, R.M. 43-62

CITY OF VISALIA
ASSESSOR'S MAPS BK.077 , PG.67
COUNTY OF TULARE, CALIFORNIA, U.S.A.

NOTE: Assessor's Parcel Numbers Shown in Circles
Assessor's Block Numbers Shown in Ellipses

123	2015-0048137	9/11/2015	NFL
	REVISION	DATE	TECH