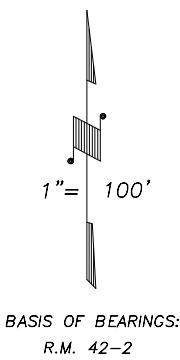
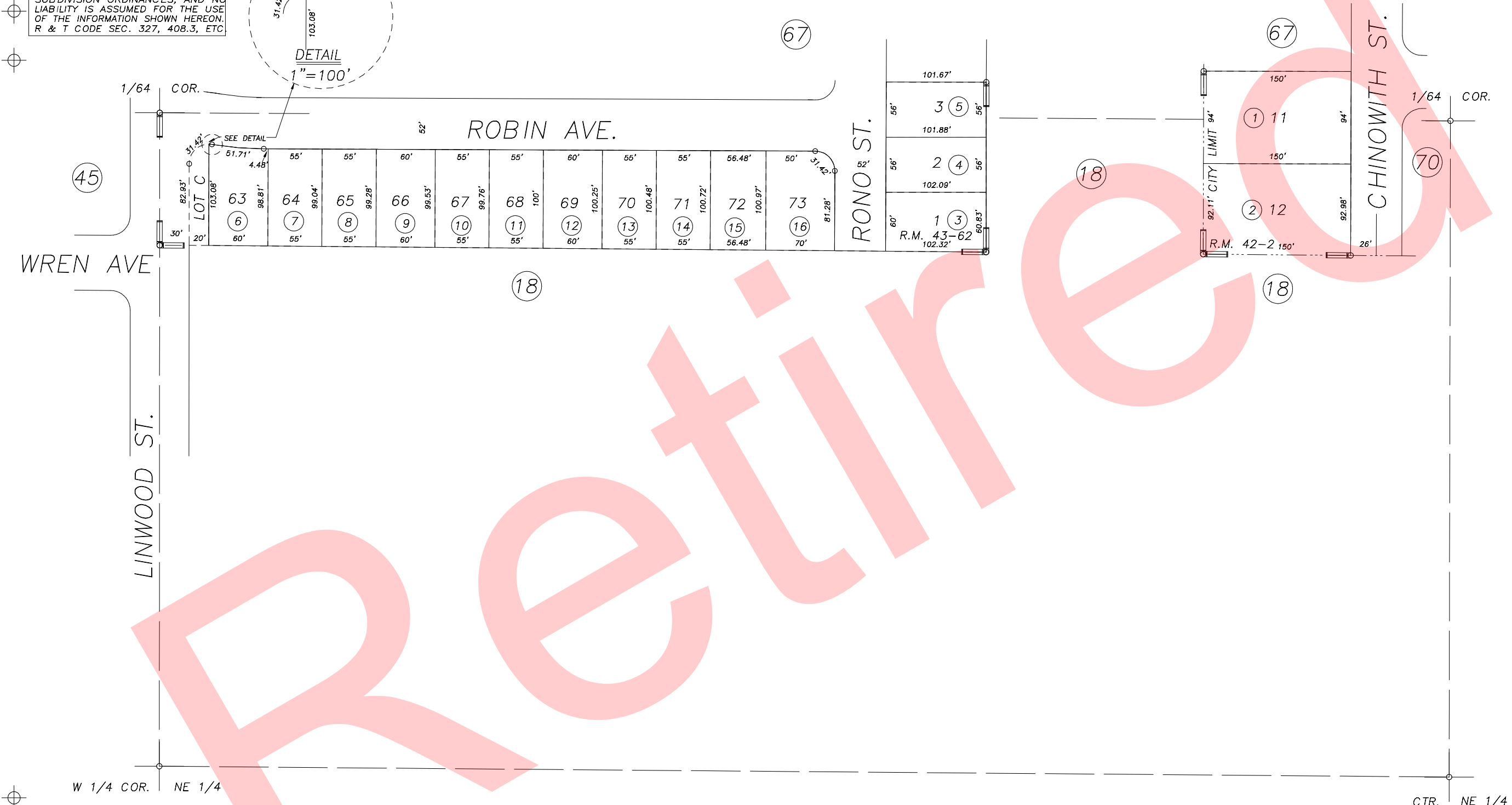
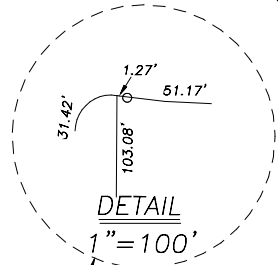


S1/2 OF NW1/4 OF NE1/4 SEC.23, T.18S., R.24E., M.D.B.&M.

Tax Area Codes 077-69
006-215

DISCLAIMER
THIS MAP WAS PREPARED FOR LOCAL PROPERTY ASSESSMENT PURPOSES ONLY AND THE PARCELS SHOWN HEREON MAY NOT COMPLY WITH STATE AND LOCAL SUBDIVISION ORDINANCES, AND NO LIABILITY IS ASSUMED FOR THE USE OF THE INFORMATION SHOWN HEREON. R & T CODE SEC. 327, 408.3, ETC



POR VALLEY PALMS, R.M. 42-2
POR TUMBLE ROSE SUBDIVISION, R.M. 43-62

CITY OF VISALIA
ASSESSOR'S MAPS BK.077 , PG.69
COUNTY OF TULARE, CALIFORNIA, U.S.A.

NOTE: Assessor's Parcel Numbers Shown in Circles (1) (123)
Assessor's Block Numbers Shown in Elipses (1) (123)

2015-0048137	09/11/2015	NFL
REVISION	DATE	TECH