

S1/2 OF SW1/4 OF NW1/4 SEC.22, T.18S., R.24E., M.D.B.&M.

Tax Area Codes 077-71

006-062

006-215

DISCLAIMER
THIS MAP WAS PREPARED FOR LOCAL PROPERTY ASSESSMENT PURPOSES ONLY AND THE PARCELS SHOWN HEREON MAY NOT COMPLY WITH STATE AND LOCAL SUBDIVISION ORDINANCES, AND NO LIABILITY IS ASSUMED FOR THE USE OF THE INFORMATION SHOWN HEREON.

64

FERGUSON AVE.

1/64 COR.

1" = 100'

BASIS OF BEARINGS:
R.M. 43-22

CITY OF VISALIA
FIREHOUSE

VISALIA UNIFIED SCHOOL DISTRICT

POR. 1

7
5.46 AC.

8
10.33 AC.

DENTON ST.

55

20

SHIRK RD.

(RD. 92)

595'±

497'±

662.16'

P.M. 39-78

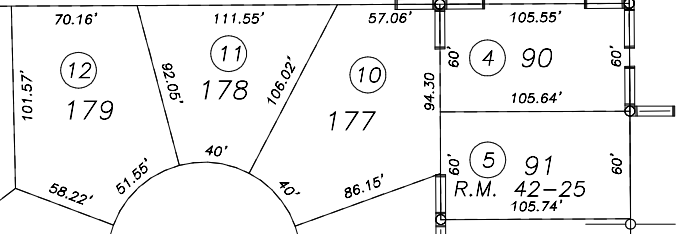
R.M. 43-22

580.41'

9
1.58 AC. POR. REMAINDER

L.S. 28-13

534'±



S1/4 COR. NW1/4

POR. PARCEL MAP 3875, P.M. 39-78
RECORD OF SURVEY, L.S. 28-13
POR. EAGLE CREEK NO. 2, R.M. 42-25
POR. EAGLE CREEK NO. 3, R.M. 43-22

CITY OF VISALIA
ASSESSOR'S MAPS BK.077 , PG.71
COUNTY OF TULARE, CALIFORNIA, U.S.A.

75

NOTE: Assessor's Parcel Numbers Shown in Circles (1) (123)
Assessor's Block Numbers Shown in Elipses

2012-0065283	10/29/2012	NFL
REVISION	DATE	TECH