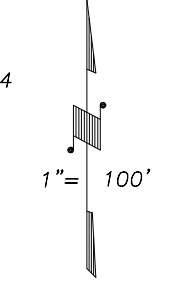


N1/2 OF NW1/4 OF SW1/4 SEC.22, T.18S., R.24E., M.D.B.&M.

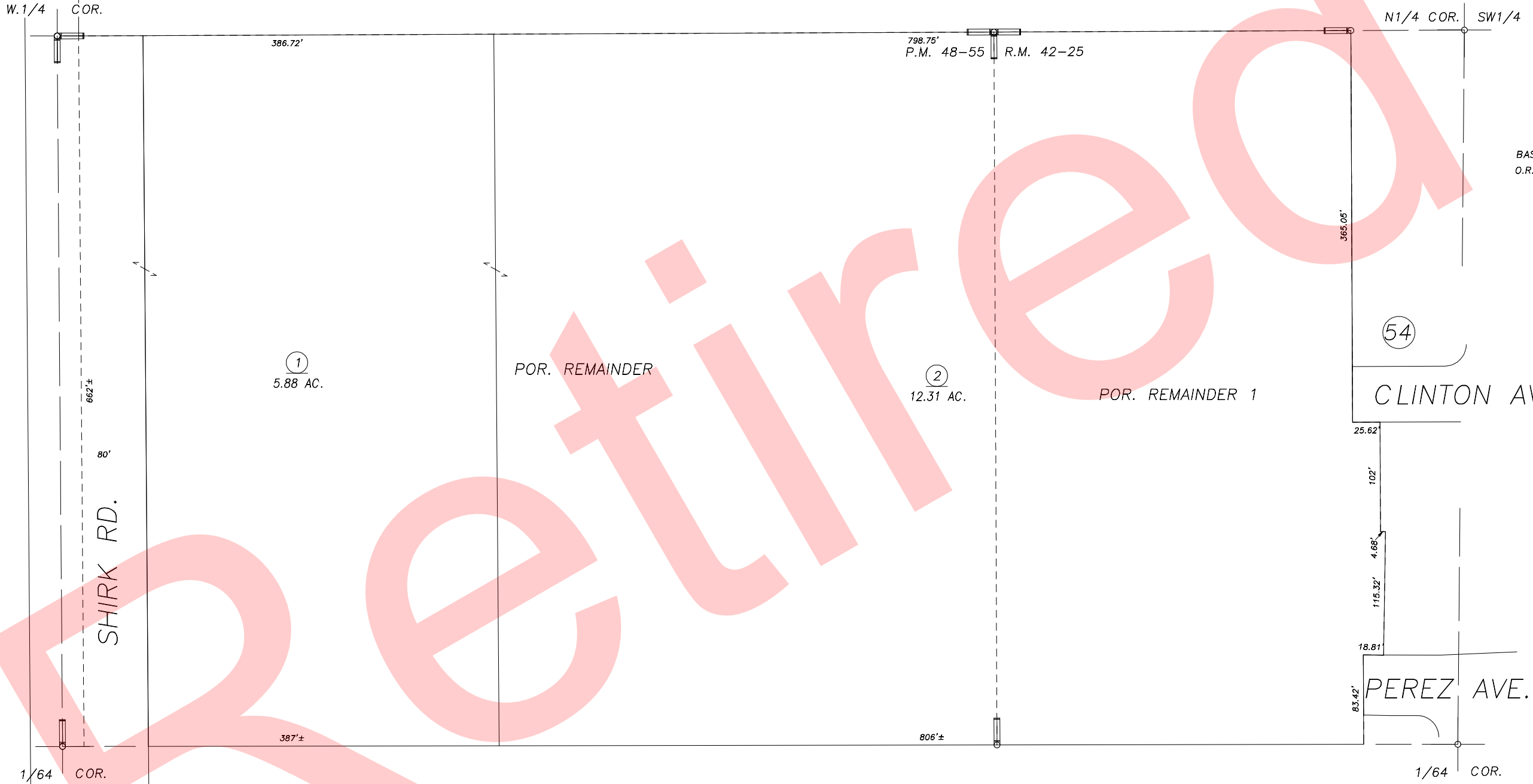
Tax Area Codes 077-75
006-061
006-197

DISCLAIMER
THIS MAP WAS PREPARED FOR LOCAL PROPERTY ASSESSMENT PURPOSES ONLY AND THE PARCELS SHOWN HEREON MAY NOT COMPLY WITH STATE AND LOCAL SUBDIVISION ORDINANCES, AND NO LIABILITY IS ASSUMED FOR THE USE OF THE INFORMATION SHOWN HEREON.

71



BASIS OF BEARINGS:
O.R. 2007-0110964



13

1
5.88 AC.

POR. REMAINDER

2
12.31 AC.

POR. REMAINDER 1

54

CLINTON AVE.

PEREZ AVE.

74

POR. PARCEL MAP NO. 4750, P.M. 48-55
POR. EAGLE CREEK NO. 2, R.M. 42-25

CITY OF VISALIA
ASSESSOR'S MAPS BK.077 , PG.75
COUNTY OF TULARE, CALIFORNIA, U.S.A.

NOTE: Assessor's Parcel Numbers Shown in Circles 1 123
Assessor's Block Numbers Shown in Elipses

2007-0110964	07/15/2008	MLC
REVISION	DATE	TECH