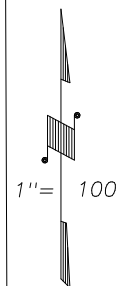
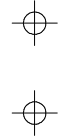


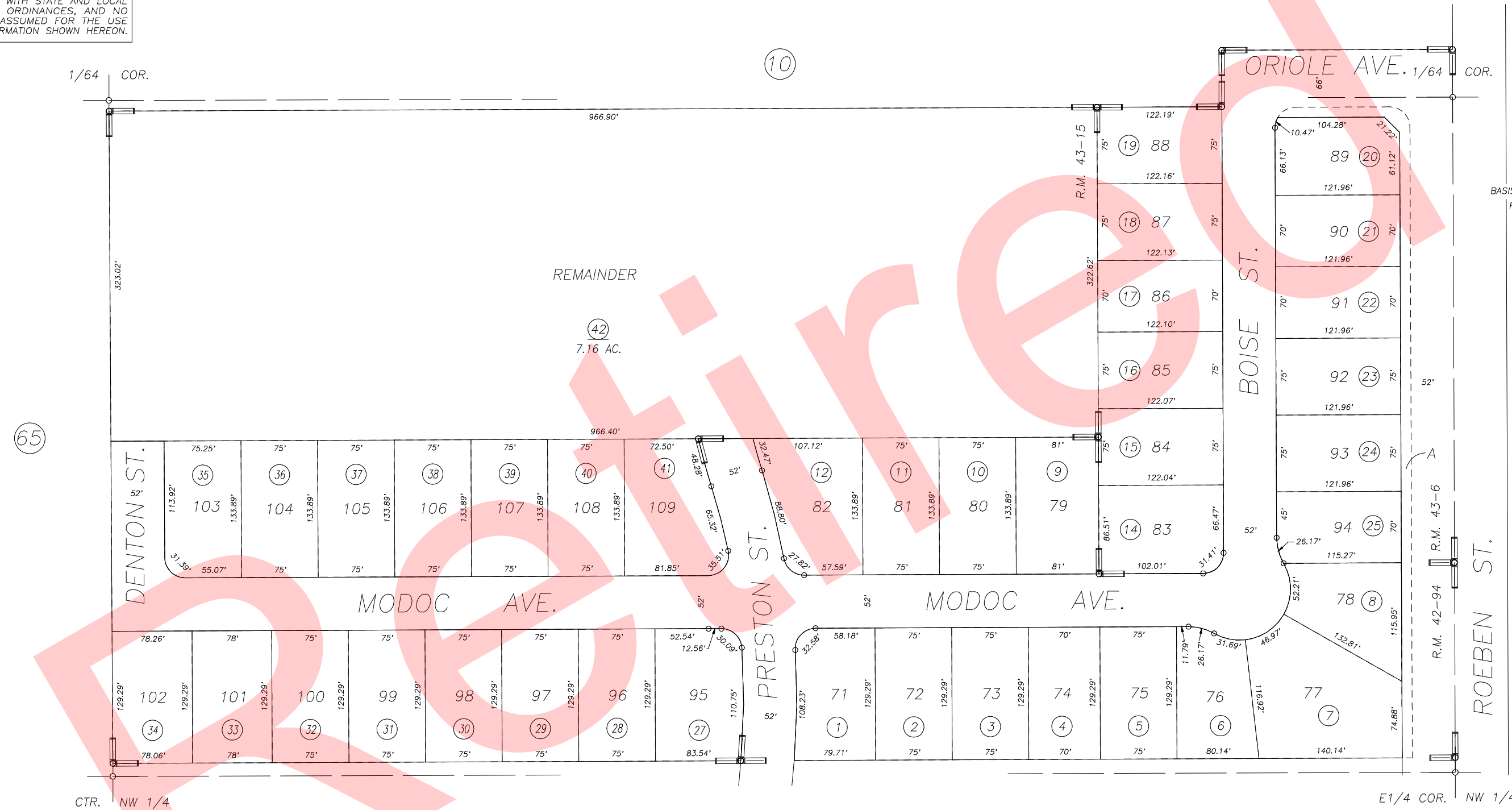
S1/2 OF NE1/4 OF NW1/4 SEC.22, T.18S., R.24E., M.D.B.&M.

Tax Area Codes 077-76  
006-215

**DISCLAIMER**  
THIS MAP WAS PREPARED FOR LOCAL PROPERTY ASSESSMENT PURPOSES ONLY AND THE PARCELS SHOWN HEREON MAY NOT COMPLY WITH STATE AND LOCAL SUBDIVISION ORDINANCES, AND NO LIABILITY IS ASSUMED FOR THE USE OF THE INFORMATION SHOWN HEREON.



BASIS OF BEARINGS:  
R.M. 42-94



PHEASANT RIDGE UNIT NO. 3A, R.M. 42-94  
PHEASANT RIDGE UNIT NO. 3B, R.M. 43-6  
PHEASANT RIDGE UNIT NO. 3C, R.M. 43-15

CITY OF VISALIA  
ASSESSOR'S MAPS BK. 077 , PG. 76  
COUNTY OF TULARE, CALIFORNIA, U.S.A.

NOTE: Assessor's Parcel Numbers Shown in Circles (1) (123)  
Assessor's Block Numbers Shown in Ellipses

2010-0078577	03/17/2011	CBT
REVISION	DATE	TECH