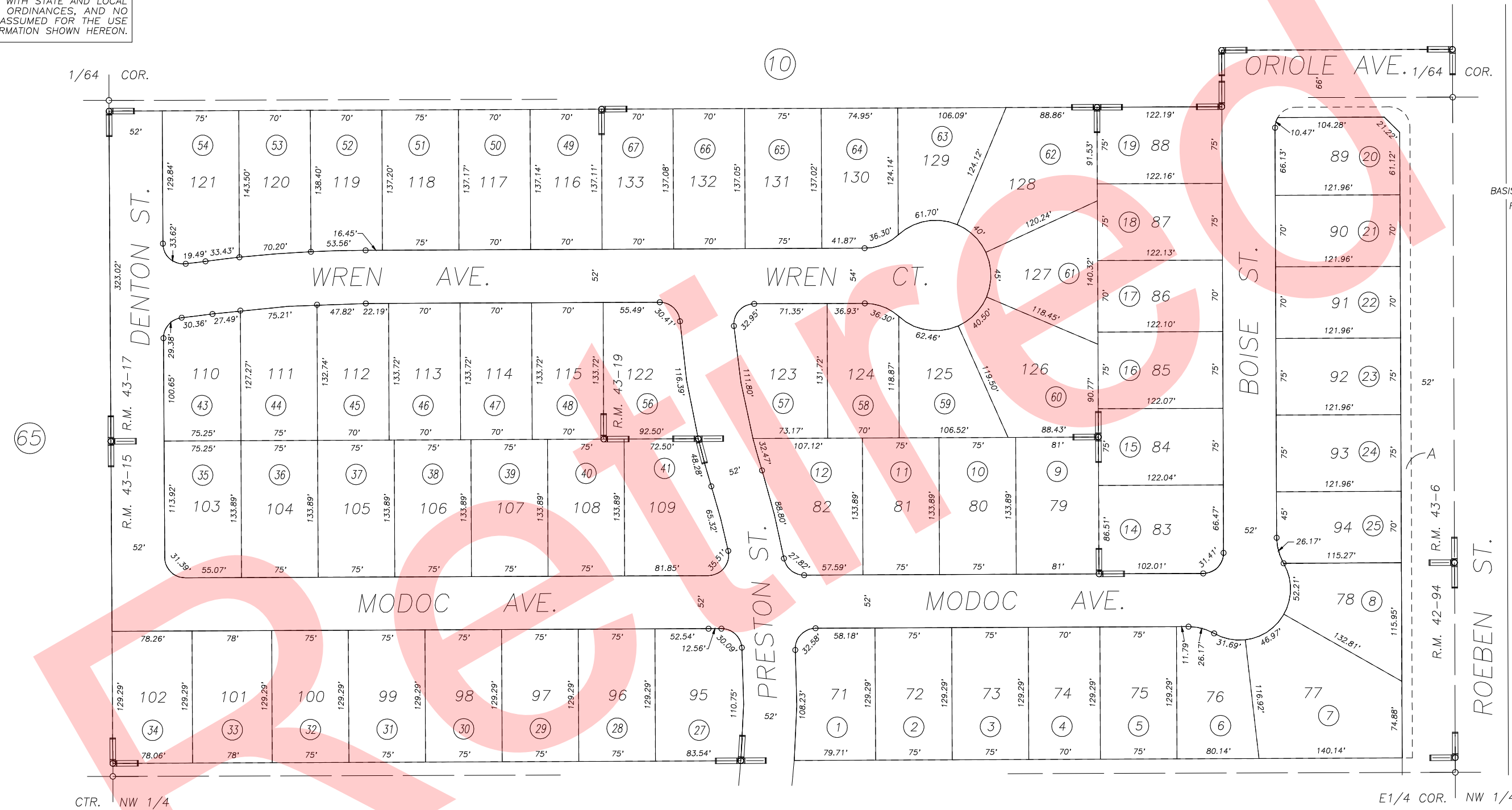
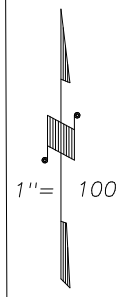
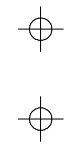


S1/2 OF NE1/4 OF NW1/4 SEC.22, T.18S., R.24E., M.D.B.&M.

Tax Area Codes 077-76
006-215

DISCLAIMER
THIS MAP WAS PREPARED FOR LOCAL PROPERTY ASSESSMENT PURPOSES ONLY AND THE PARCELS SHOWN HEREON MAY NOT COMPLY WITH STATE AND LOCAL SUBDIVISION ORDINANCES, AND NO LIABILITY IS ASSUMED FOR THE USE OF THE INFORMATION SHOWN HEREON.



PHEASANT RIDGE UNIT NO. 3A, R.M. 42-94
 PHEASANT RIDGE UNIT NO. 3B, R.M. 43-6
 PHEASANT RIDGE UNIT NO. 3C, R.M. 43-15
 PHEASANT RIDGE UNIT NO. 3D, R.M. 43-17
 PHEASANT RIDGE UNIT NO. 3E, R.M. 43-19

CITY OF VISALIA
 ASSESSOR'S MAPS BK. 077 , PG. 76
 COUNTY OF TULARE, CALIFORNIA, U.S.A.

NOTE: Assessor's Parcel Numbers Shown in Circles
 Assessor's Block Numbers Shown in Ellipses

2011-0075319	12/27/2011	JLC
REVISION	DATE	TECH

123