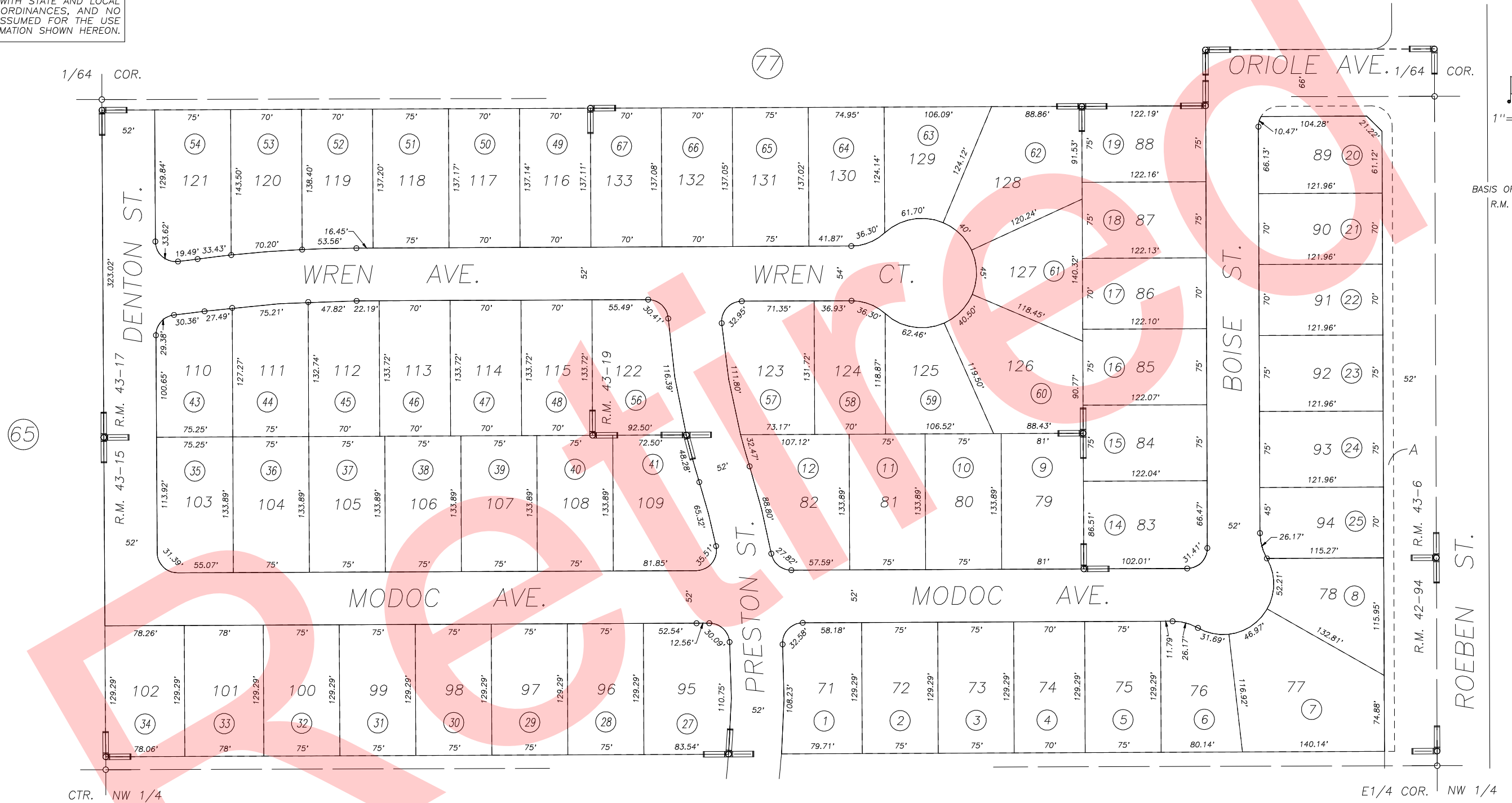
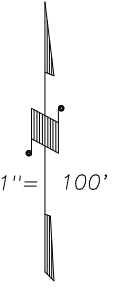
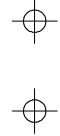


S1/2 OF NE1/4 OF NW1/4 SEC.22, T.18S., R.24E., M.D.B.&M.

Tax Area Codes 077-76
006-215

DISCLAIMER
THIS MAP WAS PREPARED FOR LOCAL PROPERTY ASSESSMENT PURPOSES ONLY AND THE PARCELS SHOWN HEREON MAY NOT COMPLY WITH STATE AND LOCAL SUBDIVISION ORDINANCES, AND NO LIABILITY IS ASSUMED FOR THE USE OF THE INFORMATION SHOWN HEREON.



BASIS OF BEARINGS:
R.M. 42-94

PHEASANT RIDGE UNIT NO. 3A, R.M. 42-94
PHEASANT RIDGE UNIT NO. 3B, R.M. 43-6
PHEASANT RIDGE UNIT NO. 3C, R.M. 43-15
PHEASANT RIDGE UNIT NO. 3D, R.M. 43-17
PHEASANT RIDGE UNIT NO. 3E, R.M. 43-19

CITY OF VISALIA
ASSESSOR'S MAPS BK. 077 , PG. 76
COUNTY OF TULARE, CALIFORNIA, U.S.A.

NOTE: Assessor's Parcel Numbers Shown in Circles (1) (123)
Assessor's Block Numbers Shown in Ellipses

UPDATE ADJ PG	07/17/2012	CMB
REVISION	DATE	TECH