

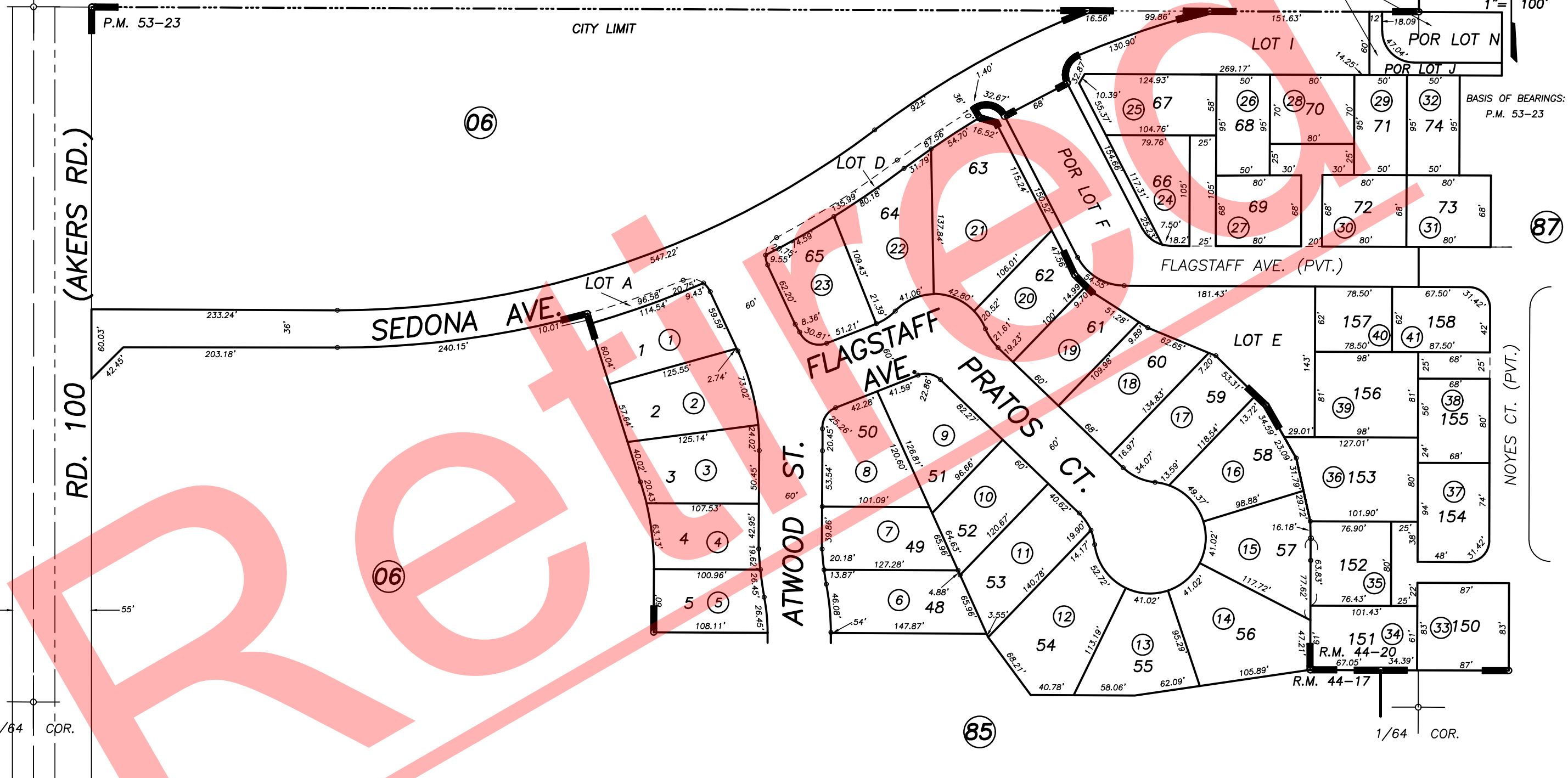
DISCLAIMER
THIS MAP WAS PREPARED FOR LOCAL PROPERTY ASSESSMENT PURPOSES ONLY AND THE PARCELS SHOWN HEREON MAY NOT COMPLY WITH STATE AND LOCAL SUBDIVISION ORDINANCES, AND NO LIABILITY IS ASSUMED FOR THE USE OF THE INFORMATION SHOWN HEREON. R & T CODE SEC. 327, 408.3, ETC.

NOTE: LOTS E,F, and I TO BE ASSESSED WITH 077-870-077
NOTE: LOTS J AND N TO BE ASSESSED WITH 077-870-076

W1/4 COR. SW1/4

CTR. SW1/4

1" = 100'



POR. PARCEL MAP NO. 5216, P.M. 53-23
POR. LOWERY WEST, PHASE 1A, R.M. 44-17
POR. LOWERY WEST, PHASE 1B, R.M. 44-20

CITY OF VISALIA
ASSESSOR'S MAPS BK. 077 , PG. 86
COUNTY OF TULARE, CALIFORNIA, U.S.A.