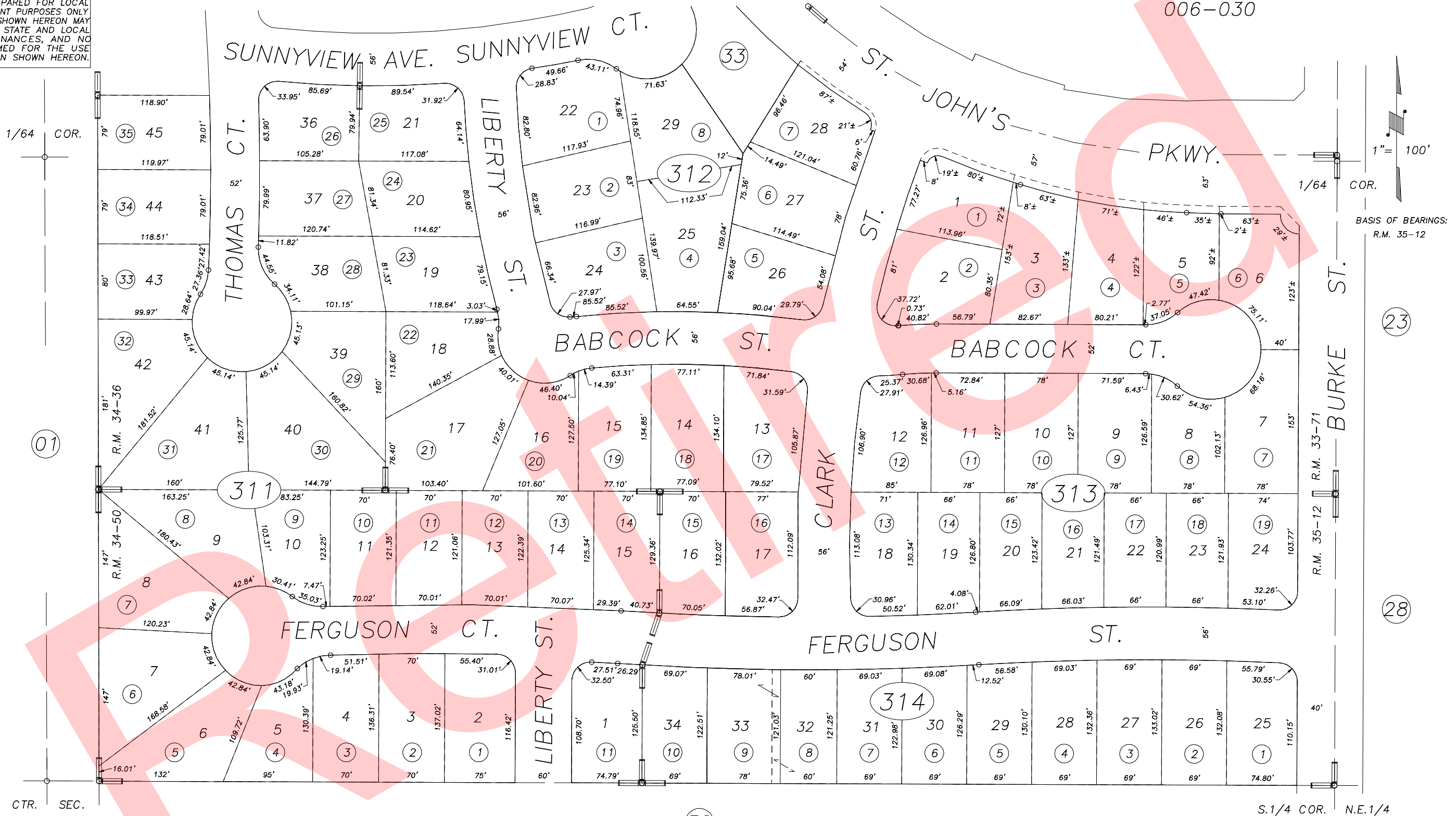


**DISCLAIMER**  
 THIS MAP WAS PREPARED FOR LOCAL PROPERTY ASSESSMENT PURPOSES ONLY AND THE PARCELS SHOWN HEREON MAY NOT COMPLY WITH STATE AND LOCAL SUBDIVISION ORDINANCES, AND NO LIABILITY IS ASSUMED FOR THE USE OF THE INFORMATION SHOWN HEREON.

S1/2 OF SW1/4 OF NE1/4 SEC.20, T.18S., R.25E., M.D.B.&M.

Tax Area Codes 091-31  
 006-030



CTR. SEC.  
 POR. ISLAND OAKS SUB., UNIT NO.1, R.M. 33-71  
 POR. ISLAND OAKS SUB., UNIT NO.1, R.M. 34-36  
 VILLAGE OAKS SUB., UNIT NO.1, R.M. 34-50  
 VILLAGE OAKS SUB., UNIT NO.2, R.M. 35-12

CITY OF VISALIA  
 ASSESSOR'S MAPS BK.091 , PG.31  
 COUNTY OF TULARE, CALIFORNIA, U.S.A.

NOTE: Assessor's Parcel Numbers Shown in Circles ① 123  
 Assessor's Block Numbers Shown in Ellipses

2001-0030997	06/24/2003	PHN
REVISION	DATE	TECH