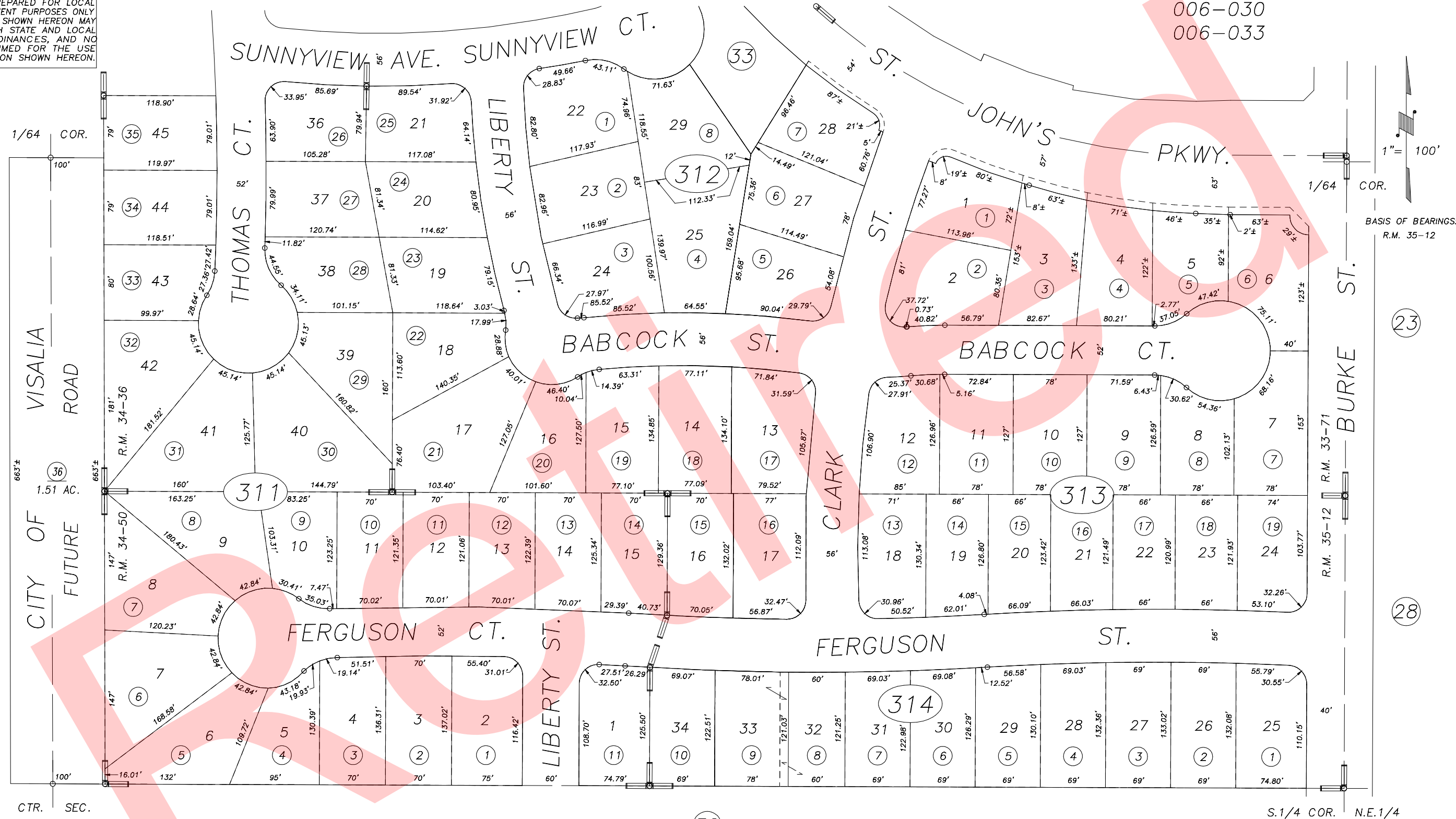


**DISCLAIMER**  
 THIS MAP WAS PREPARED FOR LOCAL PROPERTY ASSESSMENT PURPOSES ONLY AND THE PARCELS SHOWN HEREON MAY NOT COMPLY WITH STATE AND LOCAL SUBDIVISION ORDINANCES, AND NO LIABILITY IS ASSUMED FOR THE USE OF THE INFORMATION SHOWN HEREON.

S1/2 OF SW1/4 OF NE1/4 SEC.20, T.18S., R.25E., M.D.B.&M.

Tax Area Codes 091-31  
 006-030  
 006-033



CTR. SEC.  
 POR. ISLAND OAKS SUB., UNIT NO.1, R.M. 33-71  
 POR. ISLAND OAKS SUB., UNIT NO.1, R.M. 34-36  
 VILLAGE OAKS SUB., UNIT NO.1, R.M. 34-50  
 VILLAGE OAKS SUB., UNIT NO.2, R.M. 35-12

CITY OF VISALIA  
 ASSESSOR'S MAPS BK.091 , PG.31  
 COUNTY OF TULARE, CALIFORNIA, U.S.A.

NOTE: Assessor's Parcel Numbers Shown in Circles ① 123 Assessor's Block Numbers Shown in Ellipses ① 123

APN FOR ABAND RD 08/31/2007	PHN
REVISION	DATE TECH