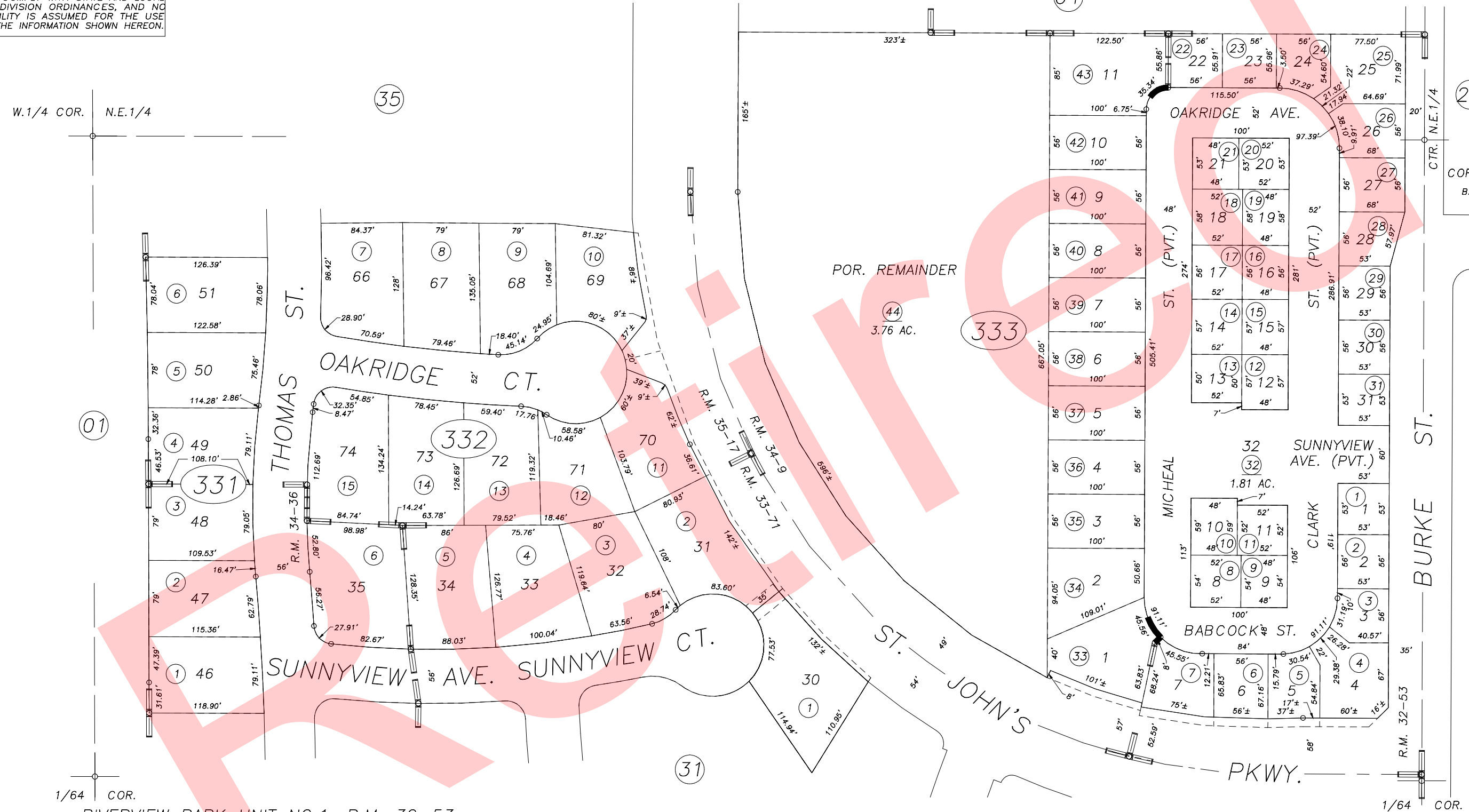
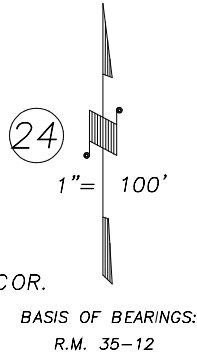


DISCLAIMER
 THIS MAP WAS PREPARED FOR LOCAL PROPERTY ASSESSMENT PURPOSES ONLY AND THE PARCELS SHOWN HEREON MAY NOT COMPLY WITH STATE AND LOCAL SUBDIVISION ORDINANCES, AND NO LIABILITY IS ASSUMED FOR THE USE OF THE INFORMATION SHOWN HEREON.

N1/2 OF SW1/4 OF NE1/4 SEC.20, T.18S., R.25E., M.D.B.&M.

Tax Area Codes 091-33
 006-030

W.1/4 COR. N.E.1/4



RIVERVIEW PARK UNIT NO.1, R.M. 32-53
 POR. ISLAND OAKS SUB., UNIT NO.1, R.M. 33-71
 POR. RIVERVIEW PARK UNIT NO.2, R.M. 34-9
 POR. ISLAND OAKS SUB., UNIT NO.2, R.M. 34-36
 POR. ISLAND OAKS SUB., UNIT NO.3, R.M. 35-17

CITY OF VISALIA
 ASSESSOR'S MAPS BK.091 , PG.33
 COUNTY OF TULARE, CALIFORNIA, U.S.A.

NOTE: Assessor's Parcel Numbers Shown in Circles (1) 123
 Assessor's Block Numbers Shown in Ellipses (1) 123

CAD CONVERSION	05/02/2003	PHN
REVISION	DATE	TECH