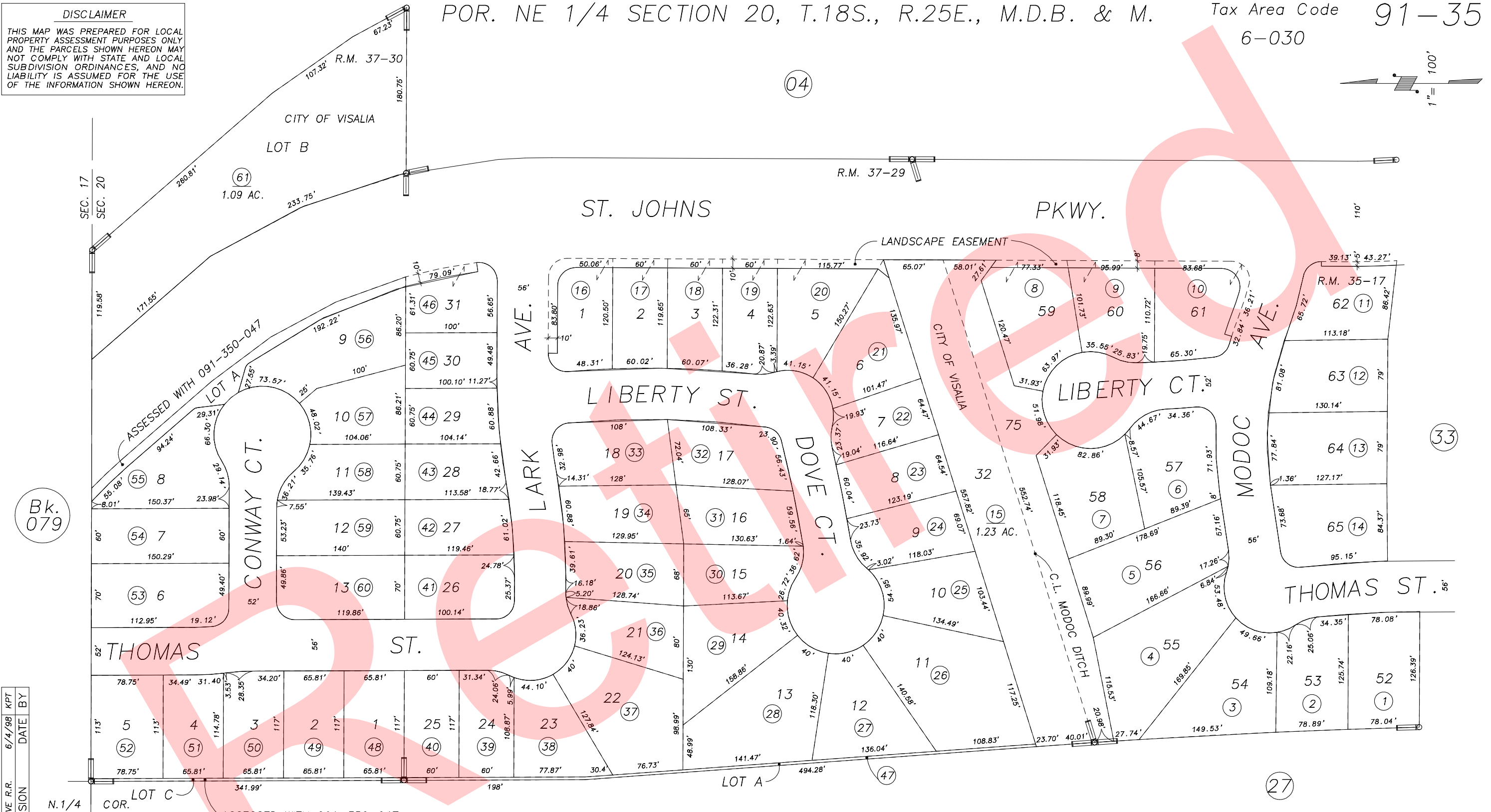
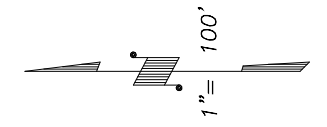


DISCLAIMER
 THIS MAP WAS PREPARED FOR LOCAL PROPERTY ASSESSMENT PURPOSES ONLY AND THE PARCELS SHOWN HEREON MAY NOT COMPLY WITH STATE AND LOCAL SUBDIVISION ORDINANCES, AND NO LIABILITY IS ASSUMED FOR THE USE OF THE INFORMATION SHOWN HEREON.

POR. NE 1/4 SECTION 20, T.18S., R.25E., M.D.B. & M.

Tax Area Code 91-35
 6-030



REMOVE R.R.	REVISION	DATE	KPT BY
		6/4/98	

ASSESSED WITH 091-350-047
 POR. ISLAND OAKS SUB. UNIT 3, R.M. 35-17
 ISLAND OAKS SUB. UNIT 4, R.M. 37-29
 ISLAND OAKS SUB. UNIT 5, R.M. 37-30

CITY OF VISALIA
 ASSESSOR'S MAPS BK. 091, PG. 35
 COUNTY OF TULARE, CALIF.

NOTE: Assessor's Block Numbers Shown in Ellipses
 Assessor's Parcel Numbers Shown in Circles

98/99