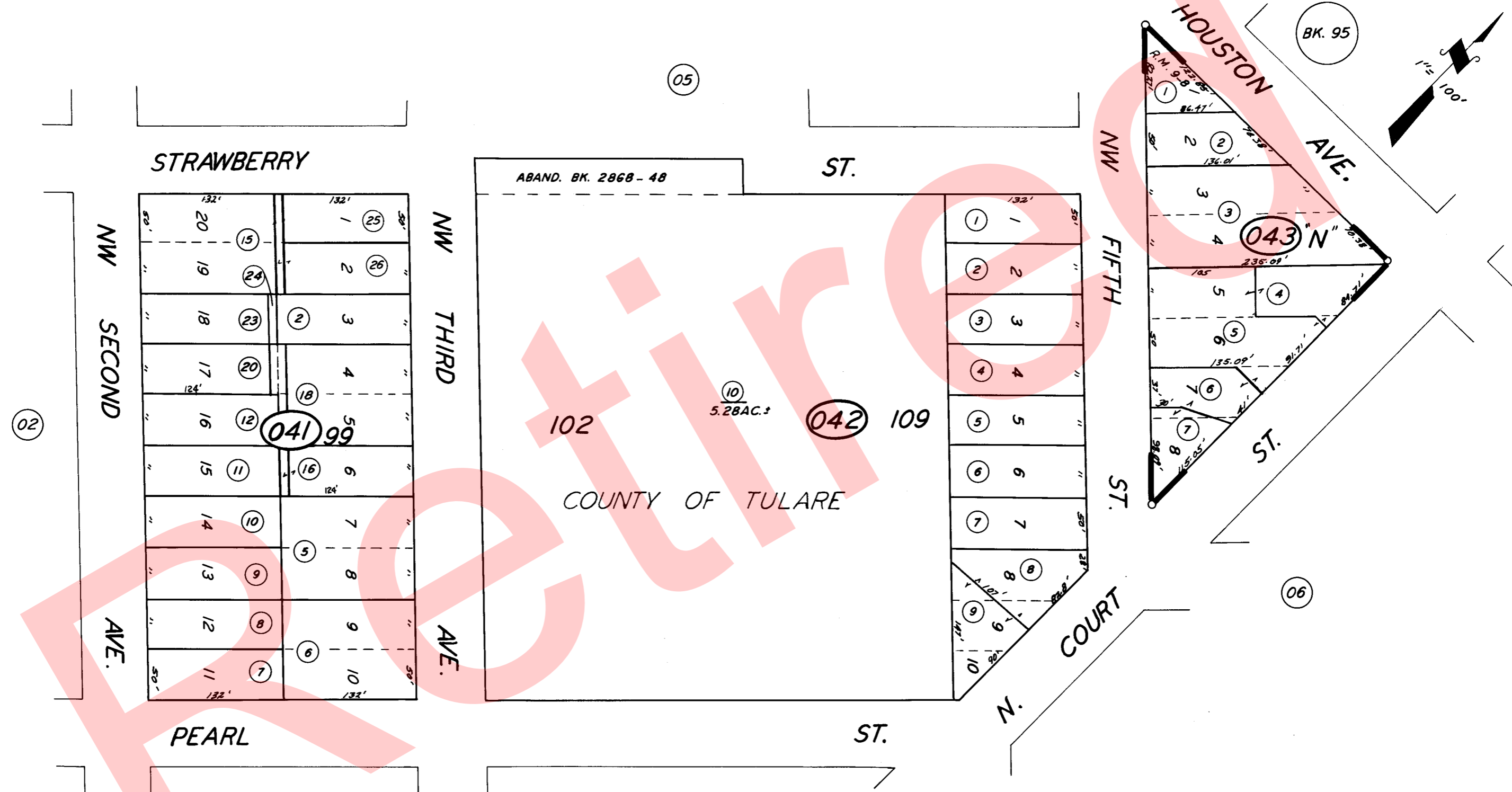


POR. NW 1/4 OF NW 1/4 SEC. 29, T.18S., R.25E., M.D.B. & M.

TAX CODE AREA 94-04
6-096



POR. AUGHINBAUGH'S ADD. R.M. 1-3. & 3-48
STEVEN'S SUB. BLK. "N" R.M. 9-8.

CITY OF VISALIA
ASSESSOR'S MAPS BK. 94, PG. 04.
COUNTY OF TULARE, CALIF.

NOTE — ASSESSOR'S BLOCK NUMBERS SHOWN IN ELLIPSES
ASSESSOR'S PARCEL NUMBERS SHOWN IN CIRCLES