

S1/2 OF NW1/4 OF NW1/4 SEC.29, T.18S., R.25E., M.D.B.&M.

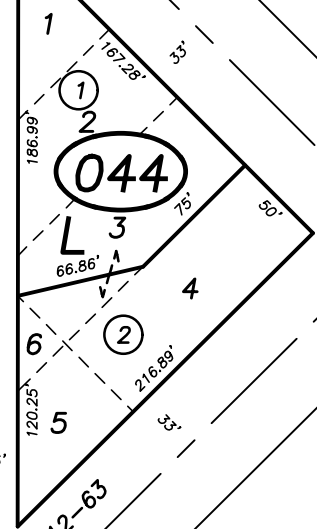
Tax Area Codes 094-04  
006-096

**DISCLAIMER**  
THIS MAP WAS PREPARED FOR LOCAL PROPERTY ASSESSMENT PURPOSES ONLY AND THE PARCELS SHOWN HEREON MAY NOT COMPLY WITH STATE AND LOCAL SUBDIVISION ORDINANCES, AND NO LIABILITY IS ASSUMED FOR THE USE OF THE INFORMATION SHOWN HEREON.

1/64

COR.

WEST ST.



Bk. 093

STRAWBERRY ST.

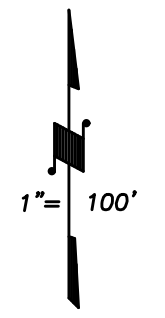
NW THIRD AVE.

SECOND AVE.

COMMUNITY CAMPUS  
CITY OF VISALIA

PEARL ST.

COURT ST.



BASIS OF BEARINGS:  
R.M. 40-25

W1/4 COR.

NW1/4

CTR.

NW1/4

POR. AUGHINBAUGH'S ADD., R.M. 1-3 & 3-48  
RECORD OF SURVEY, L.S. 12-63  
POR. PARCEL MAP NO. 4615, P.M. 47-20

CITY OF VISALIA  
ASSESSOR'S MAPS BK. 094 , PG. 04  
COUNTY OF TULARE, CALIFORNIA, U.S.A.

NOTE: Assessor's Parcel Numbers Shown in Circles ① 123  
Assessor's Block Numbers Shown in Elipses ① 042

2007-0030461	07/07/2010	JLC
REVISION	DATE	TECH