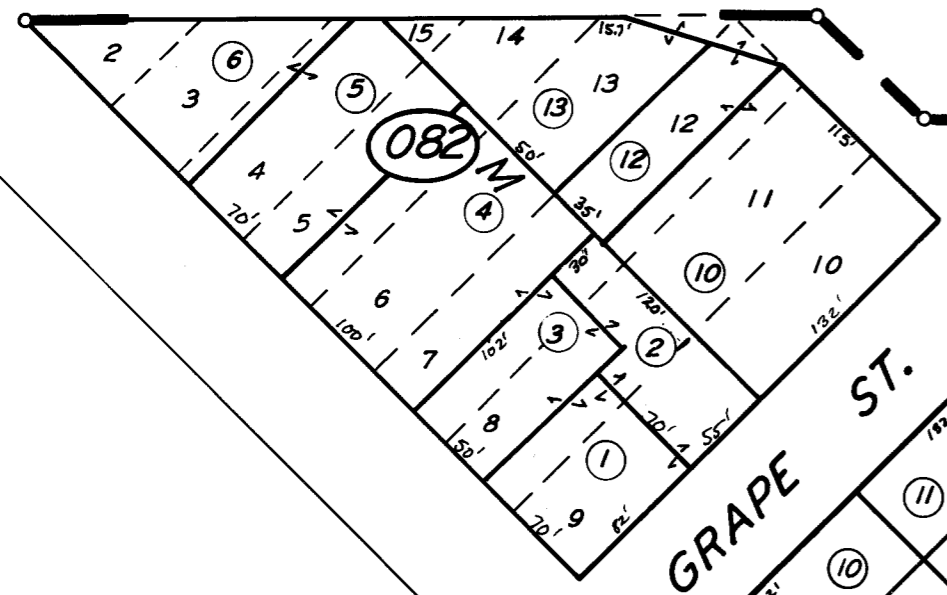


12

11

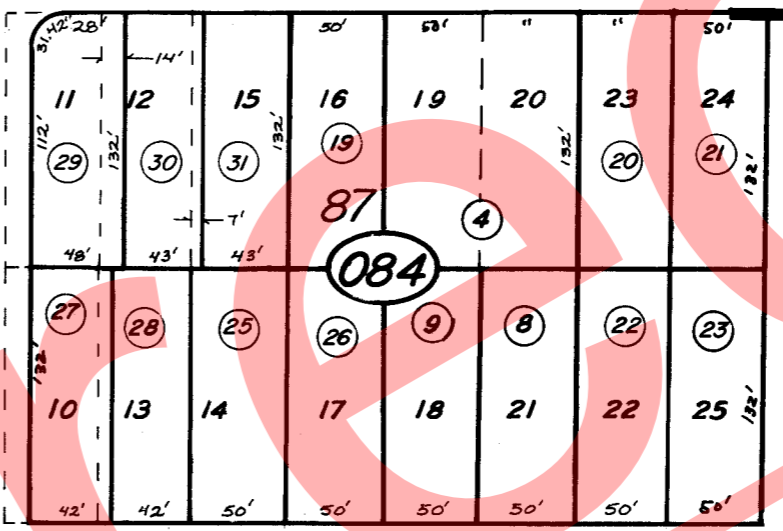


SANTA FE AVE.

POR. 87

083

DOUGLAS AVE.



E. GROVE ST.

GRAPE ST.

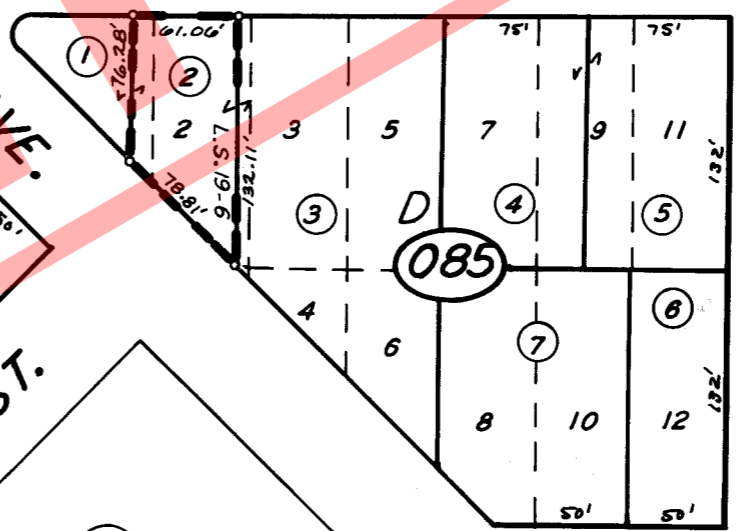
NE FIRST AVE.

N. BRIDGE ST.

NE SECOND AVE.

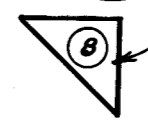
081

NE AVE.



GRANITE ST.

COMBINED WITH 085



POR. AUGHINBAUGH'S ADD. R.M. 1-3 & 3-48
RECORD OF SURVEY L.S. 19-6

ASSESSOR'S MAPS BK. 94 PG. 08
COUNTY OF TULARE, CALIF.

NOTE-ASSESSOR'S BLOCK NUMBERS SHOWN IN ELIPSES
ASSESSOR'S PARCEL NUMBERS SHOWN IN CIRCLES