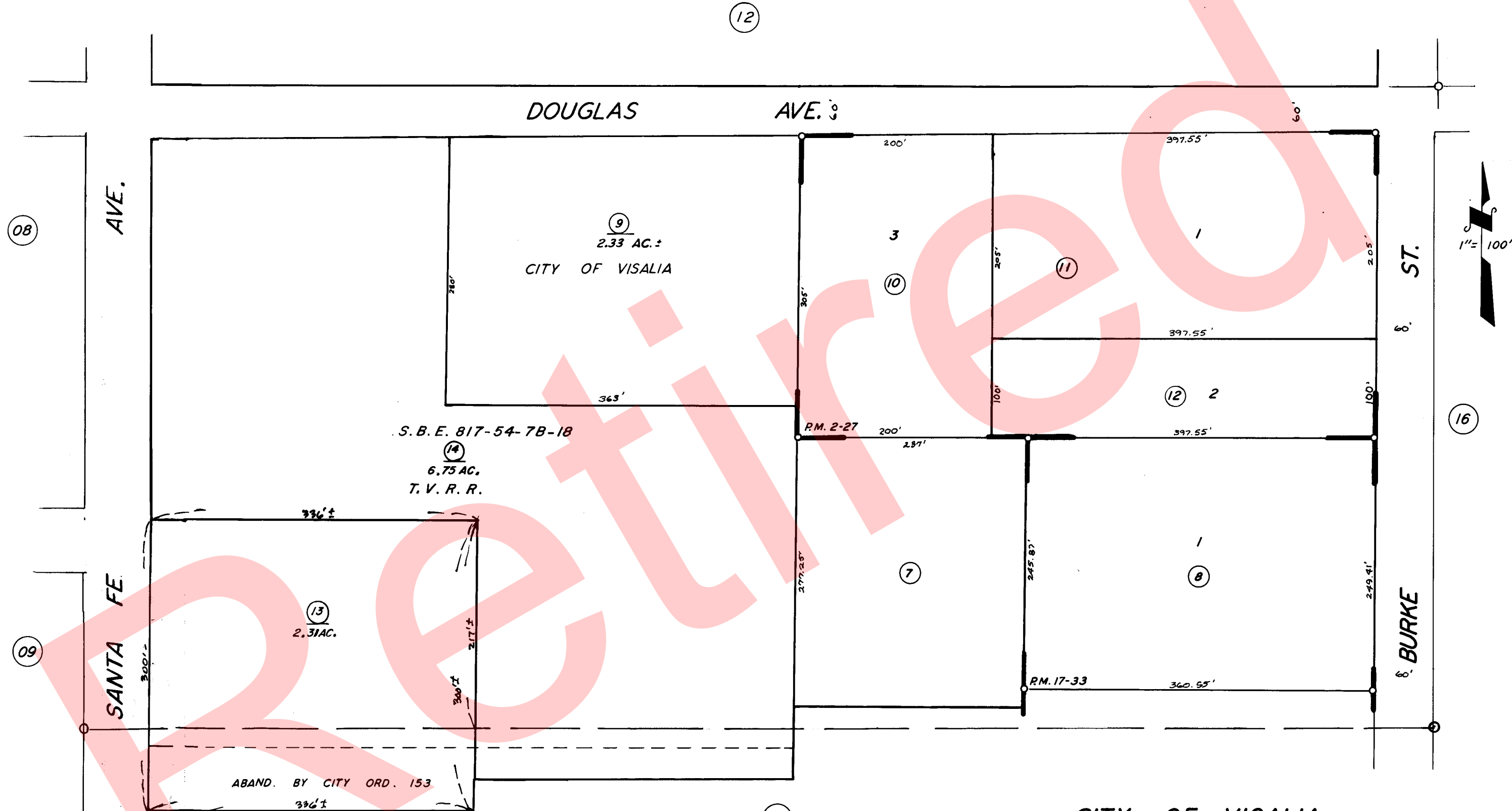


POR. SW 1/4 OF NE 1/4 SEC. 29, T.18S., R.25E., M. D. B. & M.

TAX CODE AREA 94-11  
6-096



PARCEL MAP 127, P.M. 2-27  
PARCEL MAP 1632, P.M. 17-33

CITY OF VISALIA  
ASSESSOR'S MAPS BK. 94, PG. 11.  
COUNTY OF TULARE, CALIF.

NOTE — ASSESSOR'S BLOCK NUMBERS SHOWN IN ELLIPSES  
ASSESSOR'S PARCEL NUMBERS SHOWN IN CIRCLES