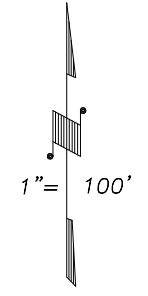
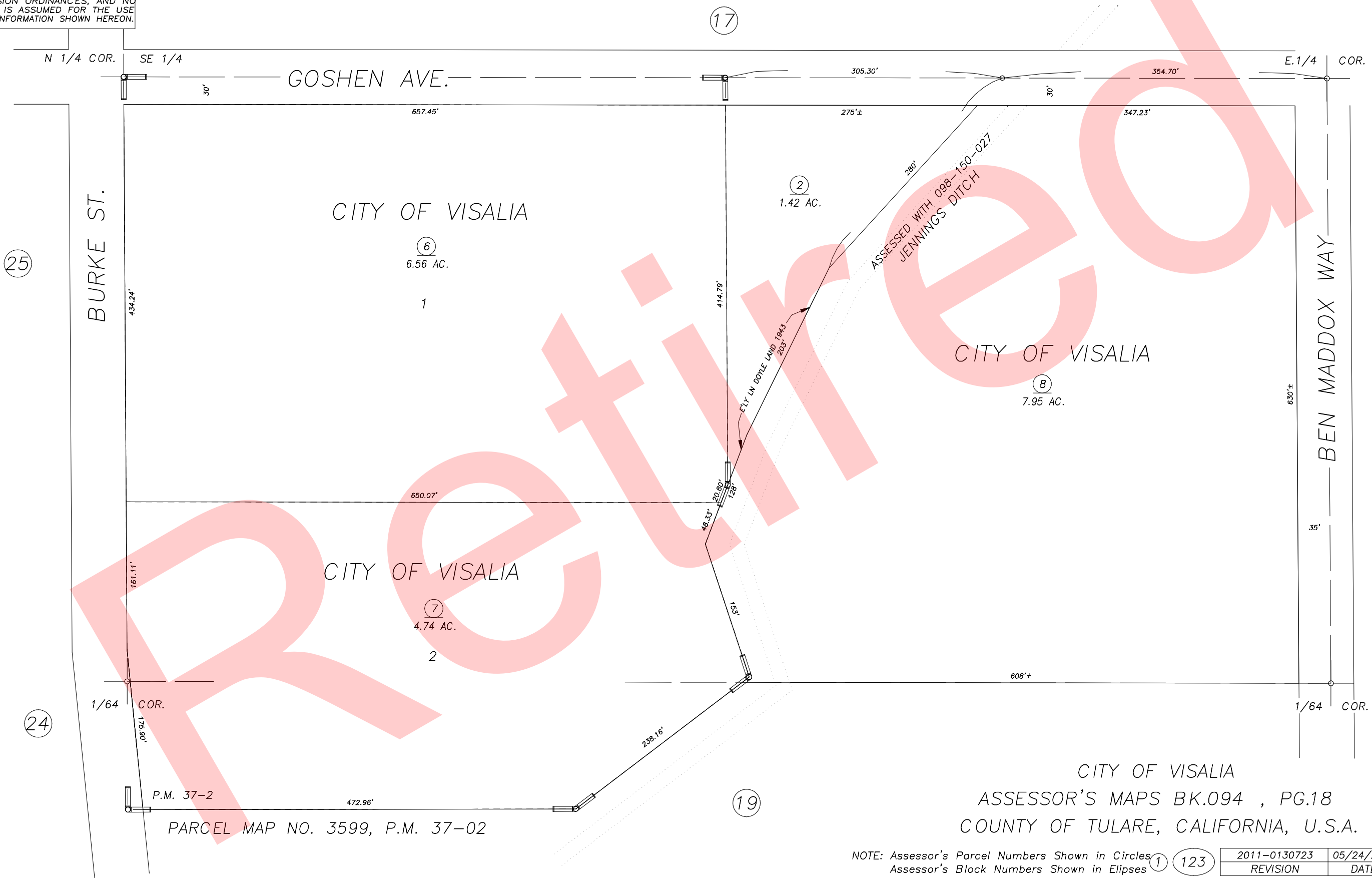


DISCLAIMER
 THIS MAP WAS PREPARED FOR LOCAL PROPERTY ASSESSMENT PURPOSES ONLY AND THE PARCELS SHOWN HEREON MAY NOT COMPLY WITH STATE AND LOCAL SUBDIVISION ORDINANCES, AND NO LIABILITY IS ASSUMED FOR THE USE OF THE INFORMATION SHOWN HEREON.

N1/2 OF NE1/4 OF SE1/4 SEC. 29, T.18S., R.25E., M.D.B.&M.

Tax Area Code 094-18
 006-096



CITY OF VISALIA
 ASSESSOR'S MAPS BK.094 , PG.18
 COUNTY OF TULARE, CALIFORNIA, U.S.A.

NOTE: Assessor's Parcel Numbers Shown in Circles ① 123
 Assessor's Block Numbers Shown in Elipses (1) (123)

2011-0130723	05/24/2012	JLC
REVISION	DATE	TECH