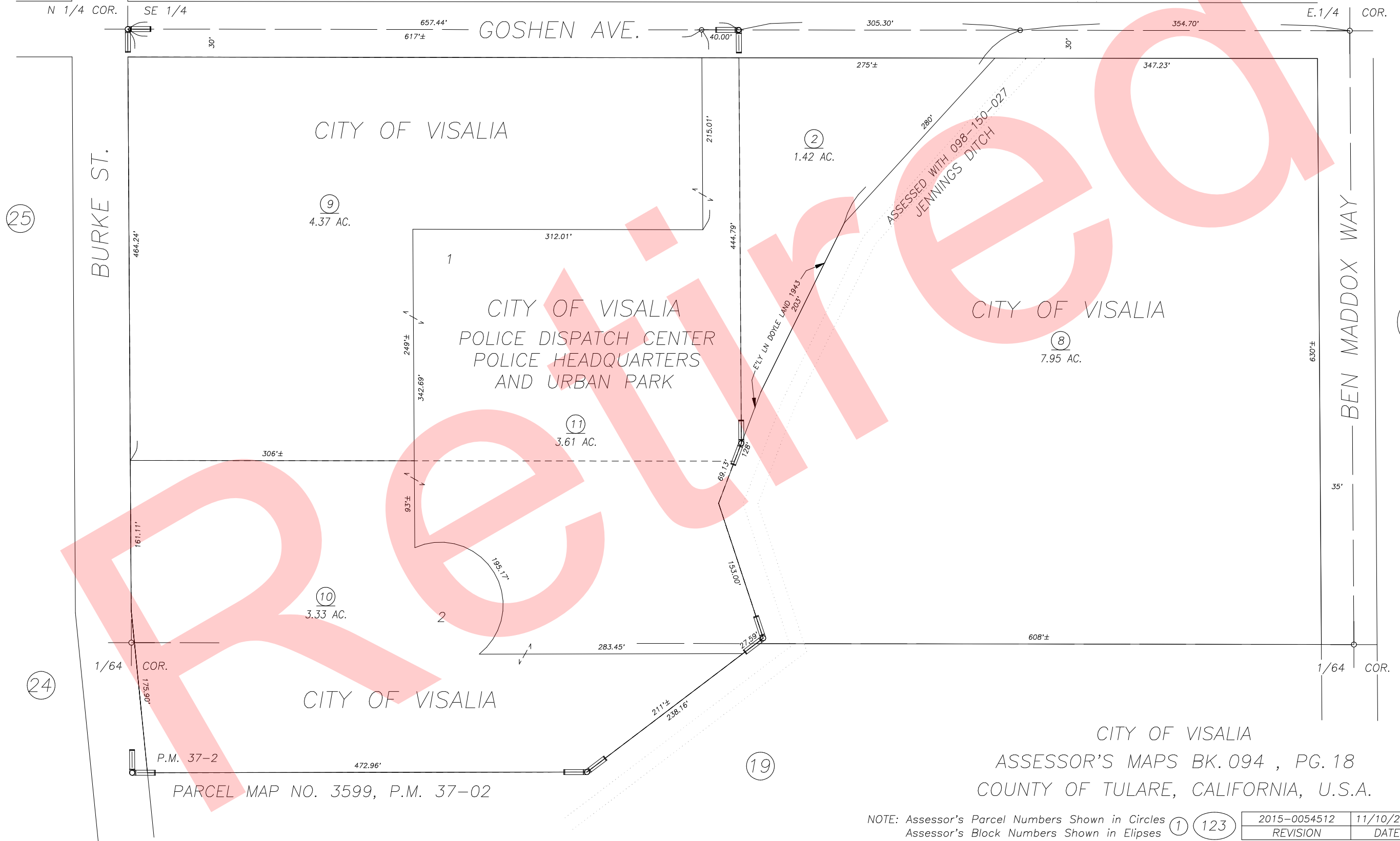
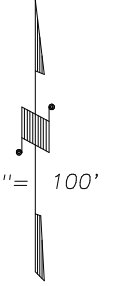


N1/2 OF NE1/4 OF SE1/4 SEC. 29, T.18S., R.25E., M.D.B.&M.

Tax Area Code 094-18  
006-096

**DISCLAIMER**  
THIS MAP WAS PREPARED FOR LOCAL  
PROPERTY ASSESSMENT PURPOSES ONLY  
AND THE PARCELS SHOWN HEREON MAY  
NOT COMPLY WITH STATE AND LOCAL  
SUBDIVISION ORDINANCES, AND NO  
LIABILITY IS ASSUMED FOR THE USE  
OF THE INFORMATION SHOWN HEREON.  
R & T CODE SEC. 327, 408.3, ETC.



PARCEL MAP NO. 3599, P.M. 37-02

CITY OF VISALIA  
ASSESSOR'S MAPS BK. 094 , PG. 18  
COUNTY OF TULARE, CALIFORNIA, U.S.A.

NOTE: Assessor's Parcel Numbers Shown in Circles  
Assessor's Block Numbers Shown in Ellipses

1	123	2015-0054512	11/10/2015	ARL
		REVISION	DATE	TECH