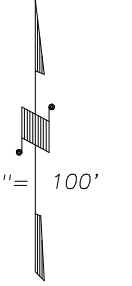
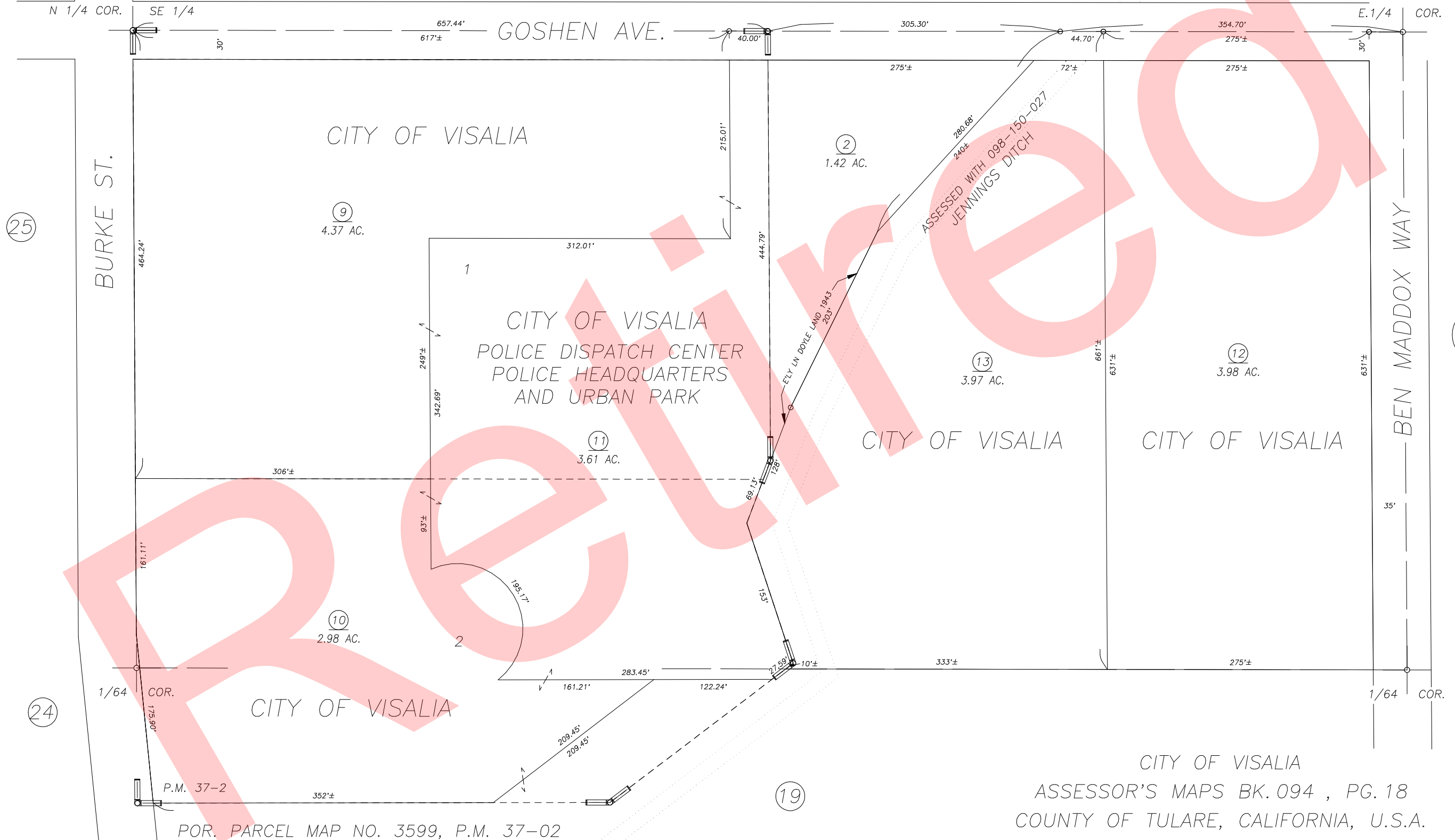


**DISCLAIMER**  
THIS MAP WAS PREPARED FOR LOCAL  
PROPERTY ASSESSMENT PURPOSES ONLY  
AND THE PARCELS SHOWN HEREON MAY  
NOT COMPLY WITH STATE AND LOCAL  
SUBDIVISION ORDINANCES, AND NO  
LIABILITY IS ASSUMED FOR THE USE  
OF THE INFORMATION SHOWN HEREON.  
R & T CODE SEC. 327, 408.3, ETC.



1" = 100'



CITY OF VISALIA  
ASSESSOR'S MAPS BK. 094 , PG. 18  
COUNTY OF TULARE, CALIFORNIA, U.S.A.

NOTE: Assessor's Parcel Numbers Shown in Circles  
Assessor's Block Numbers Shown in Ellipses

2016-0008754	04/07/2016	ARL
REVISION	DATE	TECH

1 123