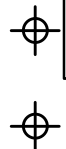


DISCLAIMER
THIS MAP WAS PREPARED FOR LOCAL PROPERTY ASSESSMENT PURPOSES ONLY AND THE PARCELS SHOWN HEREON MAY NOT COMPLY WITH STATE AND LOCAL SUBDIVISION ORDINANCES, AND NO LIABILITY IS ASSUMED FOR THE USE OF THE INFORMATION SHOWN HEREON. R & T CODE SEC. 327, 408.3, ETC.



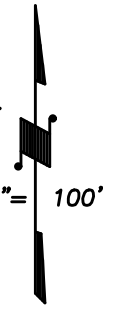
SCHOOL ST.

1/64 COR.

18

POINT LOC. 661' S. & 25' E. OF NE COR. OF SE/4

1/64 COR.



BASIS OF BEARINGS: L.S. 20-17

BURKE ST.

CITY OF VISALIA

POR. 2

CITY OF VISALIA

P.M. 37-02

ASSESSED WITH 098-150-027
JENNINGS DITCH

20
4.95 AC.

CITY OF VISALIA

17
4.47 AC.

24

MILL CREEK

U.P.R.R.

POR SBE 897-54-24AL

CITY OF VISALIA

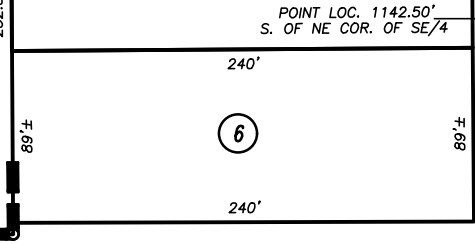
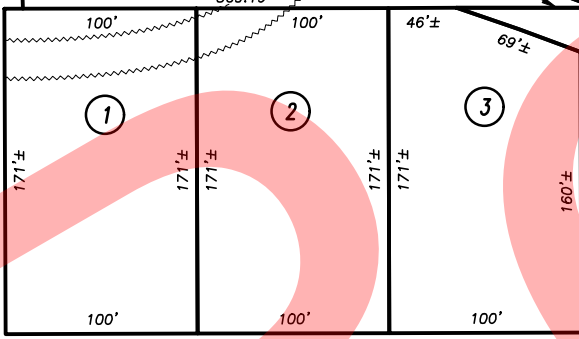
CITY OF VISALIA

LN. PARALLEL & 126.06 S. OF E'LY PROLONG. C/L OAK ST.

CITY OF VISALIA

POR SBE 872-54-24J-33

5
1.34 AC.



E. CENTER ST.

L.S. 16-96

CTR. SE 1/4

20

E. 1/4 COR. SE 1/4

BEN MADDOX WAY

Bk. 098

POR. PARCEL MAP NO. 3599, P.M. 37-02
RECORD OF SURVEY, L.S. 16-96

CITY OF VISALIA
ASSESSOR'S MAPS BK. 094 , PG. 19
COUNTY OF TULARE, CALIFORNIA, U.S.A.