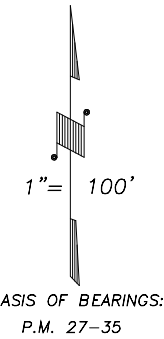
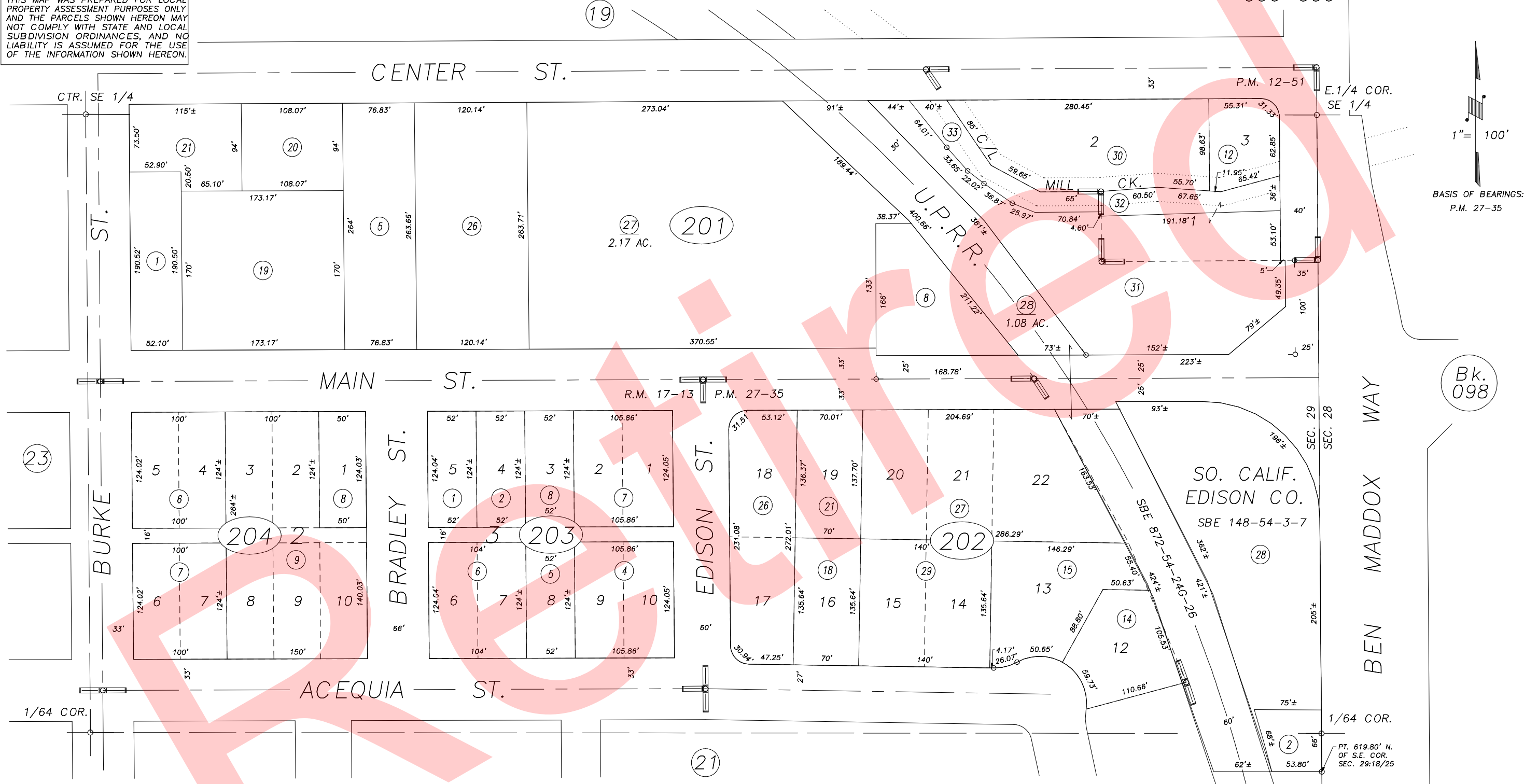


N1/2 OF SE1/4 OF SE1/4 SEC.29, T.18S., R.25E., M.D.B.&M.

Tax Area Codes 094-20

**DISCLAIMER**  
 THIS MAP WAS PREPARED FOR LOCAL PROPERTY ASSESSMENT PURPOSES ONLY AND THE PARCELS SHOWN HEREON MAY NOT COMPLY WITH STATE AND LOCAL SUBDIVISION ORDINANCES, AND NO LIABILITY IS ASSUMED FOR THE USE OF THE INFORMATION SHOWN HEREON.

006-096



POR. R. E. HYDE E. MAIN ST. TRACT, R.M. 17-13  
 PARCEL MAP NO. 1150, P.M. 12-51  
 POR. PARCEL MAP NO. 2634, P.M. 27-35

ASSESSOR'S MAPS BK.094 , PG20  
 COUNTY OF TULARE, CALIFORNIA, U.S.A.

NOTE: Assessor's Parcel Numbers Shown in Circles 1 123 Assessor's Block Numbers Shown in Elipses

ADJ. TARGET AREA	05/24/2012	JLC
REVISION	DATE	TECH