

**DISCLAIMER**

THIS MAP WAS PREPARED FOR LOCAL PROPERTY ASSESSMENT PURPOSES ONLY. THE PARCELS SHOWN HEREON MAY NOT COMPLY WITH STATE AND LOCAL SUBDIVISION ORDINANCES. NO LIABILITY IS ASSUMED FOR THE USE OF THE INFORMATION HEREON.

REVISED: 08/28/2013  
REASON: 2012-0037763  
CAD TECH: CMB

S.1/2 OF SW.1/4 OF SE.1/4 SEC.29, T.18S., R.25E., M.D.B.&M.

TAX CODE AREA  
006-096  
006-217

094-22

LIBERTY ST.

23

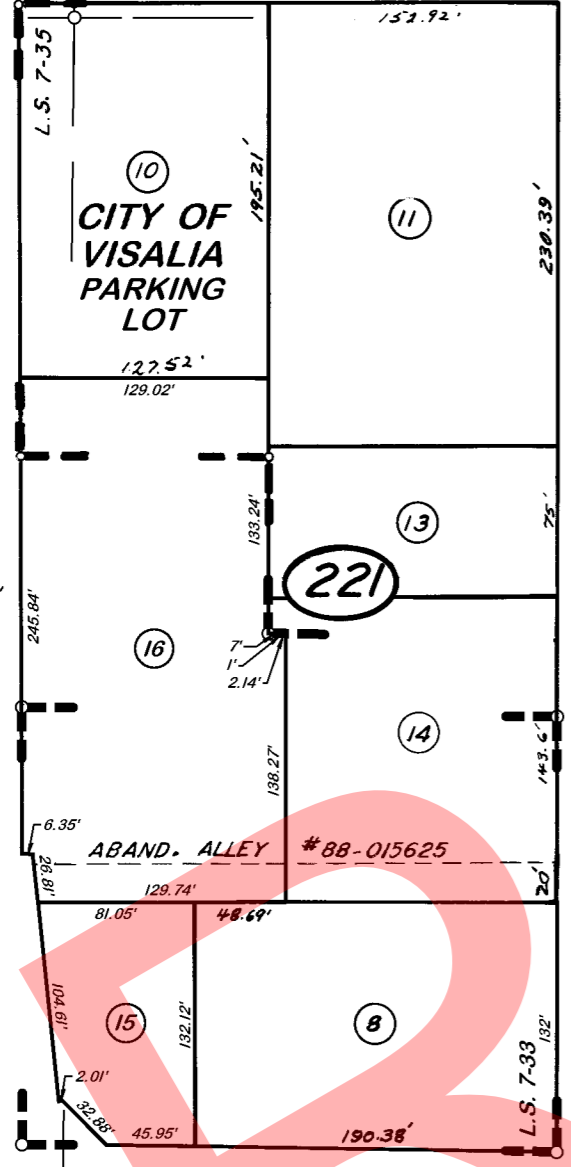
CLARK ST.

ACEQUIA ST.

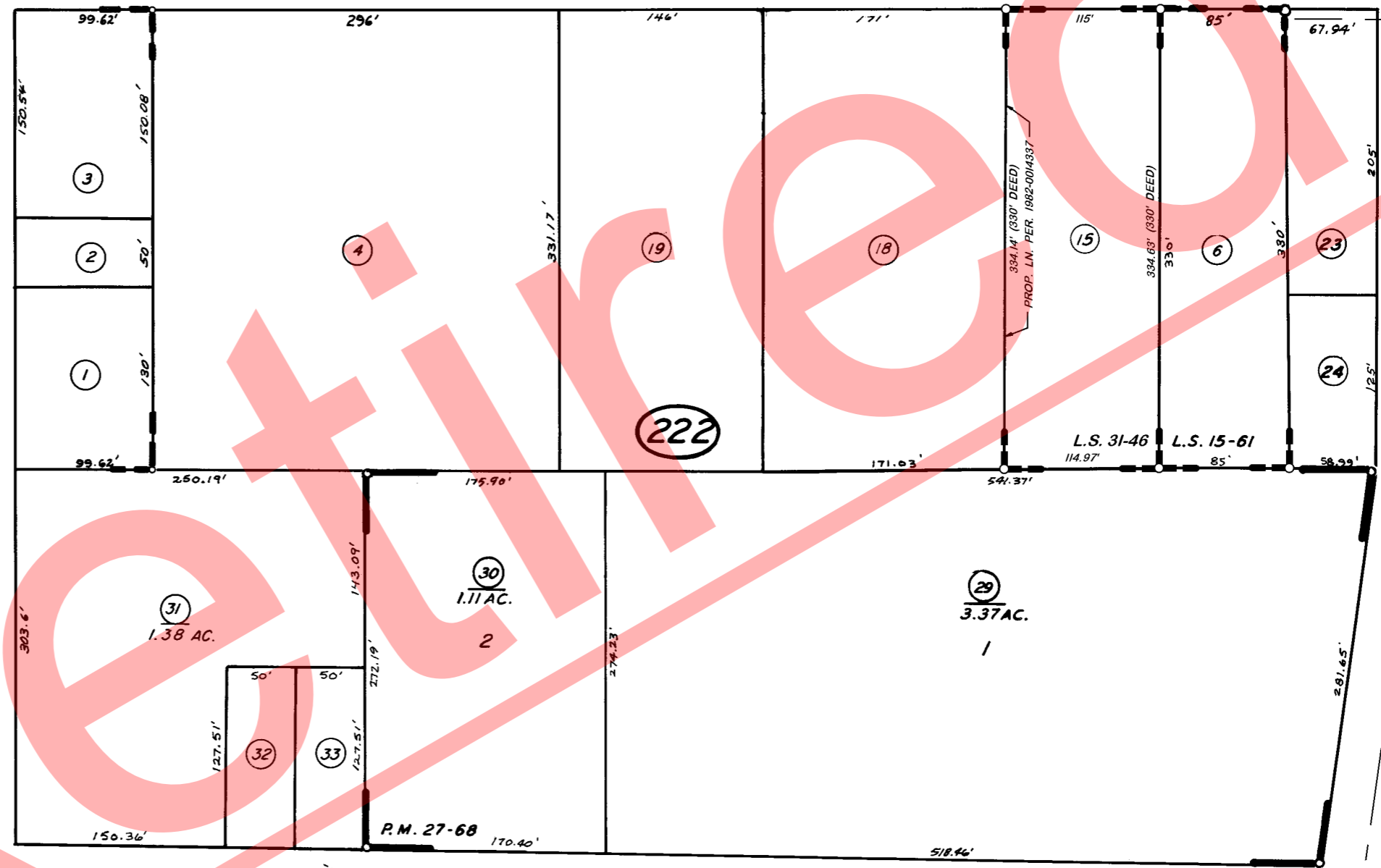
1/64 COR.

1/64 COR.

(EAST ST.)



TIPTON ST.



BURKE ST.

WILLOW ST.

30

21

SANTA FE AVE.

MINERAL KING AVE.

S.1/4 COR.

S.1/4 COR. SE.1/4

SEC. 29  
SEC. 32

RECORD OF SURVEY, L.S. 7-33  
RECORD OF SURVEY, L.S. 7-35  
PARCEL MAP NO. 2667, P.M. 27-68  
RECORD OF SURVEY, L.S. 15-61  
RECORD OF SURVEY, L.S. 31-46

Bk. 097

CITY OF VISALIA  
ASSESSOR'S MAPS BK. 094, PG. 22.  
COUNTY OF TULARE, CALIF.

NOTE: Assessor's Parcel Numbers Shown in Circles  
Assessor's Block Numbers Shown in Ellipses

