

POR. NW 1/4 OF SE 1/4 SEC. 29, T.18S., R.25E., M. D. B. & M.

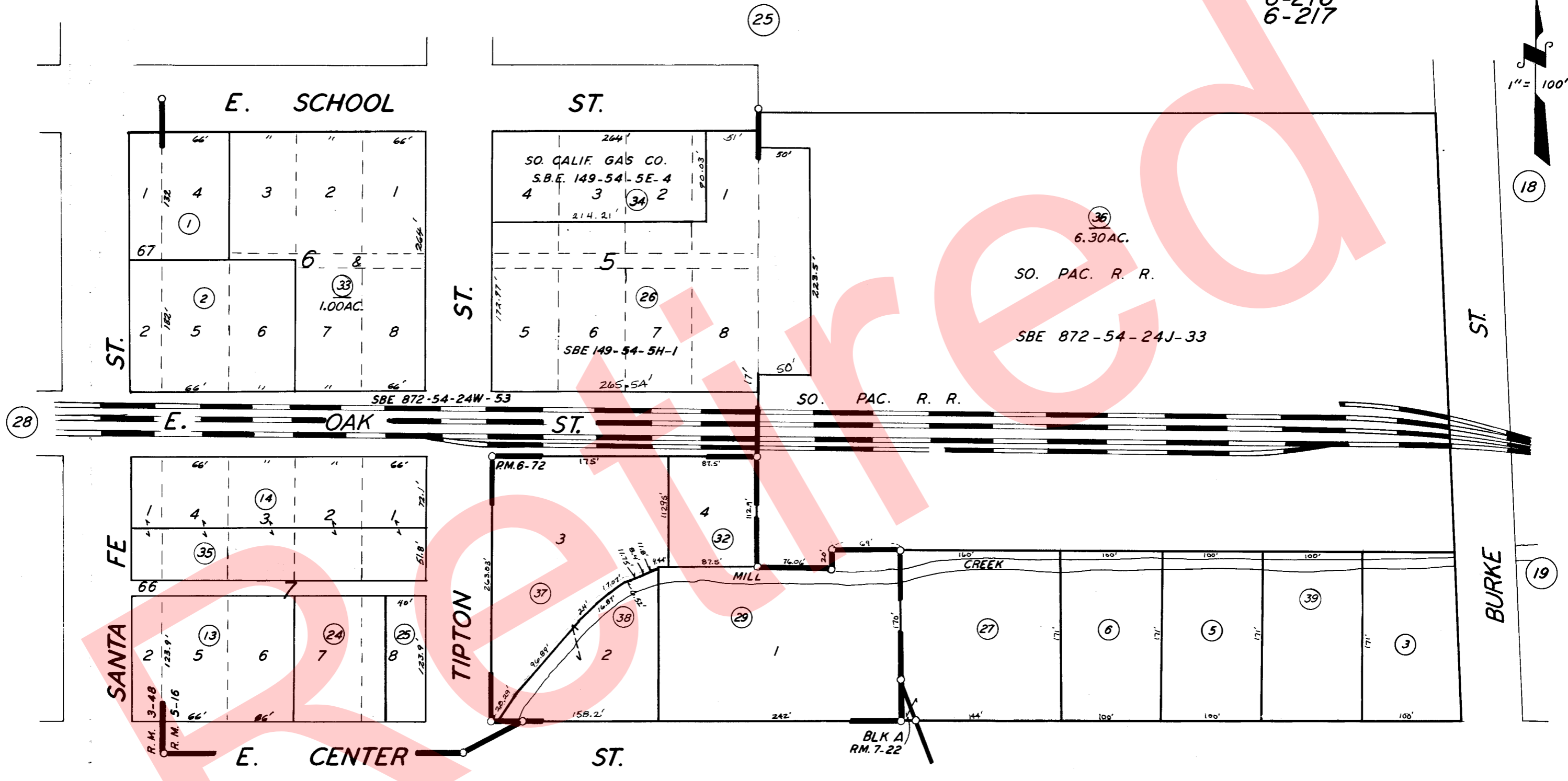
TAX CODE AREA

94-24

6-096

6-216

6-217



PARCEL MAP 572, P.M. 6-72
 POR. ORIG. TOWNSITE R. M. 3-48.
 POR. BROWN'S ADD. R. M. 7-22.
 POR. DROUILLARDS ADD. R. M. 5-16.

CITY OF VISALIA
 ASSESSOR'S MAPS BK. 94, PG. 24.
 COUNTY OF TULARE, CALIF.

NOTE — ASSESSOR'S BLOCK NUMBERS SHOWN IN ELLIPSES
 ASSESSOR'S PARCEL NUMBERS SHOWN IN CIRCLES