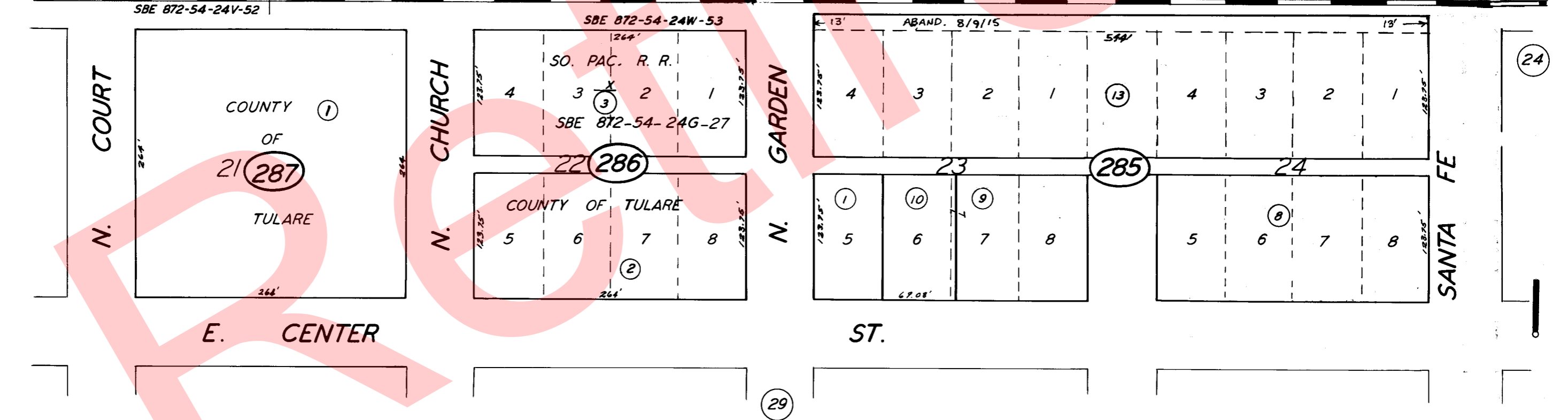
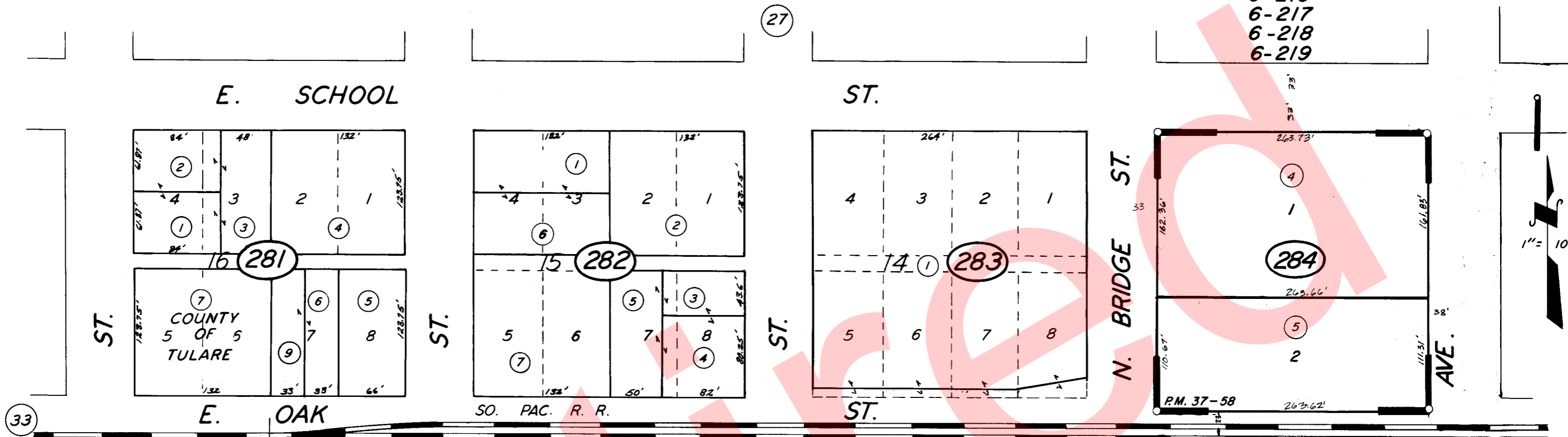


POR. NE 1/4 OF SW 1/4 SEC. 29, T.18S., R.25E., M. D. B. & M.

TAX CODE AREA 94-28
6-216
6-217
6-218
6-219



POR. ORIG. TOWNSITE R. M. 3-48.
PARCEL MAP 3655, P. M. 37-58

CITY OF VISALIA
ASSESSOR'S MAPS BK. 94, PG. 28.
COUNTY OF TULARE, CALIF.

NOTE — ASSESSOR'S BLOCK NUMBERS SHOWN IN ELLIPSES
ASSESSOR'S PARCEL NUMBERS SHOWN IN CIRCLES

