

N1/2 OF NE1/4 OF SW1/4 SEC.29, T.18R., R.25E., M.D.B.&M.

Tax Area Codes 094-28

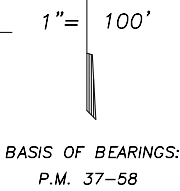
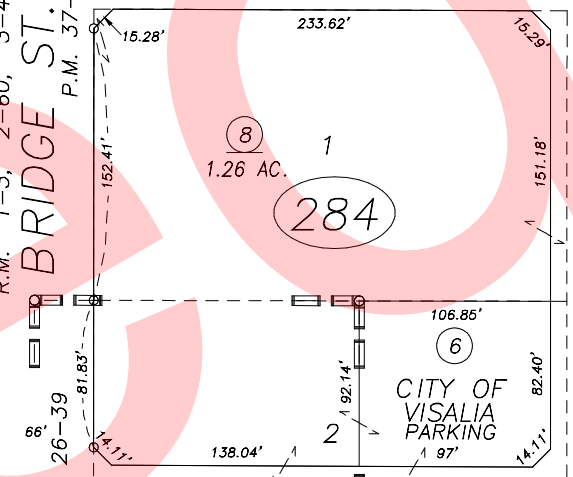
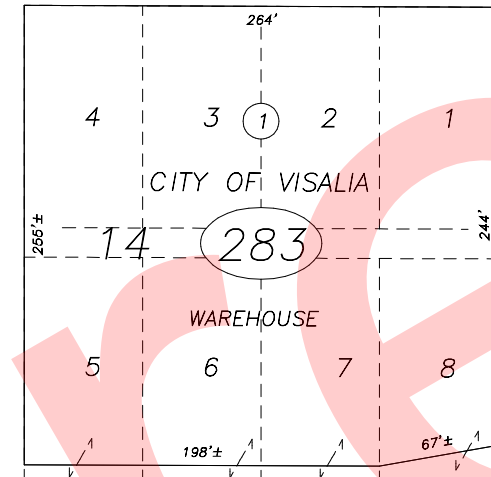
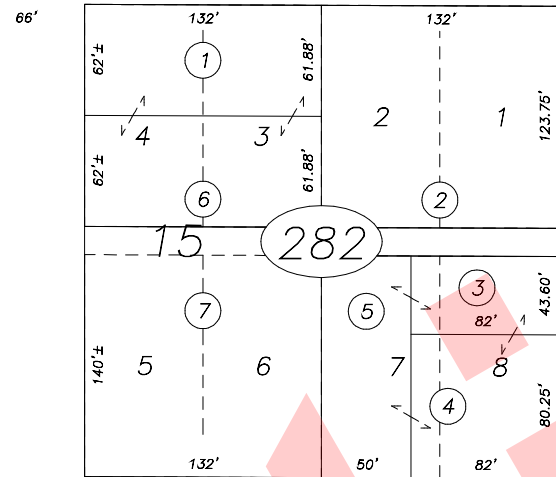
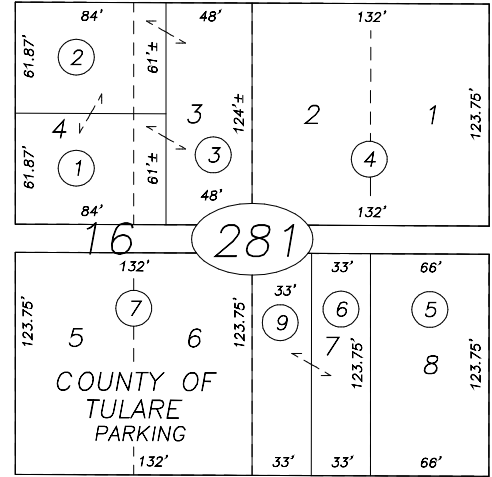
DISCLAIMER
THIS MAP WAS PREPARED FOR LOCAL PROPERTY ASSESSMENT PURPOSES ONLY AND THE PARCELS SHOWN HEREON MAY NOT COMPLY WITH STATE AND LOCAL SUBDIVISION ORDINANCES, AND NO LIABILITY IS ASSUMED FOR THE USE OF THE INFORMATION SHOWN HEREON.

006-216
006-217
006-218
006-219

27

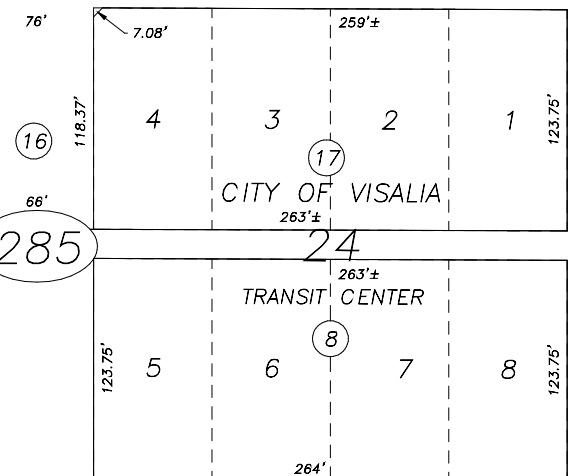
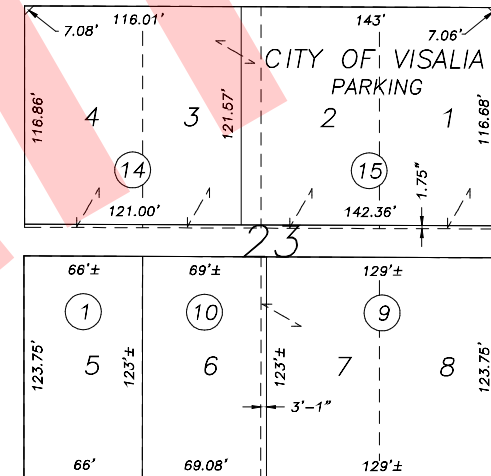
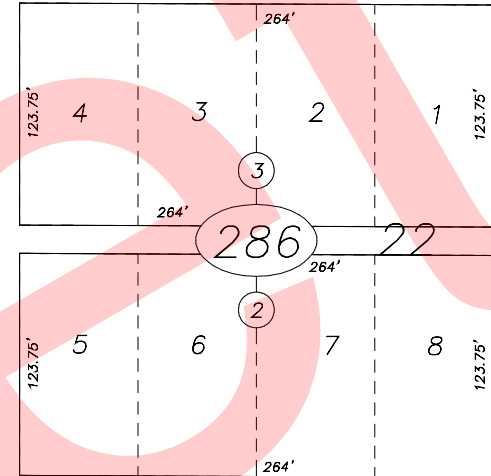
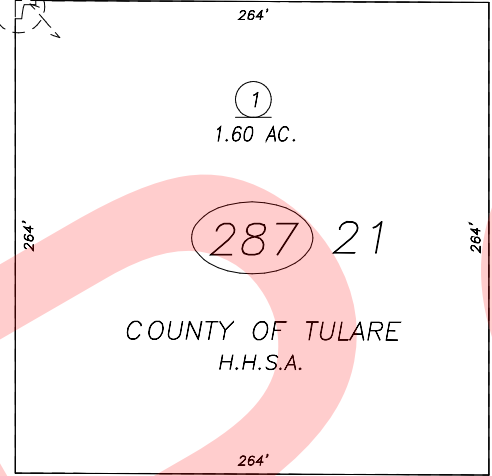
SCHOOL AVE.

STATE HWY. 63



33

OAK ST.



24

CENTER AVE.

POR. PLAT OF VISALIA, R.M. 1-3, 2-60, 3-48
PARCEL MAP 3655, P.M. 37-58
RECORD OF SURVEY, L.S. 26-39

29

CITY OF VISALIA
ASSESSOR'S MAPS BK.094 , PG28
COUNTY OF TULARE, CALIFORNIA, U.S.A.

NOTE: Assessor's Parcel Numbers Shown in Circles (1) (123)
Assessor's Block Numbers Shown in Elipses (281) (282) (283) (284) (285) (286) (287)

2012-0041274	05/14/2013	ASG
REVISION	DATE	TECH

