

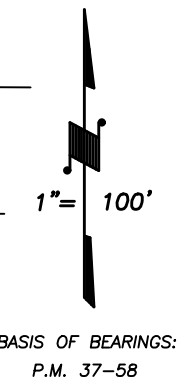
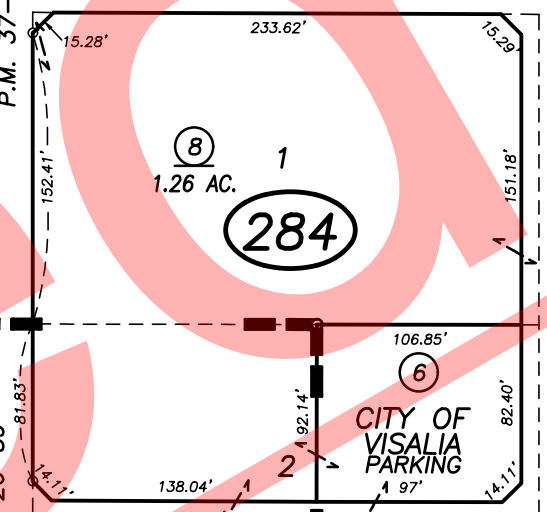
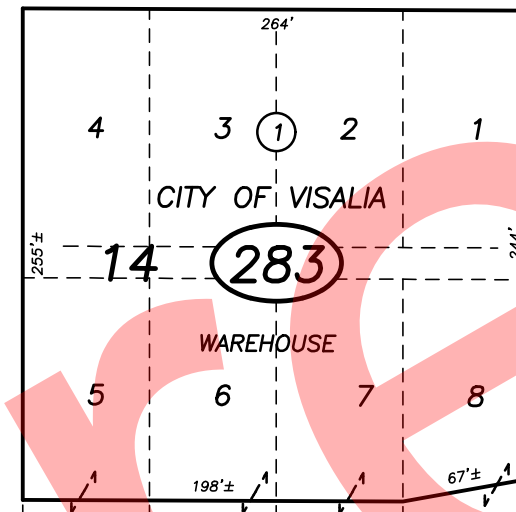
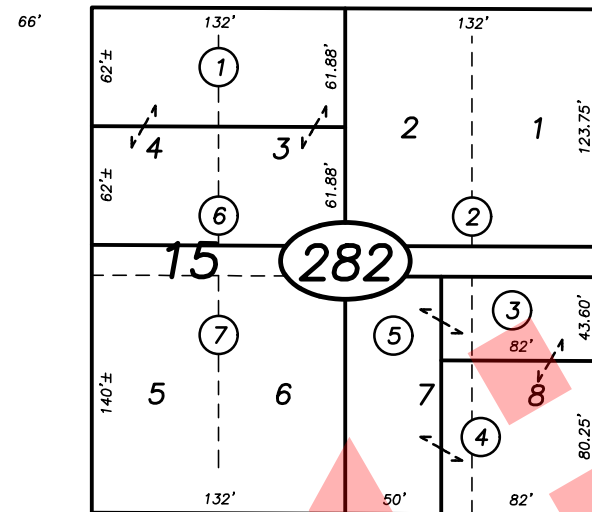
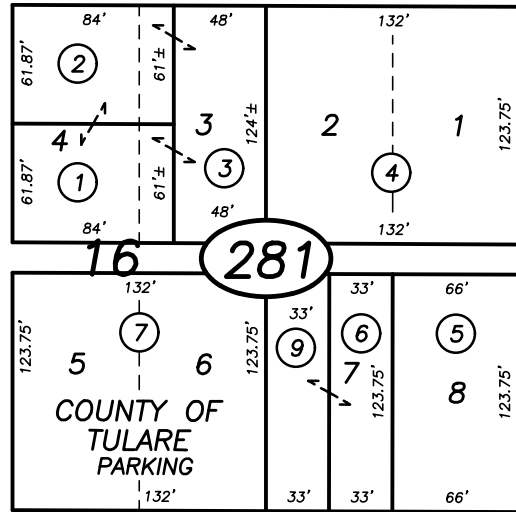
DISCLAIMER

THIS MAP WAS PREPARED FOR LOCAL PROPERTY ASSESSMENT PURPOSES ONLY AND THE PARCELS SHOWN HEREON MAY NOT COMPLY WITH STATE AND LOCAL SUBDIVISION ORDINANCES, AND NO LIABILITY IS ASSUMED FOR THE USE OF THE INFORMATION SHOWN HEREON.

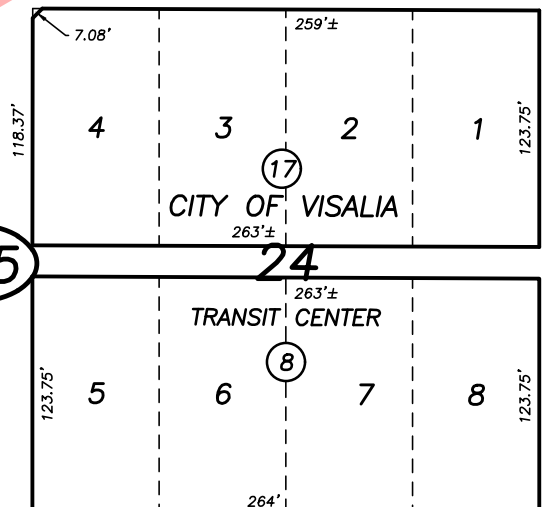
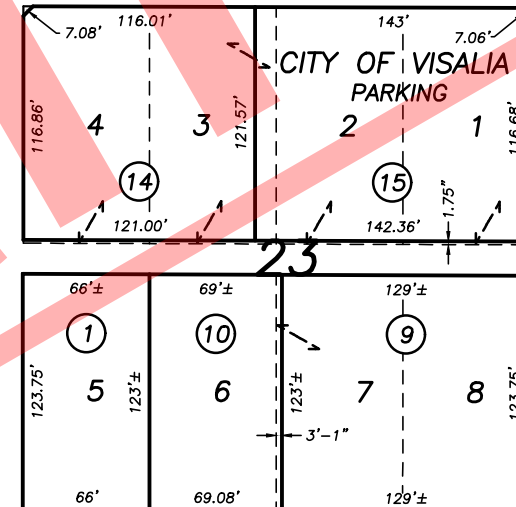
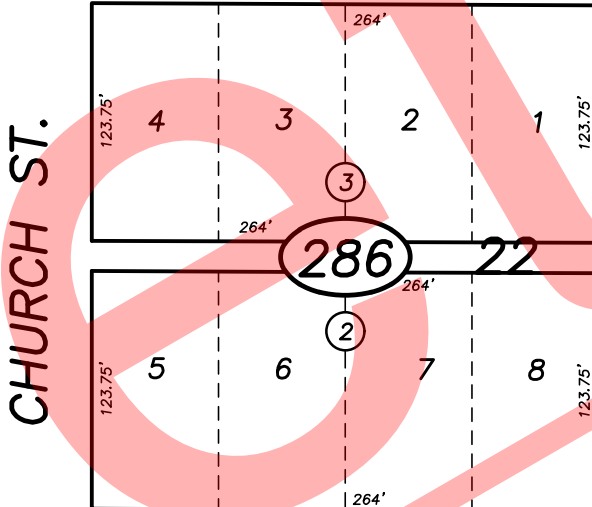
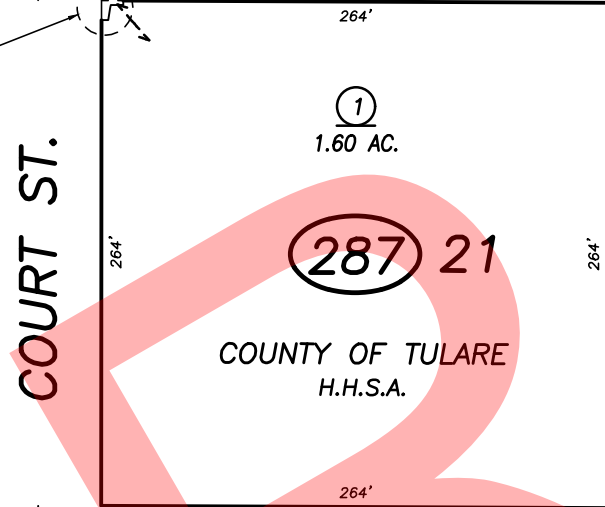
006-216
006-217
006-218
006-219

SCHOOL AVE.

STATE HWY. 63



OAK ST.



CENTER AVE.

POR. PLAT OF VISALIA, R.M. 1-3, 2-60, 3-48
PARCEL MAP 3655, P.M. 37-58
RECORD OF SURVEY, L.S. 26-39

CITY OF VISALIA
ASSESSOR'S MAPS BK. 094 , PG. 28
COUNTY OF TULARE, CALIFORNIA, U.S.A.

NOTE: Assessor's Parcel Numbers Shown in Circles
Assessor's Block Numbers Shown in Elipses

2013-1-REVIEW	11/12/2013	LLB
REVISION	DATE	TECH

