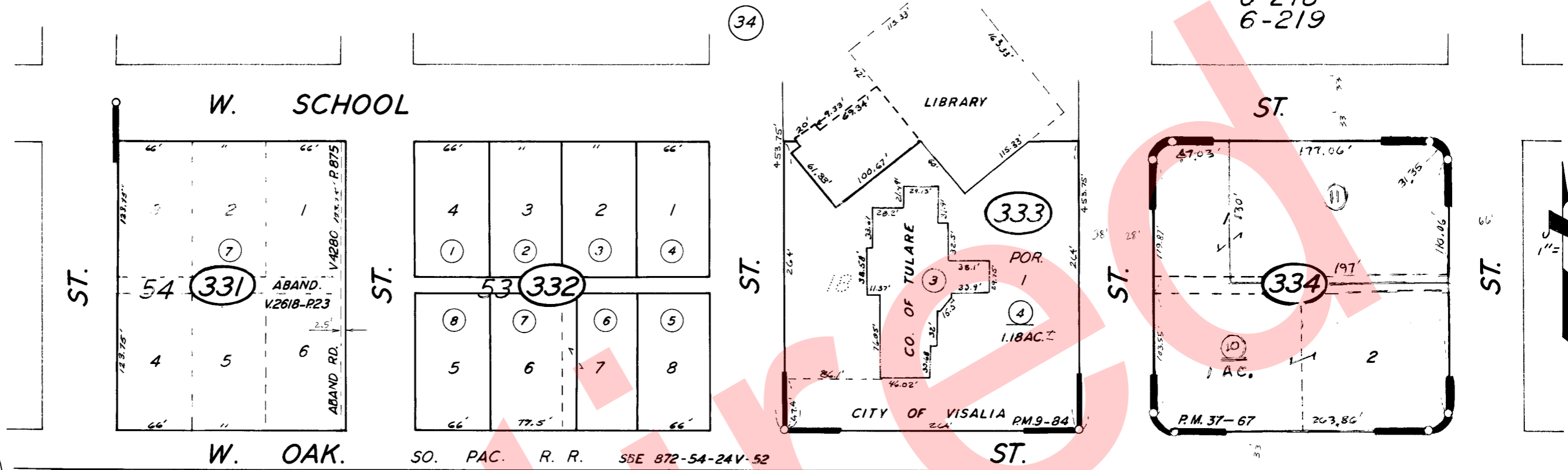


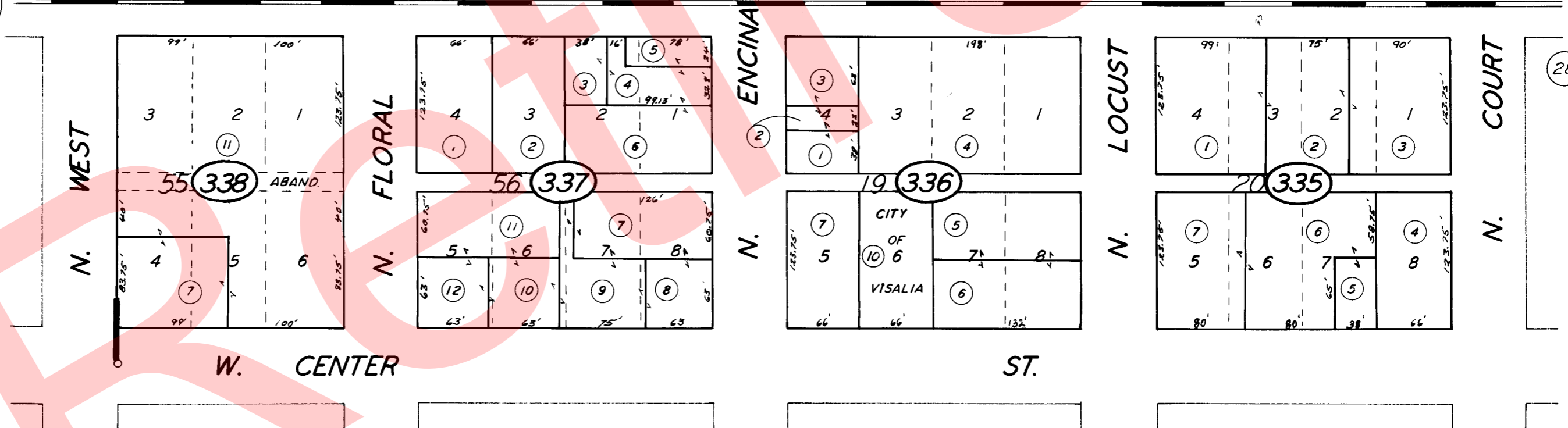
POR. NW 1/4 OF SW 1/4 SEC. 29, T.18S., R.25E., M. D. B. & M.

TAX CODE AREA 94-33

6-218
6-219



BK. 93



POR. PARCEL MAP 883, P.M. 9-84

POR. OF ORIG. TOWNSITE R. M. 3-48.
PARCEL MAP 3664, P.M. 37-67

CITY OF VISALIA

ASSESSOR'S MAPS BK. 94, PG. 33.

COUNTY OF TULARE, CALIF.

NOTE -- ASSESSOR'S BLOCK NUMBERS SHOWN IN ELLIPSES
ASSESSOR'S PARCEL NUMBERS SHOWN IN CIRCLES

